

# User Manual Bridge-M (EN)



Smart Home Bridge

User Manual V1.0

## Introduction

**Bridge Max (Bridge-M)** is a multi-functional bridge device designed to add and manage smart devices using various protocols.

Serving as a central hub for device access and integration, Bridge Max supports bridging Zigbee devices, Bluetooth devices (eWeLink-Remote devices, BTHome devices), eWeLink account devices, and Home Assistant entities to third-party Matter platforms via Matter Bridge functionality, enabling unified control of home devices across Matter ecosystems.

Additionally, Bridge Max can bridge itself and its added Zigbee devices to Home Assistant via MQTT.



Matter Bridge



Local Control (Local Web Interface Access, Matter LAN Control)



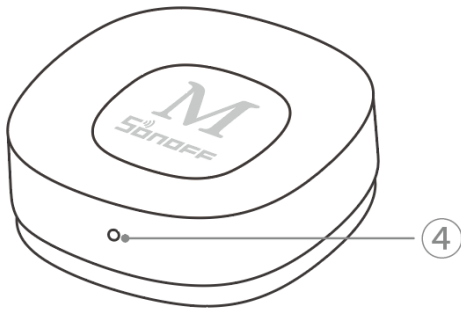
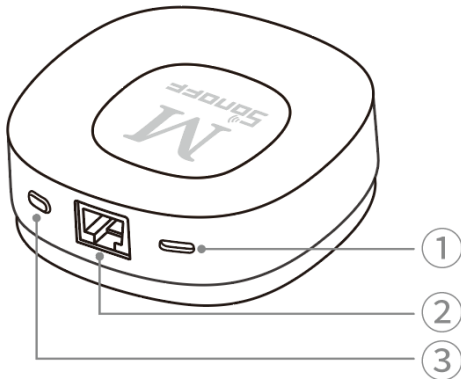
Third-Party Platform Integration



Smart Scenes & Security



Ethernet and Wi-Fi Connection



① Power Interface (Type-C)

② Network Interface (RJ45)

③ Button

- Press and hold for 3s: Enter eWeLink pairing mode (30 minutes)
- Press and hold for 10s: Factory reset
- Single-press: Exit eWeLink pairing mode or cancel bridge speaker alarm
- Double-press: Reset web login password

④ LED Indicator

### LED Indicator Status Guide

Device Current Status	Status Description
Device Running	Solid Yellow: Bridge is starting up
Connecting to eWeLink	Slow Blinking Yellow: eWeLink pairing mode active

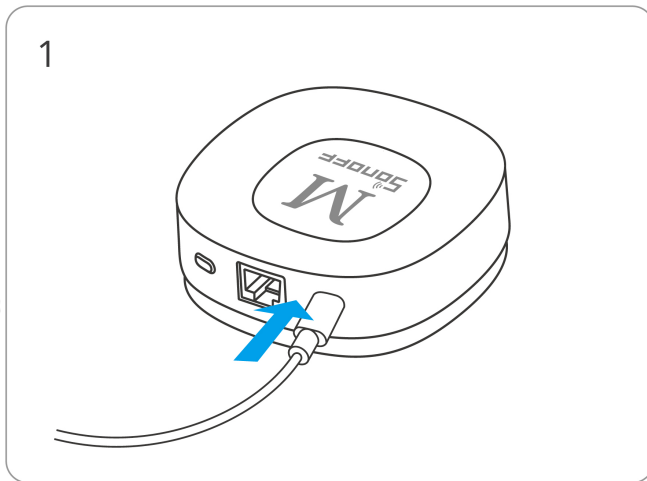
	Solid Green: Successfully paired to eWeLink
<b>Pairing Settings</b>	Fast Blinking Yellow: Pairing Zigbee sub-devices
	Slow Blinking Green: Matter Bridge pairing in progress
<b>Function Settings</b>	Solid Blue: Web interface connected to the bridge
	Fast Blinking Blue: Bridge replacement in progress
	Slow Blinking Blue: Factory reset in progress
	Fast Blinking Blue Twice: Password reset confirmation
<b>Error Status</b>	Fast Blinking Red: Bridge network port and Wi-Fi not connected
	Slow Blinking Red: Not connected to eWeLink cloud and not using the local web interface

## Product Specifications

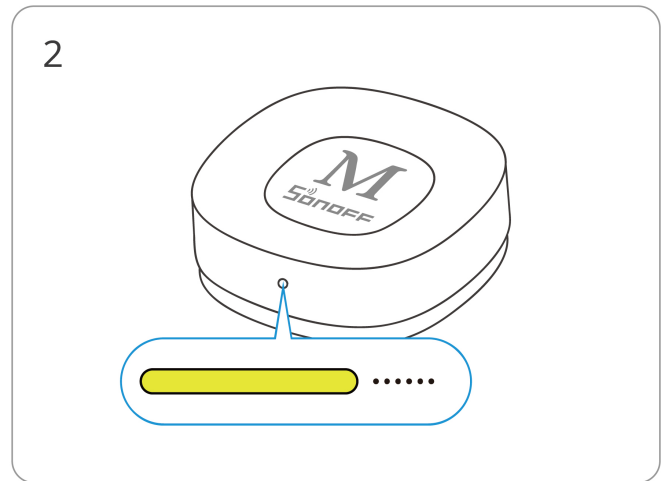
Bridge Max	
Product Series	Bridge Series
Product Name	Smart Home Gateway
Product Model	Bridge-M
MCU	SigmaStar_SSD2351Q + EFR32MG21
Input	5V $\Rightarrow$ 1A
Wi-Fi	IEEE 802.11a/b/g/n/ac/ax
Zigbee	IEEE 802.15.4
Power Interface Type	Type-C
Network Interface Type	RJ45 (10/100Mbps)
Net Weight	83.4g
Product Dimensions	82x82x28mm

Product Color	White
Housing Material	PC+ABS
Applicable Place	Indoor
Operating Temperature	-10°C~40°C
Operating Humidity	5%~95% RH, non-condensing
FCC ID	2APN5-BRIDGEM
Product Certifications	CE/FCC/RoHS

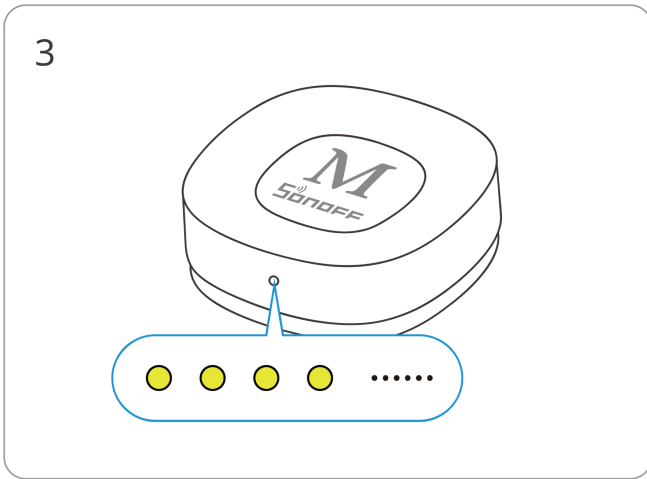
## Power On



Plug in the Type-C power cable.



The LED indicator shows "**Solid Yellow**" status, indicating the bridge is starting up. When you hear a prompt sound from the gateway, the device startup is complete.

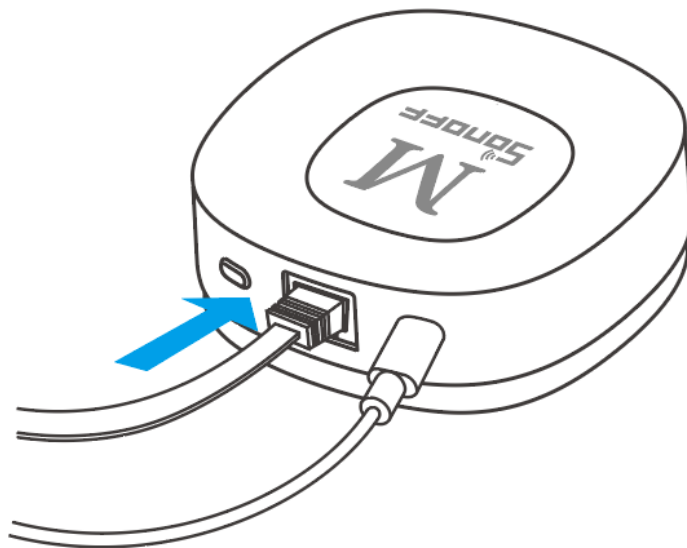


For first-time use, the Bridge Max enters network configuration mode by default. The indicator shows "Slow Blinking Yellow" status.

ⓘ If network configuration is not completed within 30 minutes, the device will exit pairing mode. To re-enter, press and hold the device button for 3 seconds until the LED indicator shows "Slow Blinking Yellow" status.

## Ethernet Connection

Plug in the Ethernet network cable. If you need to use the Wi-Fi connection, you can configure it during eWeLink App pairing.

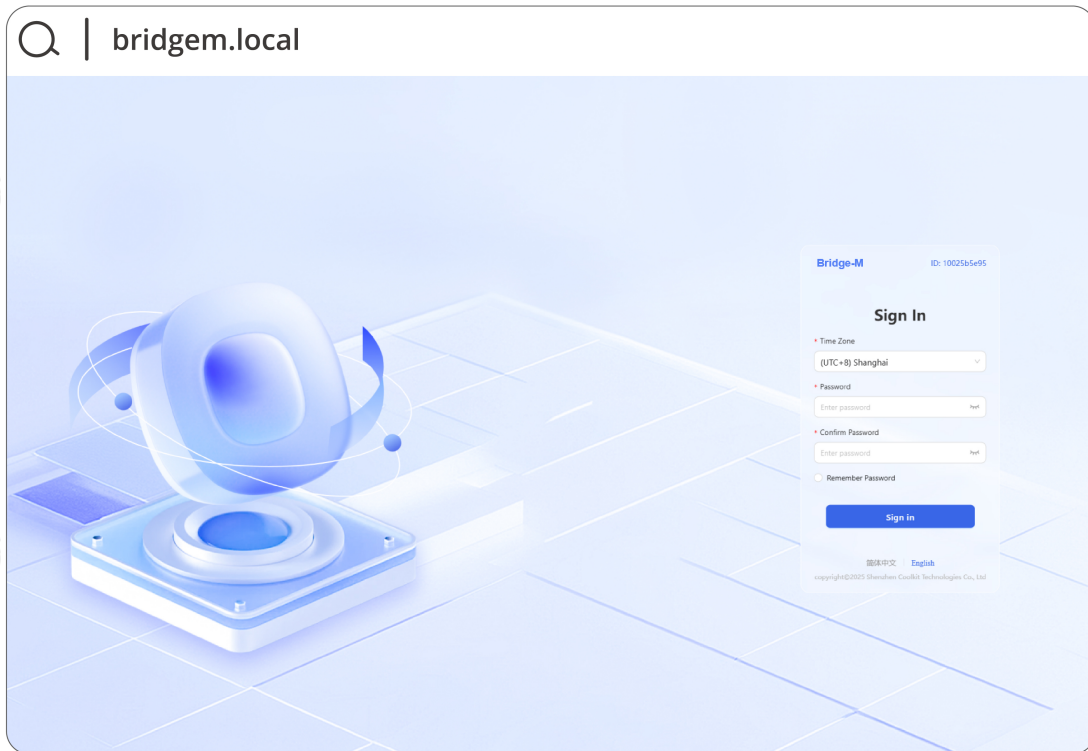


# Usage Methods

## 1. Local Usage

### 1-1. Access Bridge-M Web Console

After powering on Bridge-M and connecting the network cable, enter the URL `bridgem.local` in your browser to access the Web Console. You will need to set a password on first access. Alternatively, try finding the IP address assigned to Bridge-M in your router's settings page and access the Web Console via IP.

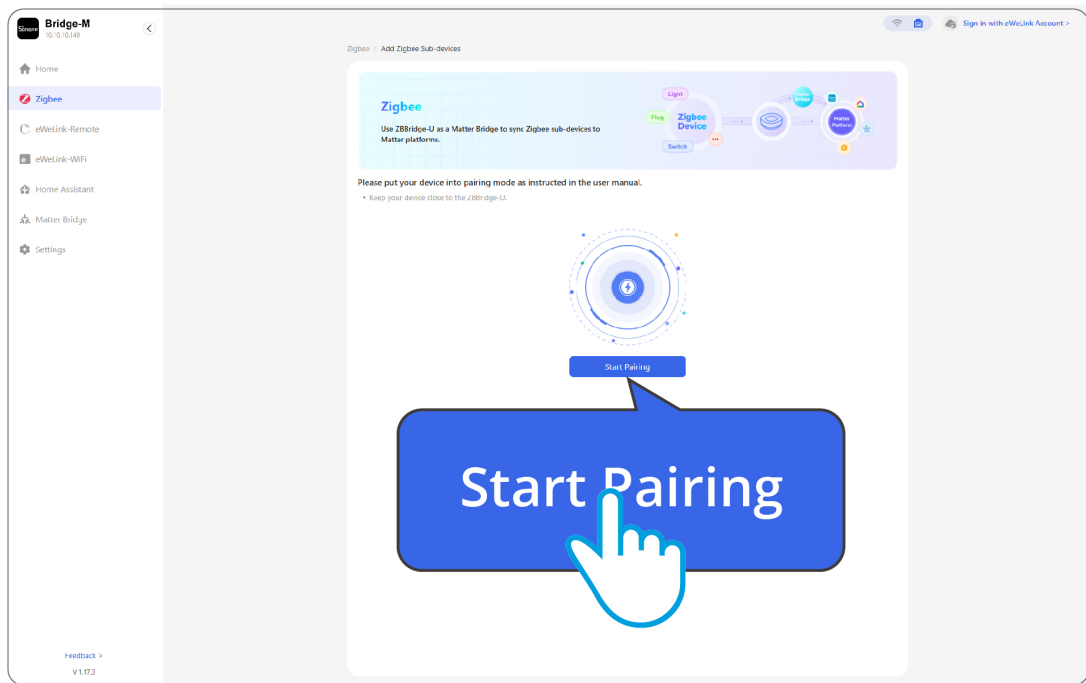
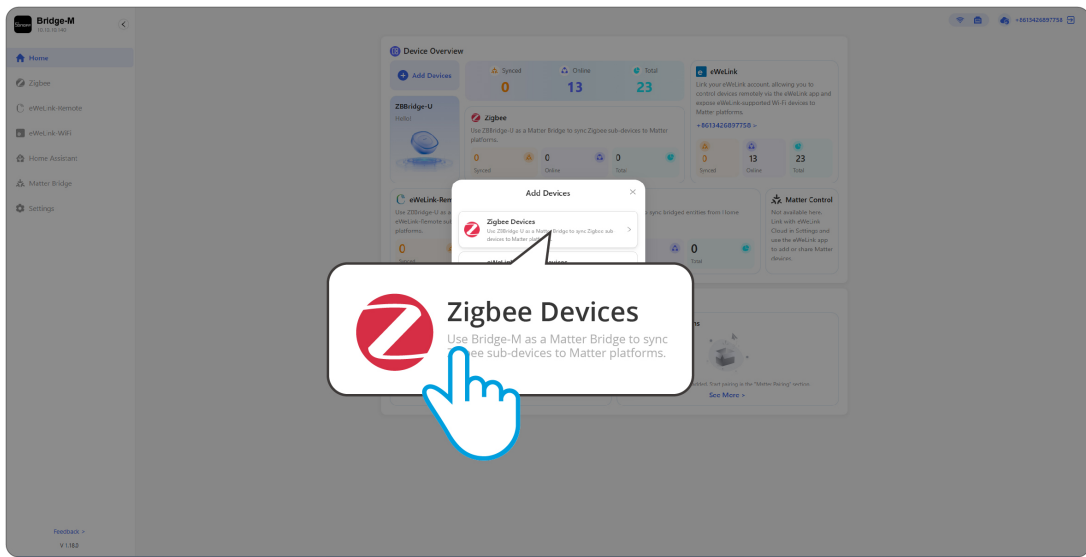
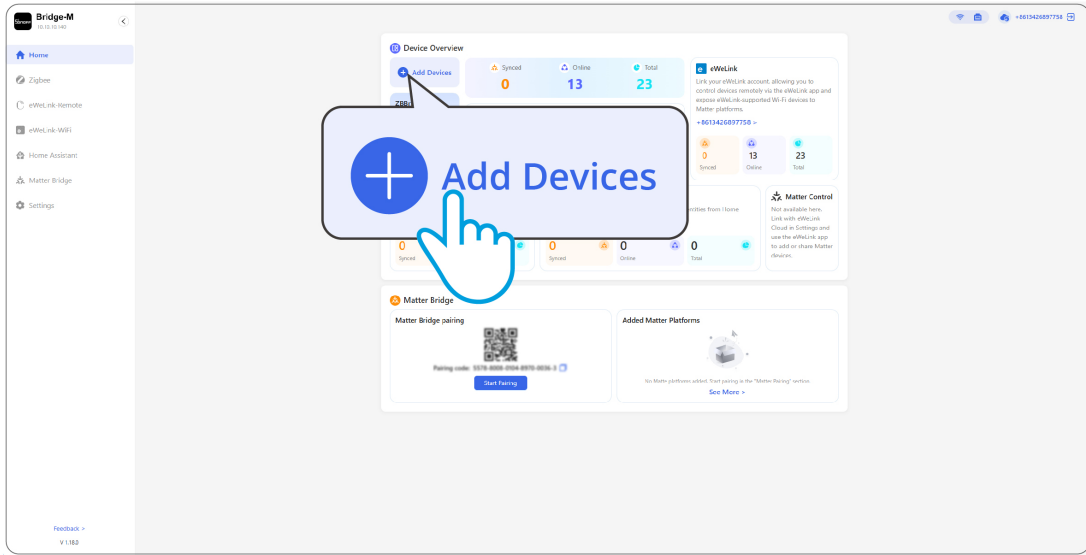


### 1-2. Add Devices

#### 1-2-1. Add Zigbee Devices

First, put the Zigbee device into pairing mode. Click "+ Add Devices" on the web interface and select the "Zigbee Devices" from the pop-up, or click "Start Pairing" in the Zigbee page to add Zigbee devices. (The LED indicator shows fast blinking yellow status.)

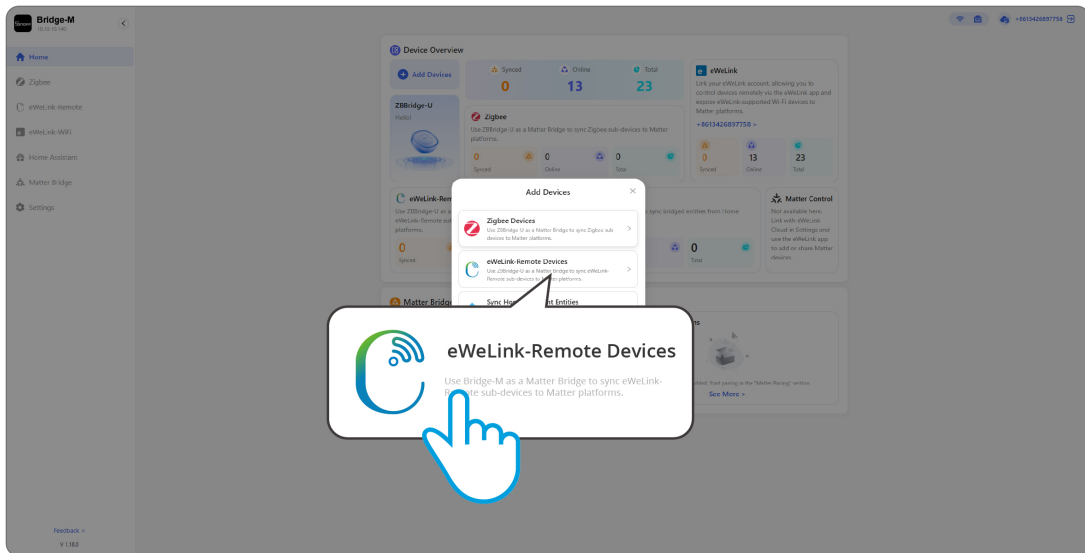
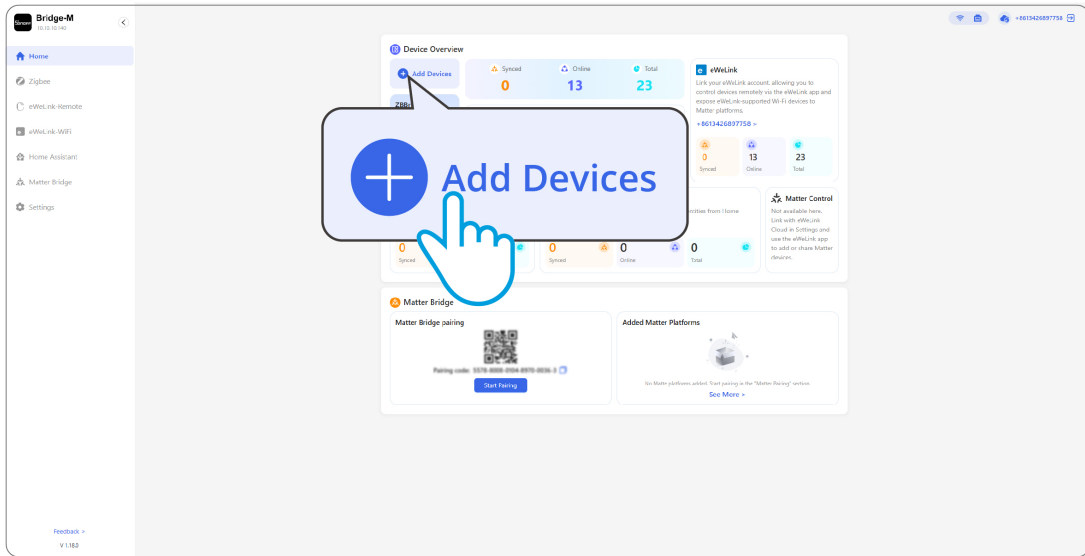
Wait for the search to complete and the Zigbee device will be added.

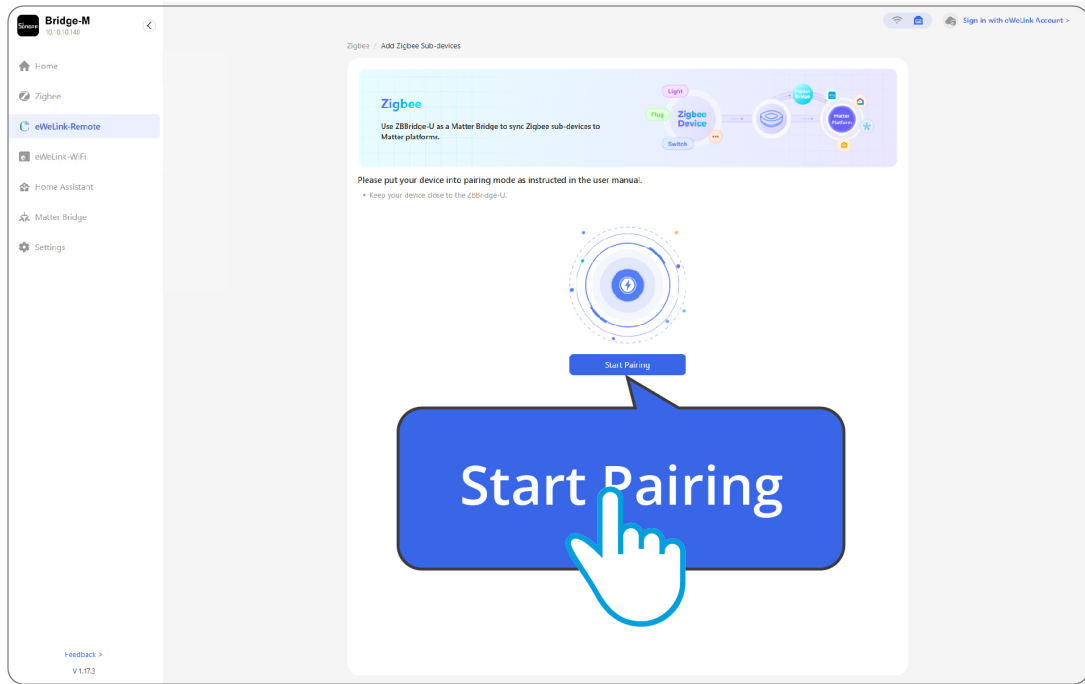


## 1-2-2. Add eWeLink-Remote Devices

Click "+ Add Devices" on the web interface and select the "eWeLink-Remote Devices" option, or click "Start Pairing" in the "eWeLink-Remote" page to add eWeLink-Remote devices.

A maximum of 8 eWeLink-Remote devices can be added.



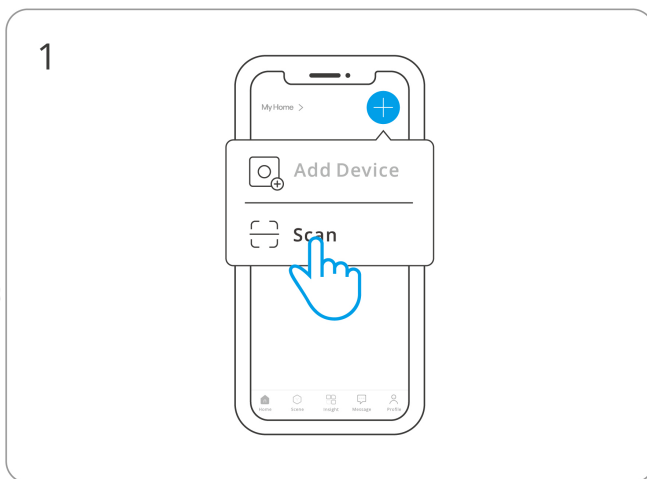


## 2. eWeLink App Usage

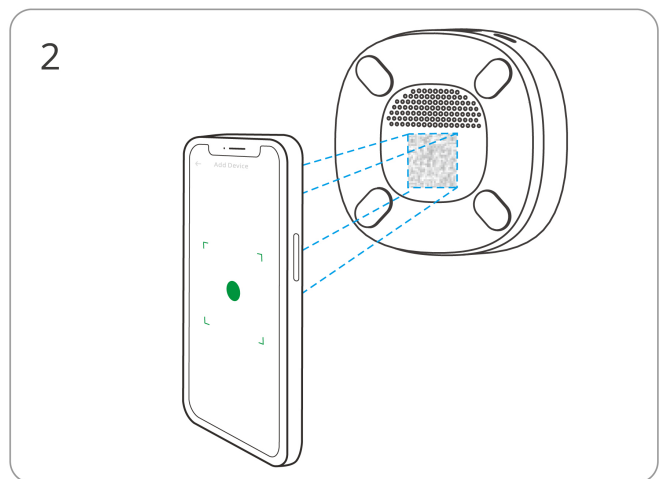
### 2-1. Download eWeLink App



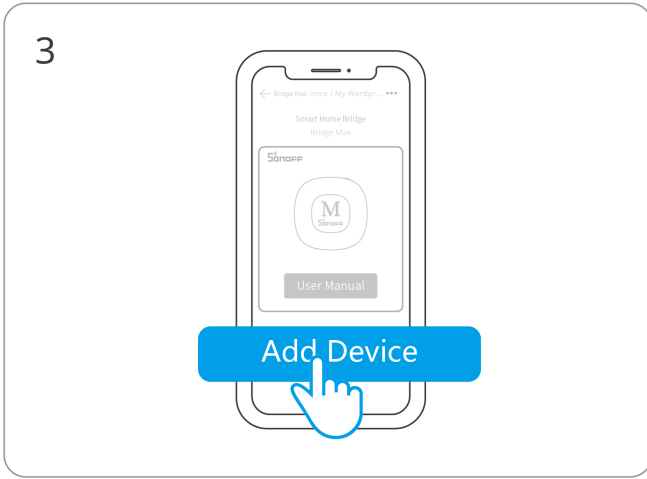
### 2-2. Scan QR Code to Add the Bridge



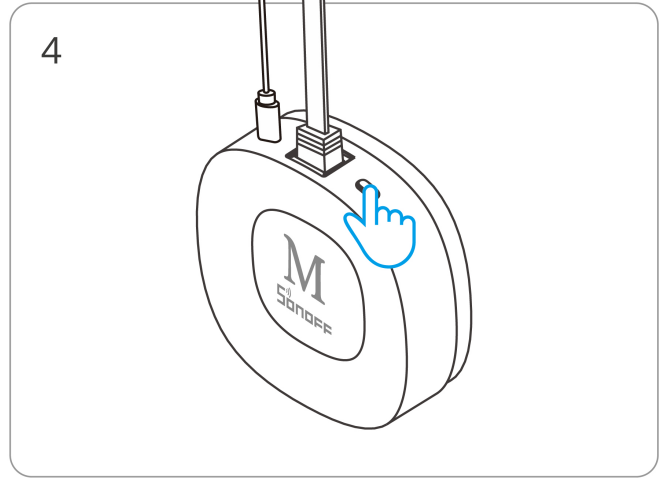
Open the eWeLink App and select "Scan".



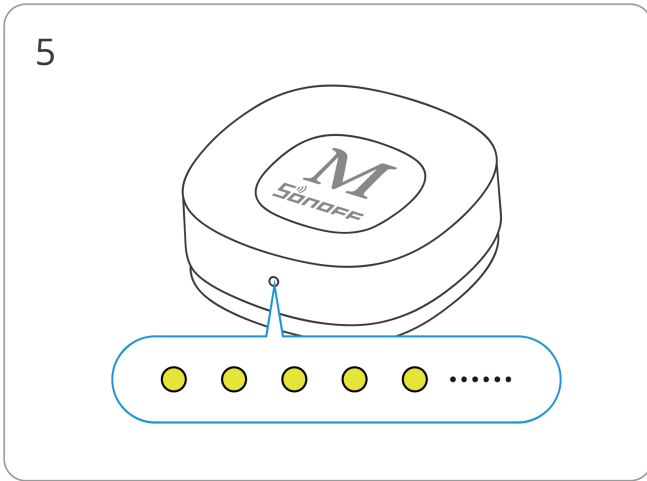
Scan the QR code on the device.



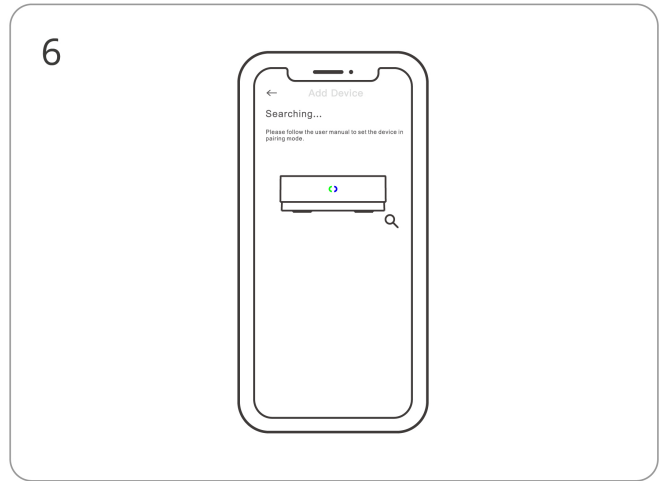
Select "Add Device".



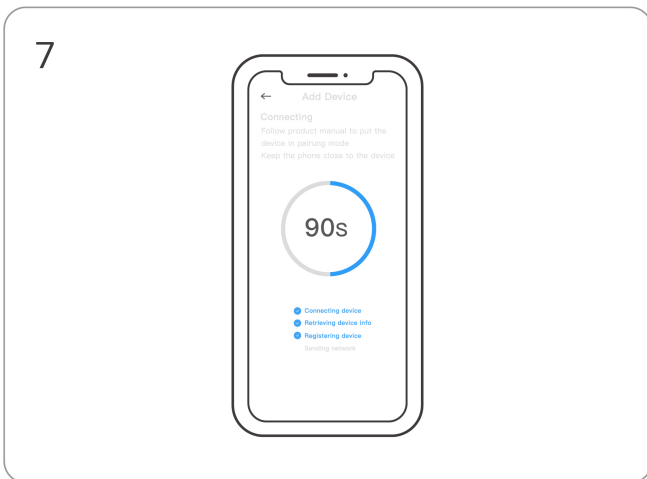
Press and hold the device button for 3 seconds. (If the device has exited pairing mode)



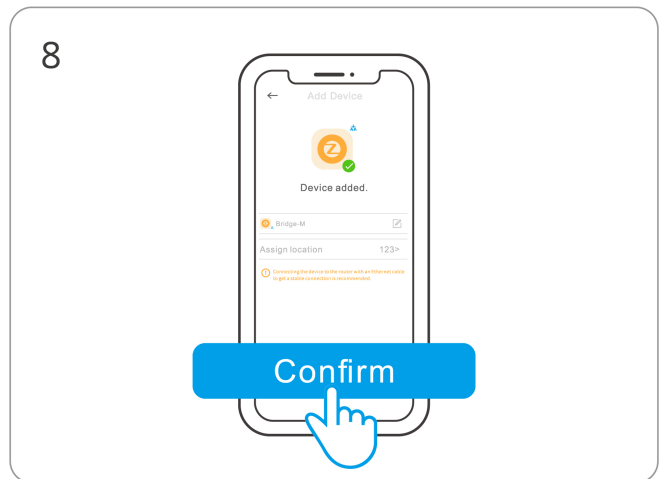
Check LED indicator blinking status (**Slow Blinking Yellow**).



Wait for device detection.



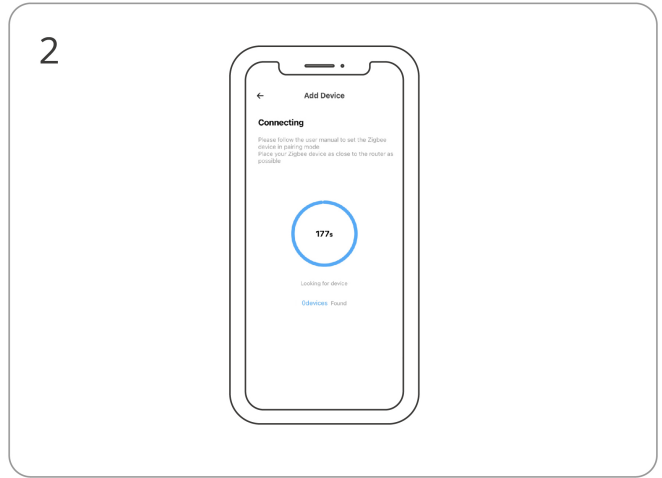
Device is connecting.



Device added successfully.

## 2–3. Add Zigbee Devices

Put the Zigbee device into pairing mode. Click "+ Add Device" on the eWeLink App (LED indicator shows fast blinking yellow status). Wait for the search to complete and add the Zigbee device.



## Bridge Device to Matter Ecosystem

Supports bridging the following types of devices to third-party Matter platforms such as Apple Home, Alexa, Google Home, and Home Assistant:

- Added Zigbee devices
- Devices under your eWeLink account
- Added eWeLink-Remote devices
- BTHome devices
- Home Assistant entities

For detailed instructions, please refer to: <https://help.sonoff.tech/docs/BridgeM>

## FCC compliance statement

Responsible Party Name: SONOFF TECHNOLOGY LLC

Address: 14777 NE 40th St, Suite 201 Bellevue, WA 98007

Email Address: usres@itead.cc    FCC ID: 2APN5-BRIDGEM

1. This device complies with part 15 of the FCC Rules. Operation is subject to the following two conditions:

(1) This device may not cause harmful interference, and

(2) This device must accept any interference received, including interference that may cause undesired operation.

2. Changes or modifications not expressly approved by the party responsible for compliance could void the user's authority to operate the equipment.

Note: This equipment has been tested and found to comply with the limits for a Class B digital device, pursuant to part 15 of the FCC Rules. These limits are designed to provide reasonable protection against harmful interference in a residential installation. This equipment generates, uses and can radiate radio frequency energy and, if not installed and used in accordance with the instructions, may cause harmful interference to radio communications. However, there is no guarantee that interference will not occur in a particular installation. If this equipment does cause harmful interference to radio or television reception, which can be determined by turning the equipment off and on, the user is encouraged to try to correct the interference by one or more of the following measures:

—Reorient or relocate the receiving antenna.

—Increase the separation between the equipment and receiver.

—Connect the equipment into an outlet on a circuit different from that to which the receiver is connected.

—Consult the dealer or an experienced radio/TV technician for help.

FCC Radiation Exposure statement:

This equipment complies with FCC radiation exposure limits set forth for an uncontrolled environment.

This equipment should be installed and operated with a minimum distance of 20 cm between the radiator and your body.

This transmitter must not be co-located or operating in conjunction with any other antenna or transmitter.

## **EU Declaration of Conformity**

Hereby, Shenzhen Sonoff Technologies Co., Ltd. declares that the radio equipment type Bridge-M is in compliance with Directive 2014/53/EU. The full text of the EU declaration of conformity is available at the following internet address: <https://sonoff.tech/compliance/>

## For CE frequency

### EU Operating Frequency Range:

Wi-Fi: 802.11 b/g/n20 2412–2472 MHz, 802.11 n40:2422–2462 MHz

802.11 a/n/ac/ax 5150–5250 MHz, 5725–5850 MHz

BLE: 2402–2480 MHz

Zigbee: 2405–2480 MHz

### EU Output Power:

Wi-Fi 2.4G $\leq$ 20dBm

Zigbee $\leq$ 10dBm

BLE $\leq$ 10dBm

Wi-Fi 5150–5250MHz < 23dBm

Wi-Fi 5725–5850MHz < 14dBm

5G is only available indoors.

Under normal use of condition, this equipment should be kept at a separation distance of at least 20 cm between the antenna and the body of the user.

## WEEE Disposal and Recycling Information



WEEE Disposal and Recycling Information All products bearing this symbol are waste electrical and electronic equipment (WEEE as in directive 2012/19/EU) which should not be mixed with unsorted household waste. Instead, you should protect human health and the environment by handing over your waste equipment to a designated collection point for the recycling of waste electrical and electronic equipment, appointed by the government or local authorities. Correct disposal and recycling will help prevent potential negative consequences to the environment and human health. Please contact the installer or local authorities for more information about the location as well as terms and conditions of such collection points.



## WARNING

1. This product is not a toy and not intended for use by children. For adult use only.
2. The appliance is suitable for moderate climates only.
3. The ventilation must not be impaired by covering the appliance with items such as newspapers, table cloths, curtains, etc.
4. Naked flame sources, such as candles, must not be placed on the appliance.

Scatola	Manuale	Pellicola
PAP 21	PAP 22	CPE 7
Carta	Carta	Plastica

RACCOLTA DIFFERENZIATA

Verifica le disposizioni del tuo Comune.

Separa le componenti e conferiscile in modo corretto.

# SONOFF

Manufacturer: Shenzhen Sonoff Technologies Co., Ltd.

Address: 3F & 6F, Bldg A, No. 663, Bulong Rd, Shenzhen, Guangdong, 518000, China

Service email: support@itead.cc Website: sonoff.tech

Made in China



Points de collecte sur [www.quefairedemesdechets.fr](http://www.quefairedemesdechets.fr)  
Privilégiez la réparation ou le don de votre appareil !

