

User Manual BASIC-1GS (EN)



Matter Over WiFi Smart Switch

User Manual V1.0

Introduction

BASIC Gen5 is a Wi-Fi-enabled 10A single-channel smart switch that offers app remote control, voice control, scheduling, and other features. Effortlessly manage your home appliances anytime, anywhere, and create personalized smart scenes to simplify your daily life. It supports the Matter protocol, enabling seamless integration with smart devices from other brands to build your home automation system.



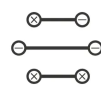
Remote Control



Voice Control



Timer Schedule



Power-on State



Support Matter



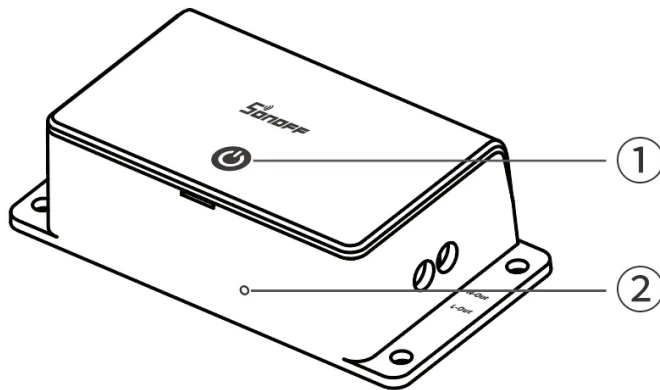
Smart Scene



Share Device



Group Control



① Button

- Single press: Turn on/off the smart device.
- Press and hold for 5 seconds: Device enters the pairing mode. (Pairing time 10 minutes)

② LED indicator (Blue)

eWeLink Mode

- Flashes two short and one long: Device is in pairing mode.
- Keeps on: Device is online.
- Flashes once: Offline
- Flashes twice: Device is connected to the router but not to the cloud.

Matter Mode

- Flashes two short and one long: Device is in pairing mode.
- Keeps on: Device is online.
- Flashes once: Offline

Platform Certification



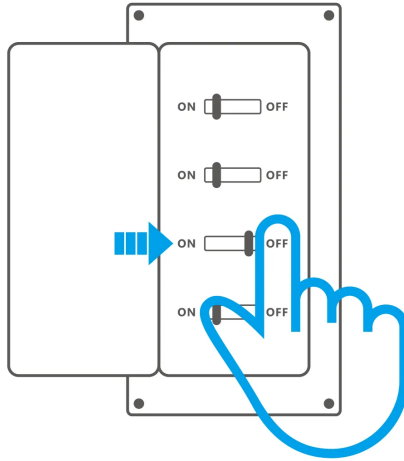
Specification

Product name	Basic Gen5
--------------	------------

Product series	Basic series
Product type	Matter Over WiFi Smart Switch
Model	BASIC-1GS
MCU	BK7238
Rating	100-240V~ 50/60Hz 10A Max Resistive load $\leq 50\mu$
Wi-Fi	IEEE 802.11b/g/n 2.4GHz
Net weight	44.8g
Product dimension	80.5x41.5x23.6mm
Color	White
Casing material	PC
Wiring	T40, copper conductors only, limited to 16AWG to 14AWG SOL/STR
Applicable place	Indoor
Working temperature	10T40 (-10°C~40°C)
Working humidity	5-95%RH, non-condensing
Certification	CE/FCC/RoHS

Installation

1. Power off

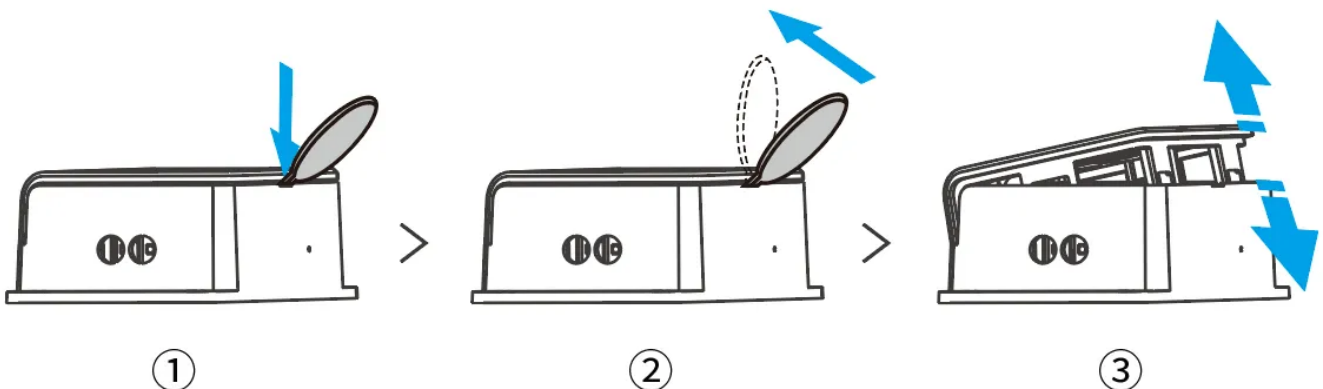


WARNING

Please install and maintain the device by a professional electrician. To avoid electric shock hazards, do not operate any connection or contact the terminal connector while the device is powered on!

2. Remove the top cover

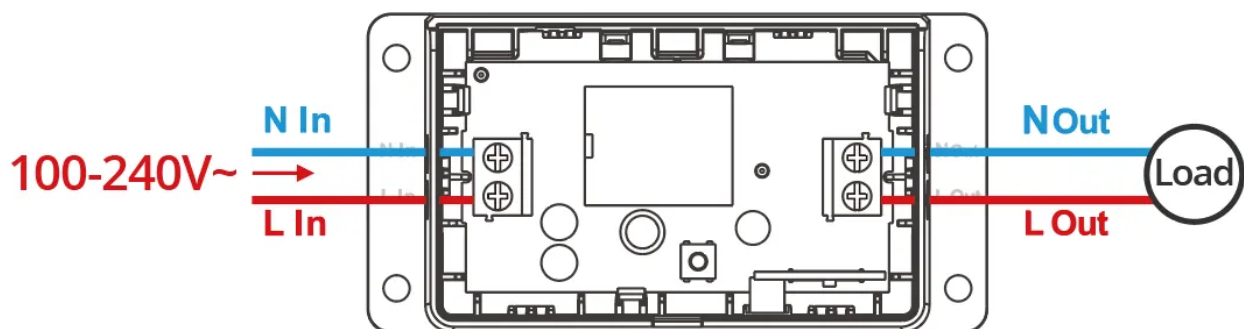
Use a metal pry piece to press down at the notch (Fig. ①), then pry upwards (Fig. ②), and finally separate the top cover from the bottom case (Fig. ③).



2. Wiring instruction

⚠ To ensure the safety of your electrical installation, it's essential that either a Miniature Circuit Breaker (MCB) or a Residual Current operated Circuit-breaker with Integral Overcurrent protection (RCBO) with an electrical rating of 10A has been installed before the BASIC Gen5.

⚠ For single-phase use only (100–240V~). Connecting to multiple phases may result in damage to the device.



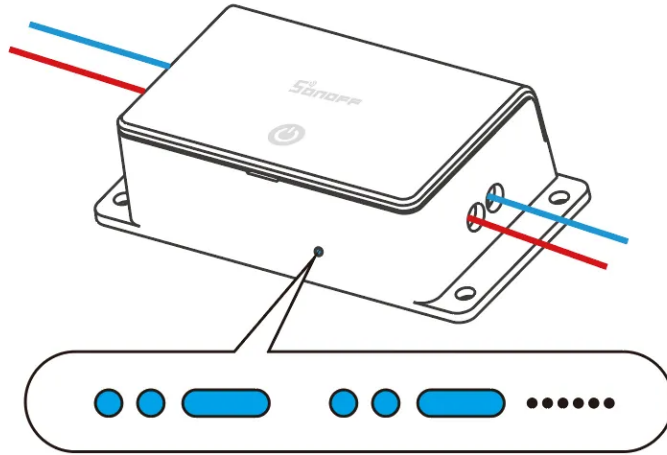
⚠ Ensure the wiring is correctly connected before installing the top cover. (Do not power on the device before the top cover is properly installed to avoid the risk of electric shock!)

Instructions for wiring symbols

Terminals		Wires	
N In	Neutral Terminal	N	Neutral Line
L In	Live Terminal	L	Live Line (100–240V~)
N Out	Neutral Output Terminal (100–240V~)		
L Out	Live Output Terminal (100–240V~)		

3. Power on

When the device is used for the first time, it will enter pairing mode by default after being powered on. At this time, the LED indicator will flash in a pattern of "two short and one long".



⚠ The device will exit the Pairing Mode if not paired within 10mins. If you want to enter this mode, please long-press the button for about 5s until the LED indicator changes in a cycle of two short and one long flash and release.

Matter Ecosystem User Guide

Open a Matter-compatible App to scan the Matter QR code on the Quick Guide or the device itself to add the device.



Add to Apple via
Matter



Add to Google via
Matter



Add to Alexa via
Matter

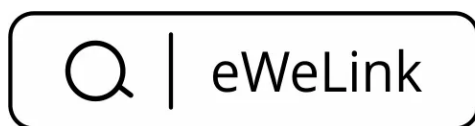


Add to SmartThings
via Matter

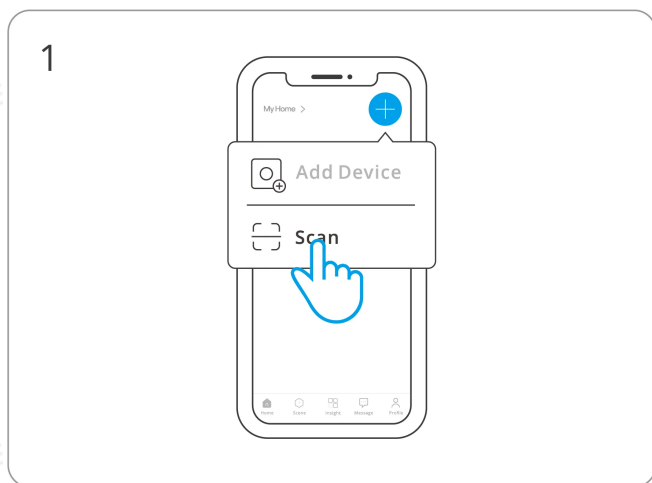
eWeLink Ecosystem User Guide

① Download the eWeLink App

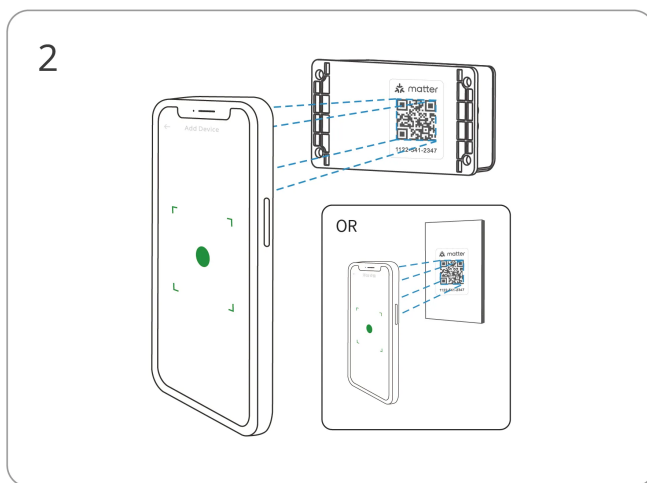
Please download the "eWeLink" App from Google Play Store or Apple App Store.



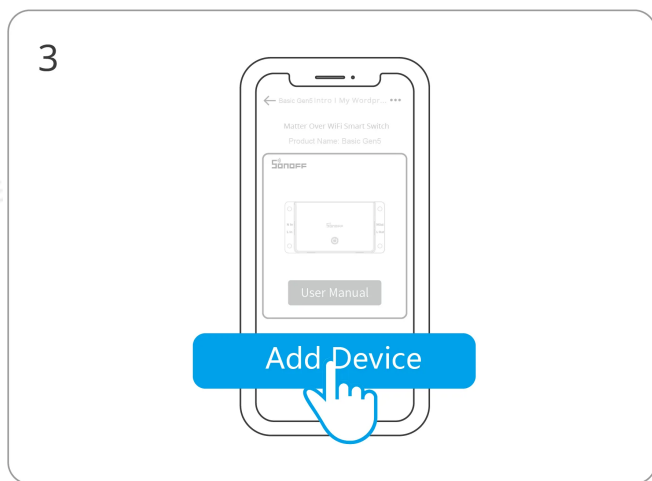
② Add Device



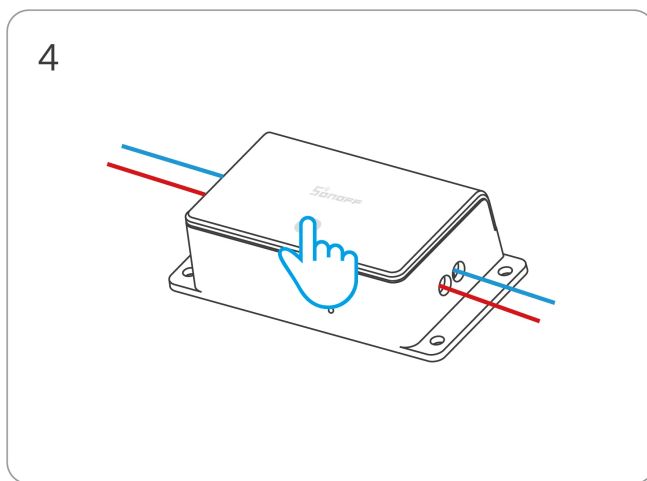
Enter "Scan"



Scan the QR code on the quick guide or the device

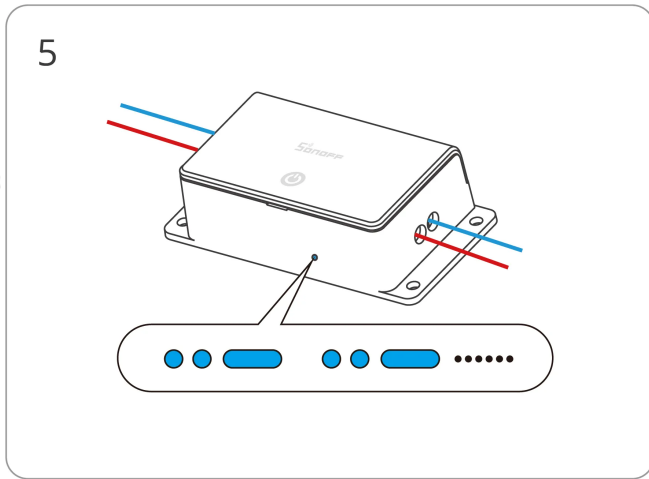


Select "Add Device"

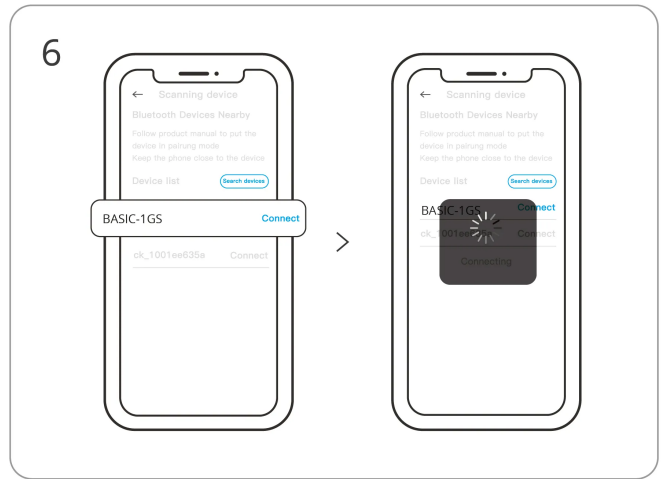


(If the device exits pairing mode)

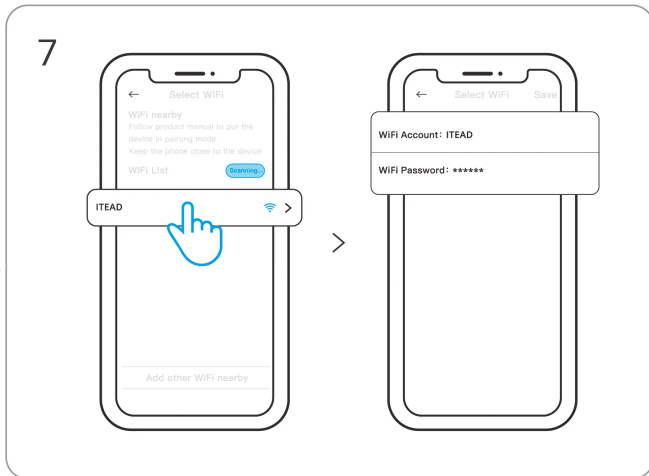
Long press the button for 5 seconds



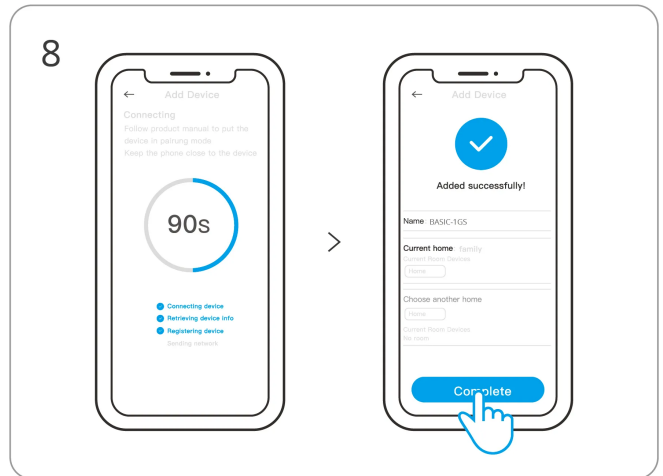
Check LED indicator flashing status
(Two short and one long)



Search for the device and start connecting

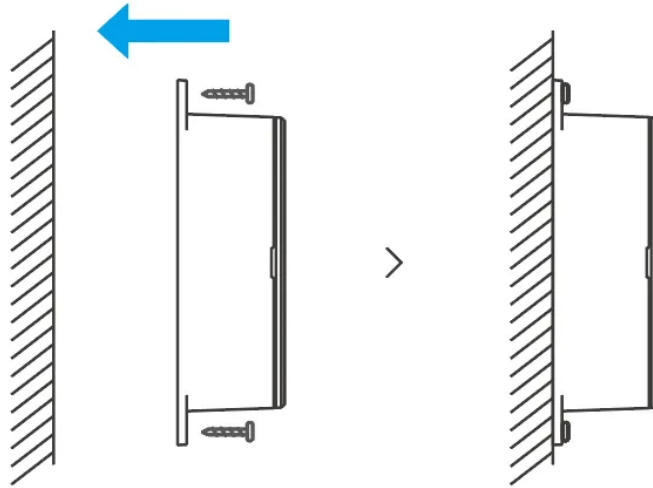


Select the "Wi-Fi" network and enter the password



Device "Added completely"

Installation

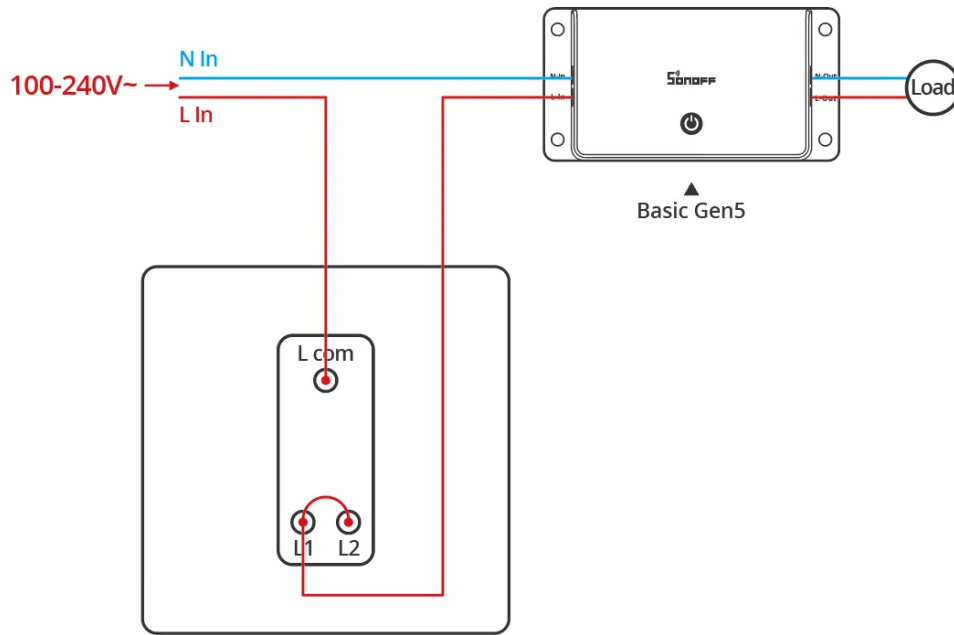


⚠ If you need to mount the device to a wall, please use M3 screws for installation.

Magic Switch Mode

After short-circuiting the L1 and L2 of the switch terminals through the wires, the device can still be online and can be controlled through the App after the users flip the wall switch to turn off/on the light.

- This feature is currently supported only within the eWeLink ecosystem and is not compatible with other platforms at this time.
- Add a wire to connect L1 to L2 on the wall switch following the manual, and the device will stay online even when you switch it off via the wall switch after "Magic Switch Mode" is enabled.
- The "Power-on State" will automatically be set to OFF, to make the "Magic Switch Mode" functional when enabled.
- The "Magic Switch Mode" will automatically disable after your adjustment to the "Power-on State".



⚠ Requirements for realizing the function (connecting L1/L2).

- ⚠ Only compatible with mainstream brands of double-pole rocker switches. The rear-end light needs to be compatible with mainstream brands of LED, energy-saving lamps, and incandescent lamps ranging from 3W to 100W.
- ⚠ This function also applies to dual-control lamps.

Factory Reset

Trigger conditions (any one condition met)

- Delete the device on the eWeLink App.
- The device that has been successfully paired can be paired again with another eWeLink account to add it.

FCC compliance statement

Responsible Party Name: SONOFF TECHNOLOGY LLC

Address: 14777 NE 40th St, Suite 201 Bellevue, WA 98007

Email Address: usres@itead.cc FCC ID: 2APN5-BASIC1GS

1. This device complies with part 15 of the FCC Rules. Operation is subject to the following two conditions:

(1) This device may not cause harmful interference, and

(2) This device must accept any interference received, including interference that may cause undesired operation.

2. Changes or modifications not expressly approved by the party responsible for compliance could void the user's authority to operate the equipment.

Note: This equipment has been tested and found to comply with the limits for a Class B digital device, pursuant to part 15 of the FCC Rules. These limits are designed to provide reasonable protection against harmful interference in a residential installation. This equipment generates, uses and can radiate radio frequency energy and, if not installed and used in accordance with the instructions, may cause harmful interference to radio communications. However, there is no guarantee that interference will not occur in a particular installation. If this equipment does cause harmful interference to radio or television reception, which can be determined by turning the equipment off and on, the user is encouraged to try to correct the interference by one or more of the following measures:

—Reorient or relocate the receiving antenna.

—Increase the separation between the equipment and receiver.

—Connect the equipment into an outlet on a circuit different from that to which the receiver is connected.

—Consult the dealer or an experienced radio/TV technician for help.

FCC Radiation Exposure statement:

This equipment complies with FCC radiation exposure limits set forth for an uncontrolled environment.

This equipment should be installed and operated with a minimum distance of 20 cm between the radiator and your body.

This transmitter must not be co-located or operating in conjunction with any other antenna or transmitter.

EU Declaration of Conformity

Hereby, Shenzhen Sonoff Technologies Co., Ltd. declares that the radio equipment type BASIC-1GS is in compliance with Directive 2014/53/EU. The full text of the EU declaration of conformity is available at the following internet address: <https://sonoff.tech/compliance/>

For CE Frequency

EU Operating Frequency Range:

Wi-Fi: 802.11 b/g/n20 2412–2472 MHz

BLE: 2402–2480 MHz

EU Output Power:

Wi-Fi 2.4G \leq 20dBm

BLE \leq 20dBm

Under normal use of condition, this equipment should be kept a separation distance of at least 20 cm between the antenna and the body of the user.

WEEE Disposal and Recycling Information



WEEE Disposal and Recycling Information All products bearing this symbol are waste electrical and electronic equipment (WEEE as in directive 2012/19/EU) which should not be mixed with unsorted household waste. Instead, you should protect human health and the environment by handing over your waste equipment to a designated collection point for the recycling of waste electrical and electronic equipment, appointed by the government or local authorities. Correct disposal and recycling will help prevent potential negative consequences to the environment and human health. Please contact the installer or local authorities for more information about the location as well as terms and conditions of such collection points.

Scatola	Manuale
PAP 21	PAP 22
Carta	Carta
RACCOLTA DIFFERENZIATA	

Verifica le disposizioni del tuo Comune.

Separa le componenti e conferiscile in modo corretto.

SONOFF

Manufacturer: Shenzhen Sonoff Technologies Co., Ltd.

Address: 3F & 6F, Bldg A, No. 663, Bulong Rd, Shenzhen, Guangdong, 518000, China

Service email: support@itead.cc Website: sonoff.tech

Made in China



Points de collecte sur www.quefairedemesdechets.fr
Privilégiez la réparation ou le don de votre appareil !

