

温控器说明书

尺寸:90*70mm

128g铜版纸, 四色印刷, 无表面处理, 直4竖3折

HC-T010-EWF Series Thermostat

User Guide



For Water Heating/Boiler/Electric Heating

WELCOME

Thank you for your purchase. Your new thermostat will provide uniform and comfortable temperature control throughout every room in your property. We bring together technology, craftsmanship and the highest quality materials to provide you with a safe reliable product combined with sleek contemporary design. Please read this installation/programming manual for comprehensive instructions on installing and operating your thermostat. Please also ensure a suitably qualified person installs your thermostat and complies with all local regulations.

IN THE BOX YOU WILL FIND

Thermostat	1 pc	Screws	2 pcs
User Guide	1 pc	QC Passed	1 pc
Floor sensor	1 pc		

ABOUT YOUR THERMOSTATS

The HC-T010-WIFI series range has been developed to control electric underfloor, water heating or water/gas boiler systems. These units are designed for use in commercial, industrial, civil and domestic properties.

FEATURES

On Appearance

1. Convenient operation creates convenient life.
2. Fashion design blends in with any decor.
3. Touch Screen display with backlight is easy to read, even in the dark.
4. Bright buttons always remind you the world truly exist.
5. Easy UI interface could be used even by child.
6. Optionals of black and white housing.

On Functionality

1. Powerful functions are available such as Modbus/Wi-Fi etc.
2. 0.5°C Accuracy keeps temperature within the level you set.
3. Data memory when power is off.
4. 5+2 six periods programmable maximize comfort and economy.
5. Create thermostat group to Centralized control
6. Integrated with Amazon Echo, Google Home, Tmall Genie, IFTTT.
7. All setting languages synchronize your time zone, address and language.
8. No limit to add rooms and support Smart Scene.

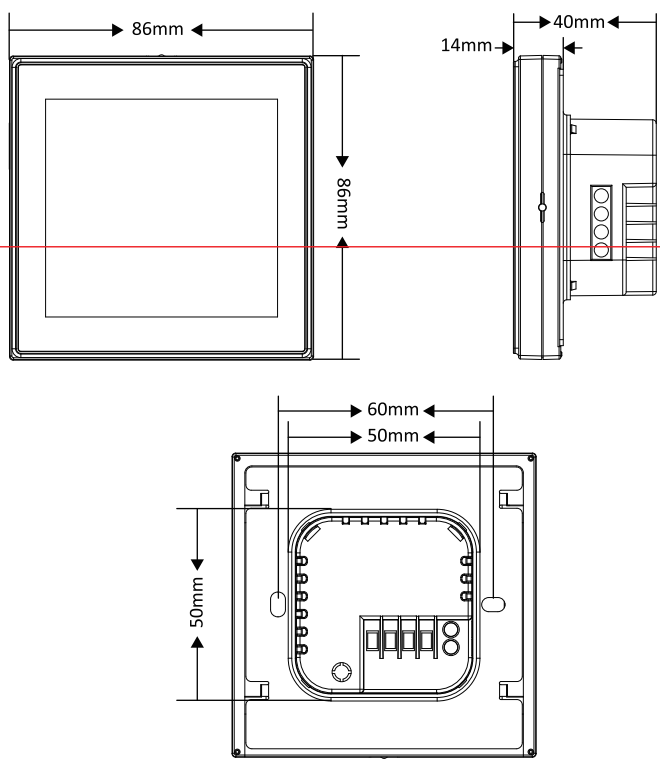
1

MODEL DEFINITION

GA: Water heating, 5A	GB: Electric floor Heating, 16A
GC: Water/Gas Boiler, 5A	L: Backlight
P: Weekly Programmable	W: Wi-Fi
N: Modbus Communication	S2: Both internal sensor and floor external sensor

For example: HC-T010-WIFI-GCLP

DIMENSION



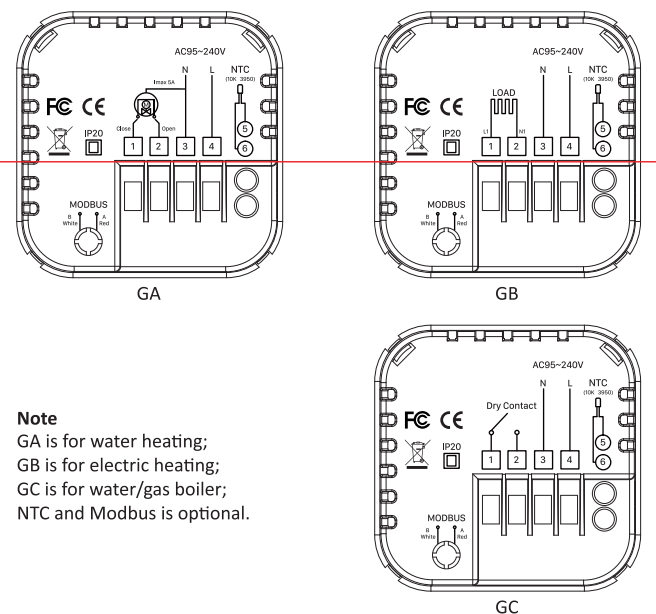
2

BEFORE WIRING AND INSTALLING

1. Read these instructions carefully. Failure to follow them could damage the product or cause a hazardous condition.
2. Check the ratings given in the instructions and on the product to make sure the product is suitable for your application.
3. Installer must be a trained, experienced service technician.
4. After installation is complete, check out product operation as provided in these instructions.

CAUTION: Electrical Shock or Equipment Damage Hazard. Can shock individuals or short equipment circuitry. Disconnect power supply before installation.

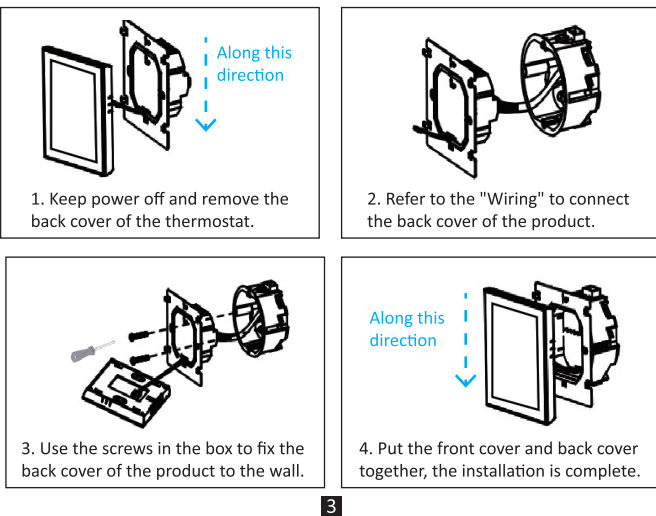
WIRING



Note
GA is for water heating;
GB is for electric heating;
GC is for water/gas boiler;
NTC and Modbus is optional.

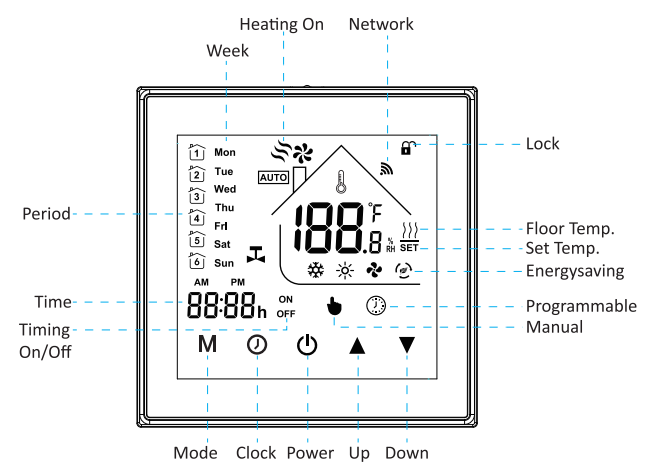
INSTALLATION

Your thermostat is suitable for installation within a standard 86mm pattress box or European 60mm pattress box.



3

HOME SCREEN QUICK REFERENCE



OPERATION

1. Power On/off: Press "⏻" to turn the thermostat on/off.

2. Mode switch among "Manual/Programmable/ECO"

Touch "M" (mode) to change among "Manual/Programmable/ECO". In the manual mode, "●" will display in the bottom of the screen; In programmable mode, "⌚" will display in the bottom of the screen; In ECO mode, "⚡" will display in the right side.

3. Setting Temperature

In the mode of ECO and programmable, set temperature, time could not be adjusted. If the user want to change, please go to manual mode. In the mode of manual, press "▲" and "▼" set the desired temperature.

4. Adjusting/Setting the Clock

Touch the icon "⌚" to set minute, hour and weekday by using "▲" and "▼". Press "⌚" once more to confirm and exit.

5. Locking your Thermostat

Press and hold "▲" and "▼" 5 seconds to lock/unlock your thermostat.

6. Adjusting/setting the Program Schedules

When Wi-Fi connection is made, your thermostat will automatically accept the program schedule made via the APP on your device (see below for detailed instructions). To set the program schedules through your thermostat (NOT via your smartphone/tablet) simply follow the instructions as below:

Note: Setting the programme schedule through your thermostat can only be carried out if there is no Wi-Fi connection between your thermostat and smartphone/tablet.

Press the "M" key to switch the thermostat to manual mode. After entering manual mode, icon "●" will be displayed. Now, press the "⌚" key 3 times to enter the Monday to Sunday programming setting ("Mon", "Tue", "Wed", "Thu", "Fri", "Sat", "Sun" will display on the screen), press "▲" and "▼" to select the date to be programmed. Press "⌚" to enter the date for setting, and Use "▲" and "▼" to adjust each value, and then press "⌚" to switch between 1~6 Period, time and temperature.

After finishing the above settings, press "⌚" to exit the programming mode.

4

Default setting for program schedule

Period	Working days (Monday to Friday)		weekend (Saturday to Sunday)	
	Time	Temperature	Time	Temperature
Period 1	06:00	20 °C	06:00	20 °C
Period 2	08:00	15 °C	08:00	20 °C
Period 3	11:30	15 °C	11:30	20 °C
Period 4	13:30	15 °C	13:30	20 °C
Period 5	17:00	22 °C	17:00	20 °C
Period 6	22:00	15 °C	22:00	15 °C

7. Checking the Temperature of Floor Sensor

Press and hold the arrow "▼" for 5 seconds to display the temperature of floor sensor.

8. Setting the High Senior Options

Turn off the thermostat, press "M" and "⌚" buttons at the same time for 5 seconds to enter the advanced function setting, press "M" button for function selection, press "▲" and "▼" to adjust individual functions. All high level option settings will take effect automatically after restarting the thermostat.

Code	Function	Setting and options	Default
1	Temperature Compensation	-9 °C to +9 °C (for internal sensor)	-1
2	Temperature Deadzone	1 °C ~ 5 °C	1
3	Button Locking	00: All buttons are locked except power button. 01: All buttons are locked.	01
4	Sensor Types	In: Internal Sensor (to control or limit the temp.) Ou: Only external sensor AL: Internal/ External Sensor (Internal sensor to control the temp., external sensor to limit the temp.)	AL
5	Min. Set Temp.	5 °C ~ 15 °C	05
6	Max. Set Temp.	15 °C ~ 45 °C	35
7	Display Mode	00: Display both set temp. and room temp. 01: Display set temp. only	00
8	Low Temperature Protection Setting	0 °C ~ 10 °C	00
9	High Temperature Protection Setting	25 °C ~ 70 °C	45
A	Economy Mode	00: Non-energy saving mode 01: Energy saving mode	0
B	Economy Temperature Range	0 °C ~ 30 °C	20

5

WIFI CONNECTION

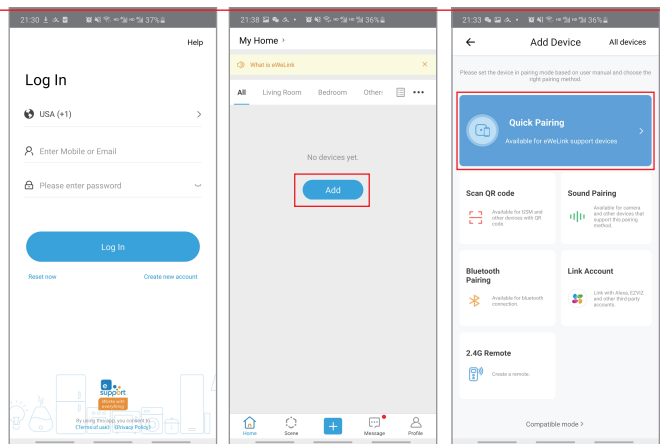
1. Scan the QR code to download "eWeLink" App, or you can also search keyword "eWeLink" at App Store or Google play to download App. (Figure 1)



(Figure 1)

2. Open "eWeLink", log in or register your account with your mobile number. Type in the verification code sent to your mobile, then set your login password. Then enter into the APP. (figure 2)

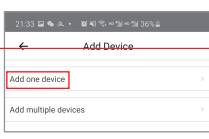
3. Open the APP, press "Add" to add device (figure 3). Choose "Quick Pairing" (figure 4); Then select "Add one device" (figure 5).



(Figure 2)

(Figure 3)

(Figure 4)

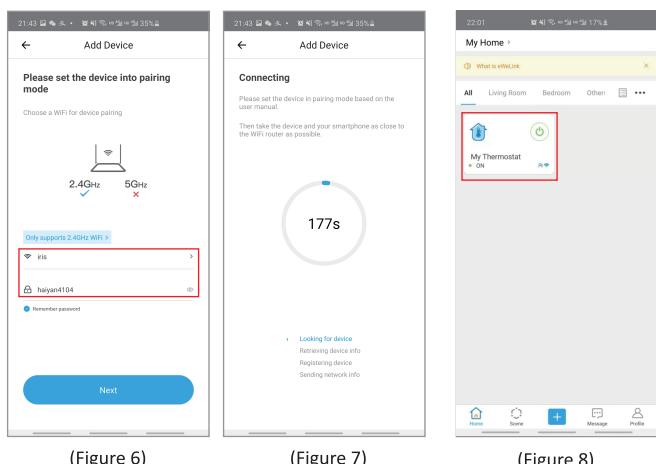


(Figure 5)

4. Power on the thermostat. The app can automatically detect the thermostat device. Make sure your smart phone and the thermostat are under the same Wi-Fi network at 2.4GHz connection. Choose the Wi-Fi account you want to connect, and enter the password, press "NEXT" (figure 6). The whole pairing process typically take up to 5~90 seconds to complete (figure 7).

5. After successful connection, it will enter home interface (figure 8). Press "Thermostat" icon you just connected, enter into product main control interface (figure 9). You can make relevant settings according to your needs.

6



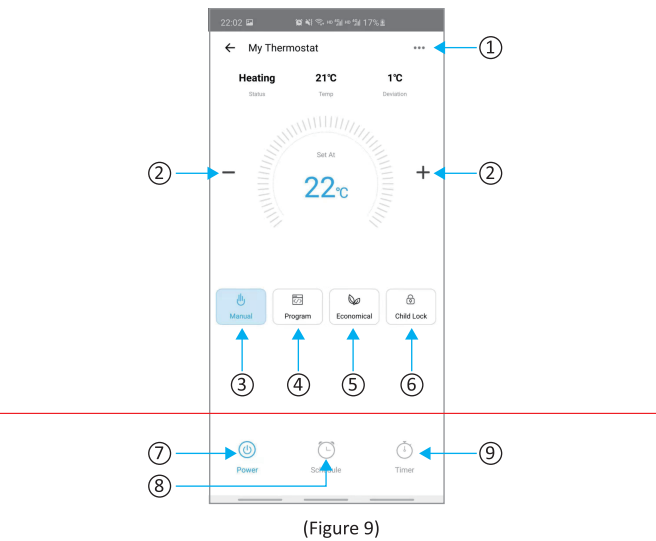
(Figure 6)

(Figure 7)

(Figure 8)

PROGRAMMING YOUR THERMOSTAT

After a successful connection, it will enter the thermostat setting interface, as shown in Figure 9. You can make relevant settings according to your needs.



(Figure 9)

- ① Settings.
- ② Adjust the temperature, the temperature will show in the centre.
- ③ Manual button: In this mode, the thermostat can control the temperature by manual adjustment.
- ④ Program button: In this mode, the thermostat will follow the programmed heating time period and temperature are used for temperature control.
- ⑤ Economical button: In this mode, the temperature will be kept 20 degree. This temperature can not be changed or adjusted.
- ⑥ Turn on this function, the thermostat buttons are locked and can not be operated.
- ⑦ Power on/off button, press it, turn on the device, press it again, turn off the device.
- ⑧ Schedule
- ⑨ Timing On/Off

7

About Program

You can set it on weekdays or weekend, and then set the time / temperature and adjust it according to your work schedule.

You can set 6 periods (time and temperature), as shown in figure 10.

Once your schedule has been set, click save and the application will transfer the programmed data to the thermostat and the plan has been saved.

Add Third-party Control

Click the "Add" icon to enter the Advanced features interface. You can add third-party control, such as Amazon Echo or Google Home. (Figure 11)

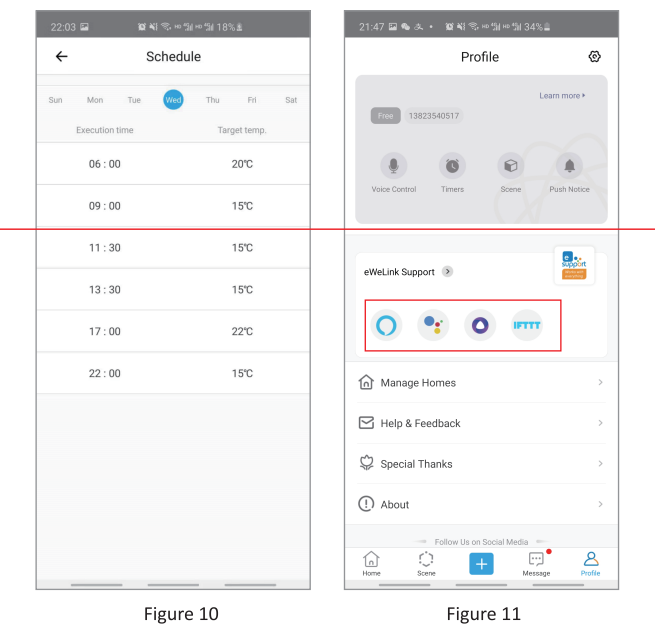


Figure 10

Figure 11

About Economical Mode

To enable this function, press "M" button on the thermostat to switch among "Manual/Programmable/ECO" modes. If it is turned off, press "M" button on the thermostat to switch between "Manual/Programmable" modes.

SIMPLE EXCEPTION HANDLING

No.	Phenomenons	Handling
1	Power is on but without display.	Check if the terminals between LCD panel and Power Unit Box is loosen.
2	Without output but display works.	Use a new LCD panel or new Power Unit Box to replace the old one.
3	Room Temp. is a little different from the actual.	Do temperature calibration in item 1 of high senior options

8