

Desktop Type RF Smart Thermostat for wall-hung boiler

Super strong RF signal for sub1G Communication



English



Version:1.0(11/2023) 71.04.00350

◆ Personalized Scanning Code

Scan the corresponding QR code according to your needs to obtain the content

Manual

- Scan the QR code to obtain the electronic manual in multi-languages.
- Scannen Sie den QR-Code, um das elektronische Handbuch in mehreren Sprachen zu erhalten.
- Escanee el Código QR para obtener un manual electrónico multilingüe.
- Zeskanuj kod QR, aby uzyskać elektroniczną instrukcję w wielojęzycznym skanowaniu.
- двухмерных кодов для получения многоязычных электронных руководств.

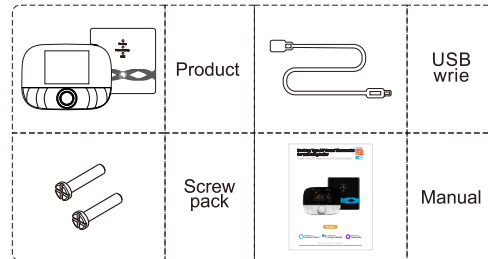
Operation Video

- Scan the QR code to obtain the video of equipment operation steps.
- Scannen Sie den QR-Code, um das Video der Geräteschritte zu erhalten.
- Escanee el Código QR para obtener el video de los pasos de operación del dispositivo.
- Zeskanuj kod QR, aby uzyskać wideo kroków obsługi sprzętu.
- Сканируйте QR - код, вы получаете видео шагов работы устройства.

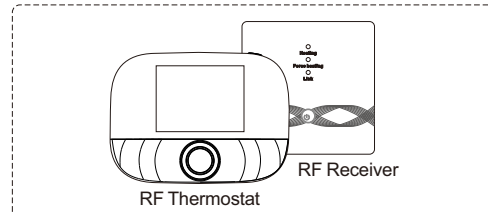
RF Pairing Video

- Scan QR code to obtain RF pairing operation steps video of equipment.
- Scannen Sie QR-Code, um HF-Pairing-Operationsschritte Video der Ausrüstung zu erhalten.
- Escanee el Código QR y obtenga el video de los pasos de operación de emparejamiento de radiofrecuencia del dispositivo.
- Zeskanuj kod QR, aby uzyskać kroki operacyjne parowania RF wideo sprzętu.
- Сканируйте QR - код и получите видео шагов работы радиочастотной пары устройства.

◆ Standard Accessories



◆ Product Overview



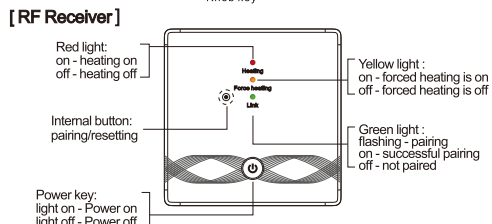
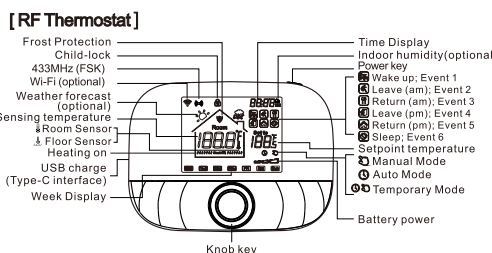
This set is suitable for wall-hung boiler temperature control. As long as you install the RF Receiver device near the wall-hung boiler, even if the RF Thermostat is placed in the living room or room (with an open distance of 200 meters), the RF Receiver can be controlled by the RF Thermostat.

◆ Product Overview

[RF Thermostat]	
Power supply	2 x 1.5 V alkaline AA batteries / USB powered (Type C interface)
Temp. setting range	5~95°C
Operation temperature range	-5~50°C
Measurement accuracy	0.1°C
Setting temp. accuracy	0.5°C
Transmission distance	≤200m in the open air
Protection level	IP20
Wireless frequency	433MHz (FSK) / 433MHz (Bidirectional FSK)

[RF Receiver]	
Power supply	AC100~240V; 50/60Hz
Device power consumption	1W Max
Ambient temperature	-5~50°C
Transmission distance	≤200m in the open air
Wireless frequency	433MHz (FSK) / 433MHz (Bidirectional FSK)

◆ Display Symbols



◆ RF Thermostat operating instructions









Function	Steps
Power on/off	Press "power key" shortly to turn on/off the thermostat.
Time setting	Press "power key" for 3 seconds to set time.
Temperature setting	Rotate "knob key" to change setting temperature by 0.5°C.
Temperature control mode	Press "knob key" shortly to switch manual/auto mode.

◆ RF Thermostat operating instructions

Function	Steps
Child-lock	Press "knob key" + "power key" for 3 seconds to activate/deactivate child-lock.
Weekly programming	Press "knob key" for 3 seconds to edit weekly programming.
Backlight Control	After plugging in the Type-C USB cable, in the power-on state, press "power key" fastly twice to backlight control setting. * You can adjust standby mode brightness from 0% to 100% on the Smart Life APP.
Pairing mode	Under power-off, press "knob key" + "power key" for 3 seconds to pairing mode.
Wi-Fi config	Under power-off, press "power key" for 3 seconds to Wi-Fi config.
Low power reminder	When the voltage is less than 2.3 V, the small icon of battery power flickers, it is recommended to replace the new battery as soon as possible before use.

◆ Weekly programming

Press "knob key" for 3 seconds to edit weekly programming.

Events		Symbols	Time		Temperature	
			Default value	Modify	Default value	Modify
Workdays	1		06:00	Rotate knob	20°C (68°F)	Rotate knob
	2		08:00		15°C (59°F)	
	3		11:30		15°C (59°F)	
	4		12:30		15°C (59°F)	
	5		17:00		22°C (72°F)	
	6		22:00		15°C (59°F)	
Weekends	1		08:00		20°C (68°F)	
	2		22:00		15°C (59°F)	

◆ RF Thermostat advanced setting

* Usually for Professional Technicians

During power-off, press "Knob key" for 3 seconds to enter advanced setting mode, then repress "Knob key" to switch to next mode. Press "power button" to save and exit advanced setting mode.

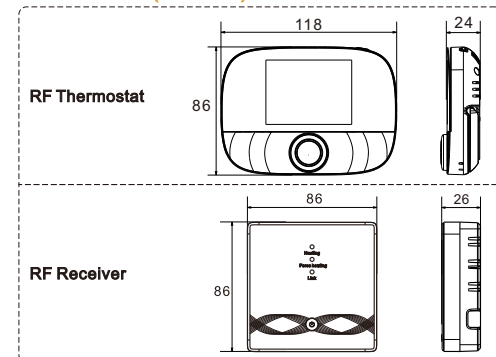
Code	Meaning	Knob key "⊗"	Default value
01	Temp. calibration	-9.9~9.9°C (-9~9°F)	-1°C
02	Temp. Dif.	0.5~10°C (1~10°F)	±1°C
03	Temp. upper limit	5~95°C (41~199°F)	50°C
04	Temp. lower limit	5~47°C (41~117°F)	5°C
05	Frost protection	ON: frost protection on OFF: frost protection off	OFF
06	Temperature unit	°C/°F	°C
09	Weekly programming setting	12345: 5/2 week mode 123456: 6/1 week mode 1234567: 7/0 week mode	12345
12	Child-lock	00: Child-lock inactivate when screen off; lock all when child-lock activate 01: Child-lock activate when screen off; lock all when child-lock activate 02: Child-lock activate when screen off; lock all except Fan Speed, Up and Down when child-lock activate 03: Child-lock activate when screen off; lock all except Power on/off when child-lock activate	00
13	Power-on-reset	00: Power OFF 01: Power ON 02: The last status before power loss	02
19	Reset	Press "⊗" for 3 seconds to reset	/

◆ RF Receiver operating instructions

Function	Steps	Display state
Power on/off	Press "⊗" shortly	Power light is always on/off
Pairing	Under power-off, press "⊗" for 3 seconds Under power on/off, short press "Internal Button"	"⊗" Green flashes quickly "⊗" Green flashes quickly
Distribution network is successful		Buzzer beeps + "⊗" light is on + "⊗" green light is on
Forced output	Under power-off, Double click the "⊗" Short press "⊗" to exit the forced output and return to the shutdown state	"⊗" Red light on + "⊗" yellow light on The "⊗" light goes out
External probe temperature limit setting	When powered on, press "⊗" for 3 seconds When the power light is flashing, short press "⊗" once When the power light is flashing, short press "⊗" twice When the power light is flashing, short three times press "⊗" for 3 seconds	"⊗" Power light flashes (No temperature limit, Default value) flashing + "⊗" green light is on (30°C temperature limit) "⊗" Power light is flashing + "⊗" yellow light is on (40°C temperature limit) "⊗" Power light is flashing + "⊗" red light is on (55°C temperature limit) Save and exit External sensor temperature limit temperature setting
	Under power-off, press "⊗" for 3 seconds, After the green light flashes "⊗", double-click the press "⊗" again	"⊗" lights flash once at the same time
Reset	Under power on/off, long press "Internal Button" for 3 seconds	"⊗" lights flash once at the same time

*Reminder: Newly Added Internal Button(Pairing/Reset)

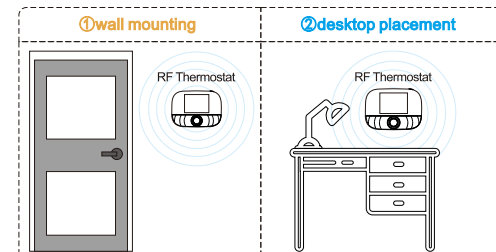
◆ Dimensions (Unit: mm)



◆ Installation location

The installation distance between the thermostat and the receiver does not exceed 200m (the distance can be judged according to the actual network coverage)

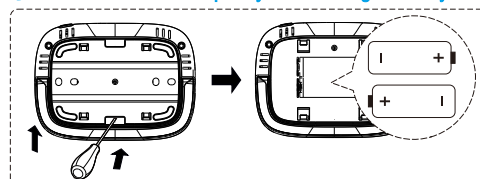
*Tip: There are two main ways to install the RF thermostat,



◆ RF Thermostat mounting steps

*Note: two power supply methods
We suggest using both power supply methods simultaneously
① 2 x 1.5 V alkaline AA batteries

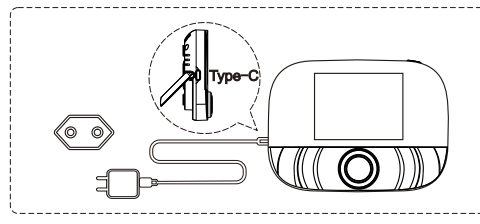
*Note:
① It is recommended to use brand new 1.5 V alkaline AA batteries.
② Please ensure the correct polarity when installing the battery.



- 1) Insert a screwdriver into the notch on the back of the thermostat, pry open the base and panel frame;
- 2) put the battery into the battery compartment of the device. After inserting the battery, reattach the back cover to complete the installation.

② USB powered (Type-C Interface)

Use Type-C cable to power the device through the Type-C interface.

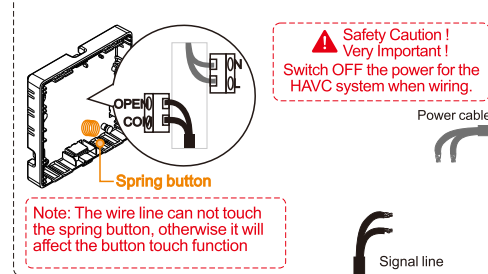


◆ RF Thermostat installation steps

- 1) Release front cover by inserting a head screw-driver into bottom crack.

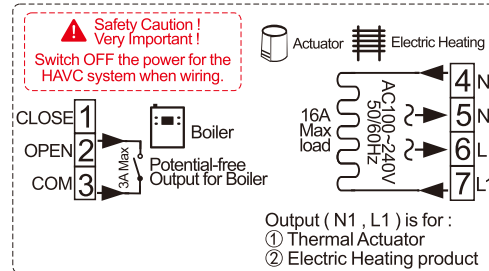
- 2) The user can choose the wiring method by himself.
① **Exposed wiring:** choose any one of the four directions, then use a flat-blade screwdriver to pry open along the dotted line;
② **Concealed installation and routing:** along the dotted line in the middle of the bottom shell, use a flat-blade screwdriver to pry open.)

- 3) Put the wire into the terminal and tighten it with a flat-blade screwdriver. After tightening the terminal screws, cover the upper cover to complete the installation.



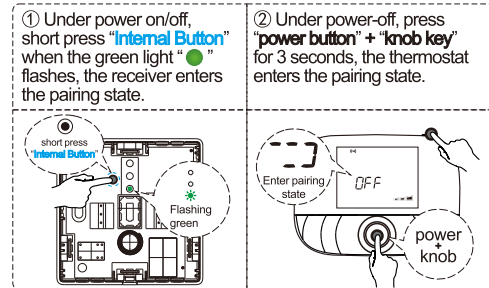
◆ RF Receiver wiring diagram

The thermostat operates in full capacity in areas with the altitude of less than 2500 above sea level. Power rating of external load should be less than or equal to 80% rated power of the thermostat in areas with altitude of 2500m to 4200m.



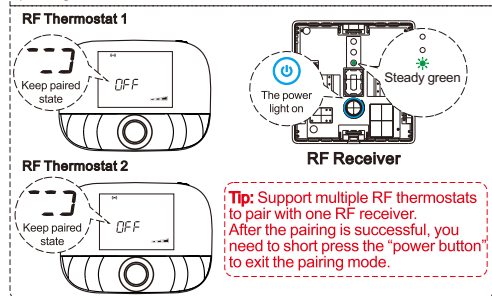
◆ Pairing steps

*Note: The thermostat set is already paired in the factory and you can use it directly.

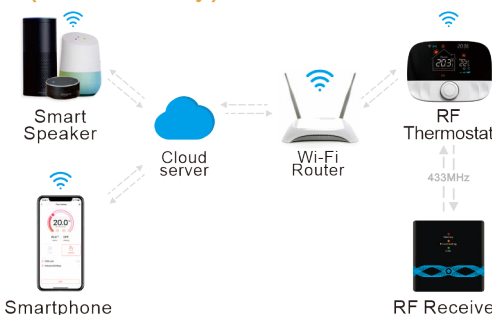


◆ Pairing steps

③ When the receiver's buzzer beeps once, and the power light "⊗" + the green light "⊗" are always on, the pairing is successful.

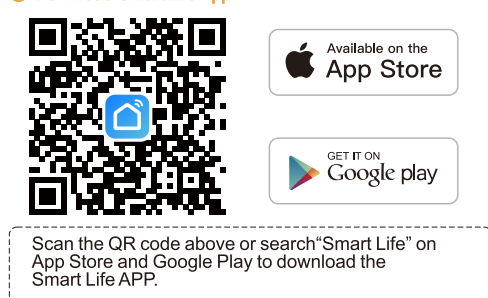


◆ APP Remote Control And Voice Control (Wi-Fi version only)

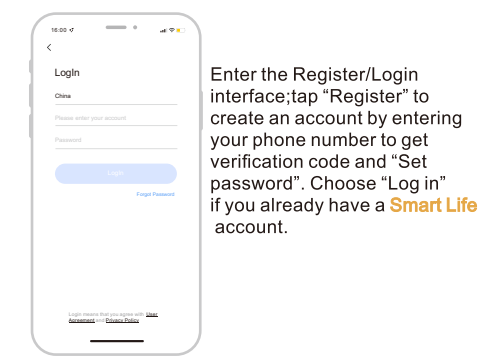


◆ Preparation for Use (Wi-Fi version only)

① Download Smart Life APP

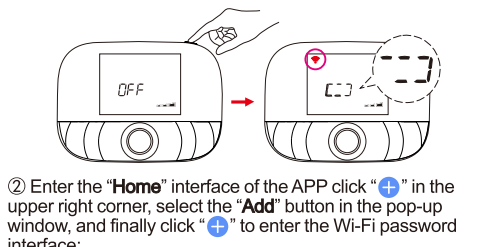


② Registration or Log in



◆ Wi-Fi setting (Wi-Fi version only)

① In the OFF state, long press the "power button" for 3 seconds, when the screen flashes "⊗" and "⊗", the thermostat Enter the state of distribution network;



- ② Enter the "Home" interface of the APP click "+" in the upper right corner, select the "Add" button in the pop-up window, and finally click "+" to enter the Wi-Fi password interface;
- ③ Select 2.4G Wi-Fi and enter the password, click "Next", and then wait for the connection to succeed.
- ④ After the addition is successful, click "Done", and the Wi-Fi smart thermostat has been added successfully.



◆ Voice control (Wi-Fi version only)

After waking up the speaker, you can say:

- Amazon Alexa : Alexa,**
- * Turn on the HEATER
 - * Turn off the HEATER.
 - * Make the HEATER cooler in here.
 - * Make the HEATER warmer in here.
 - * What is the temperature of the HEATER?
 - * Turn on child lock for the HEATER
 - * Turn off child lock for the HEATER

Google Assistant : OK google,

- * Turn on the HEATER
- * Turn off the HEATER.
- * Set the HEATER to 26 degree
- * Drop the HEATER by 1 degree
- * Raise the HEATER by 1 degree
- * Turn on child lock for the HEATER
- * Turn off child lock for the HEATER

*Attention:

"HEATER" is the device name, you can also name it yourself. The temperature unit of thermostat and smart speaker must be identical.