

User Manual MINI-RBS (EN)



Smart Roller Shutter Switch

User Manual V1.1

Introduction

This compact smart curtain retrofit is designed to fit perfectly into an EU-type mounting box and supports motors with a maximum current of 1A as a load. It offers WiFi remote control and is compatible with the Matter platform, enabling seamless integration across multiple smart home systems. Simply connect the device to the switch and motor correctly to easily upgrade ordinary electric roller shutters to smart systems.



Remote Control



Percentage Control



Timer Schedule



Deviation Calibration



Voice Control



eWeLink Remote



Smart Scene



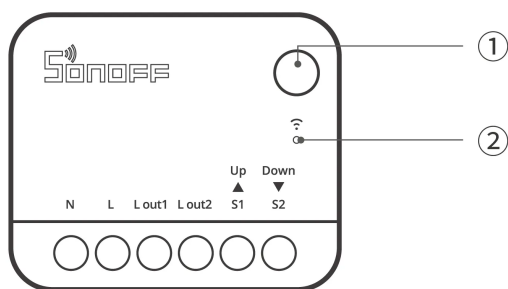
Direction Reverse

① Button

- Press and hold for 5 seconds: Device enters the pairing mode. (Pairing time 10 minutes)
- Short press three times: Switch the external switch type.

② LED indicator (Blue)

- Keeps on: Online.
- Flashes once: Offline
- Flashes twice: LAN
- Flashes two short and one long: Device is in pairing mode.
- Breathing mode (press and hold the button for 10 seconds): The device successfully marks the "fully open" position of the curtain.
- Flashes three times (short press the button once while in breathing mode): The device successfully marks the curtain in the "fully closed" position.
- Flashes three times: The switch type is successfully switched.



Matter-compatible Ecosystem

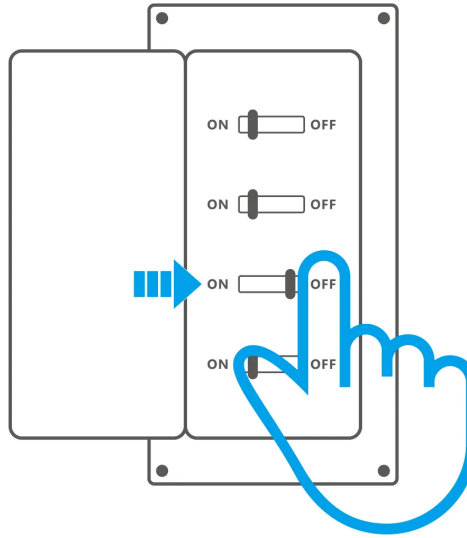


Specification

Model	MINI-RBS
MCU	ESP32
Rating	100–240V~ 50/60Hz 1A Max (M)
Wireless connectivity	Wi-Fi IEEE 802.11 b/g/n 2.4GHz
Net weight	25.1g
Product dimension	39.5x33x16.8mm
Color	White
Casing material	PC
Applicable place	Indoor
Working temperature	10T40 (–10°C~40°C)
Working humidity	5–95%RH, non–condensing
Working height	Less than 2000m
Certification	CE/FCC/RoHS
FCC ID	2APN5–MINIRBS
Pollution degree	2
Rated impulse voltage	4kV
Automatic action	10000 Cycles
Control type	Type 1.B
Diameter of wiring(recommend):	18AWG to 14AWG SOL/STR copper conductor only

Installation

1. Power off



WARNING

Please install and maintain the device by a professional electrician. To avoid electric shock hazards, do not operate any connection or contact the terminal connector while the device is powered on!

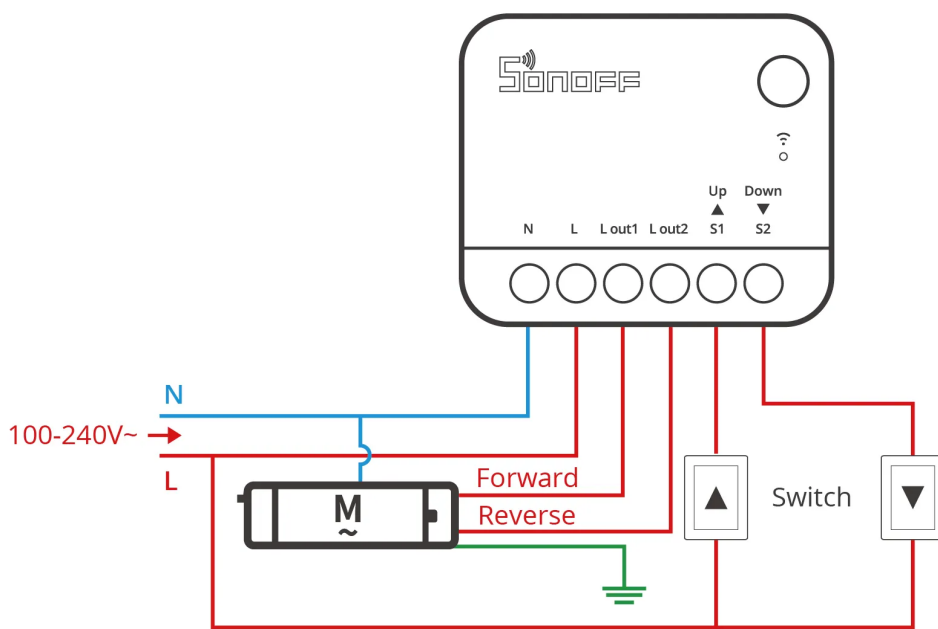
2. Wiring instructions

To ensure the safety of your electrical installation, it's essential that either a Miniature Circuit Breaker (MCB) or a Residual Current operated Circuit-breaker with Integral Overcurrent protection(RCBO) with an electrical rating of 1A has been installed before the MINI-RBS.

Momentary Switch Wiring:

ITEAD - 黎业军

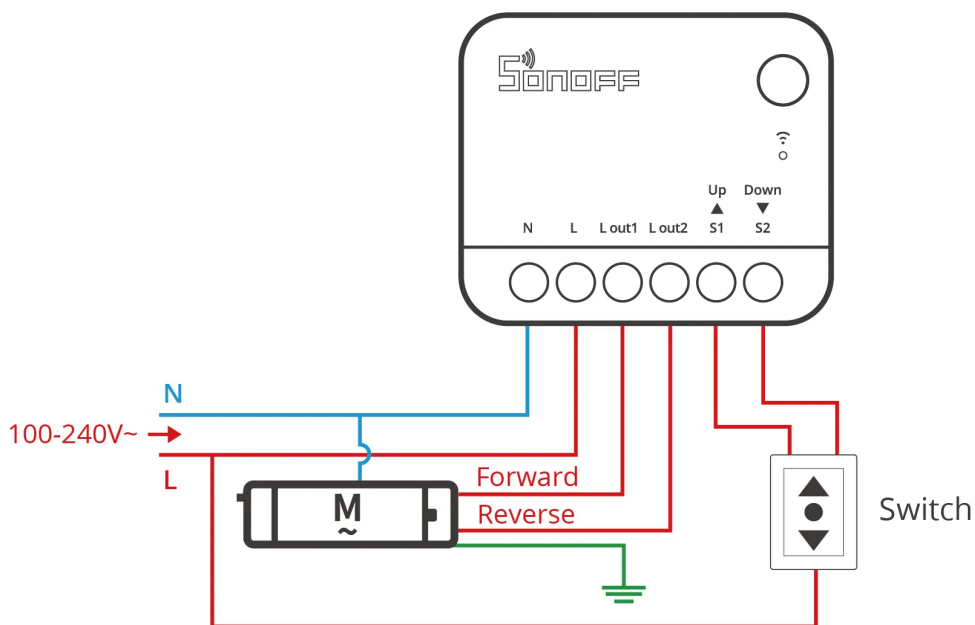
ITEAD - 黎业军



Three-Position Rocker Switch Wiring:

ITEAD - 黎业军(2602432)

ITEAD - 黎业军(2602432)



ITEAD - 黎业军

ITEAD - 黎业军

*Make sure all wires are connected correctly.

Instructions for wiring symbols

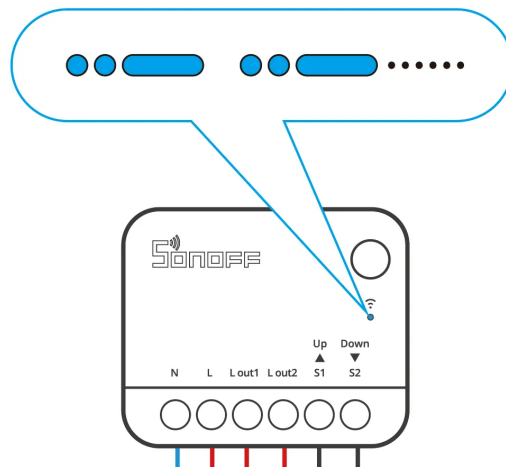
2602432)

2602432)

Terminals		Wires	
N	Neutral Line	N	Neutral Line
L	Live Line	L	Live Line (100~240V)
L out1	Live Output Terminal__1(100~240V)	Forward Line	Motor Forward Line
L out2	Live Output Terminal__2(100~240V)	Reverse Line	Motor Reverse Line
S1	Switch_1 (Forward Control)		
S2	Switch_2 (Reverse Control)		

3. Power on

When the device is used for the first time, it will enter pairing mode by default after being powered on. At this time, the LED indicator will flash in a pattern of "two short and one long".



*The device will exit the Pairing Mode if not paired within 10mins. If you want to enter this mode, please long-press button for about 5s until the LED indicator changes in a cycle of two short and one long flash and release.

*As the maximum one-way allowable continuous operation time for the motor in this

device is 2mins, please pause the operation before the curtain reaches its limit position to avoid damaging the motor.

Check the Device Status

1. External switch type

- ① The types of external switches supported are three-position rocker switches and momentary switches, with the default setting from the factory being the rocker switch (Edge Mode).
- ② The method to switch the external switch type: Short-press the button three times and the blue light flashes 3 times, then the switch type is switched successfully.
- ③ External switch trigger mode switching sequence (cycle): Edge Mode → Pulse Mode → Following Mode

2. Roller shutter direction test

Press the external switch to check if the roller shutter moves in the correct direction. If it does not, power off the device, swap the Lout1 and Lout2 wires, and test again.



Important Prerequisite Confirmation:

Please select the appropriate section based on the ecosystem you are using (Matter or eWeLink). Follow the corresponding steps to complete the "Add Device" and "Travel Calibration" operations.

Matter Ecosystem User Guide

1. Add Device

Open a Matter-compatible App to scan the Matter QR code on the Quick Guide or the device itself to add the device.



Add to Apple via
Matter



Add to Google via
Matter



Add to Alexa via
Matter



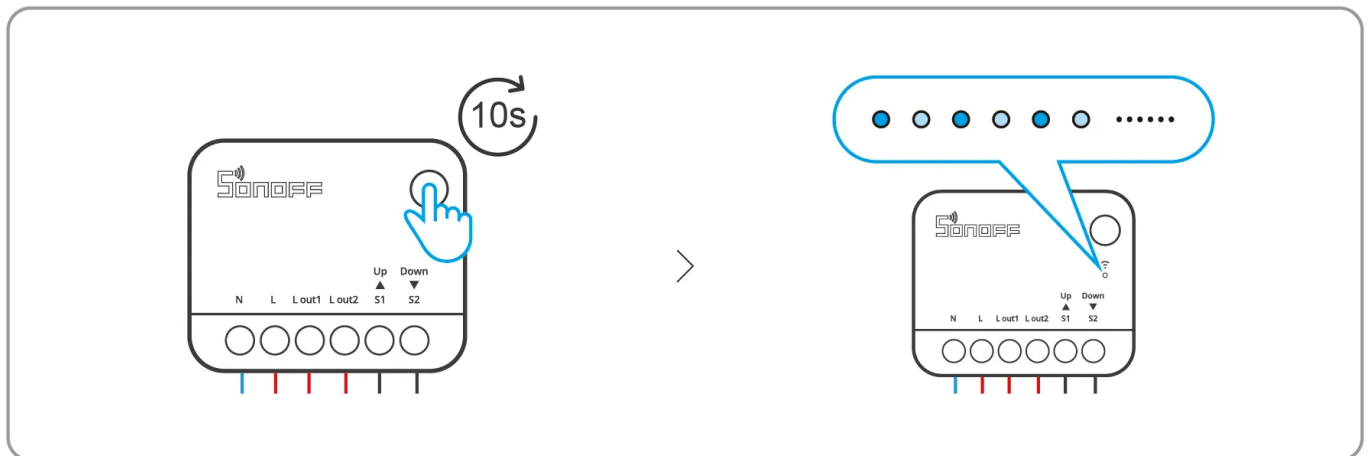
Add to SmartThings
via Matter

2. Travel Calibration

⚠ Using percentage control requires travel calibration. Please select one of the following two calibration options based on your needs.

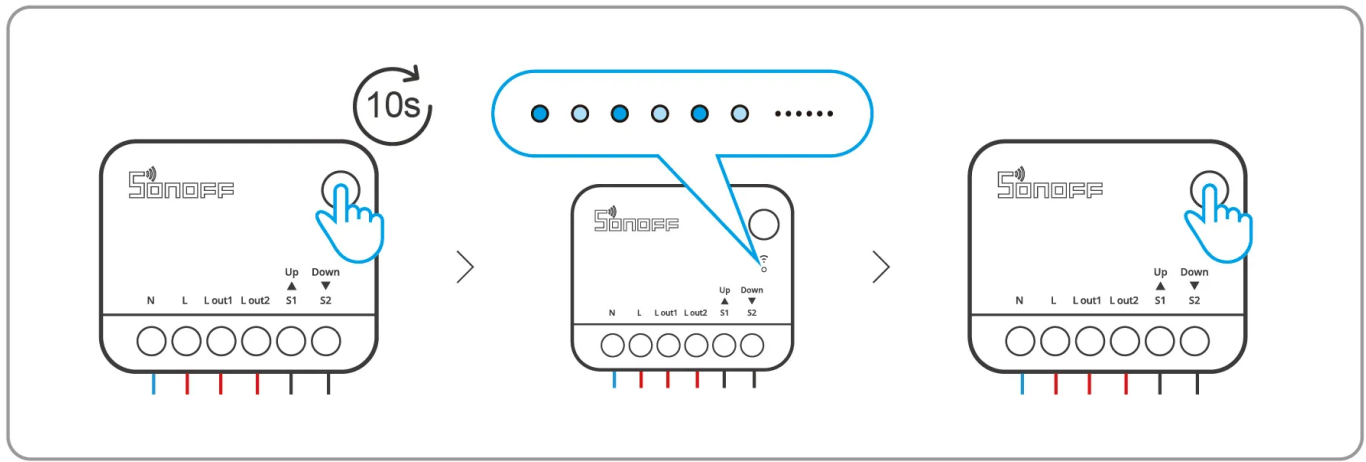
Method 1: Automatic calibration

① Press and hold the device button for more than 10 seconds until the LED indicator enters breathing mode. The device will then automatically control the motor for calibration.

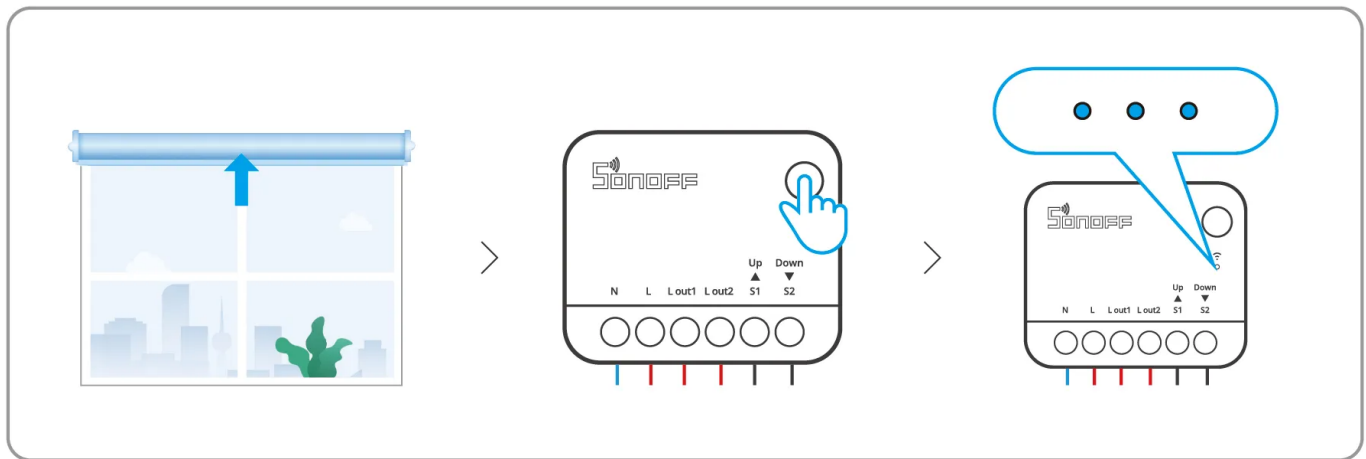


Method 2: Manual calibration

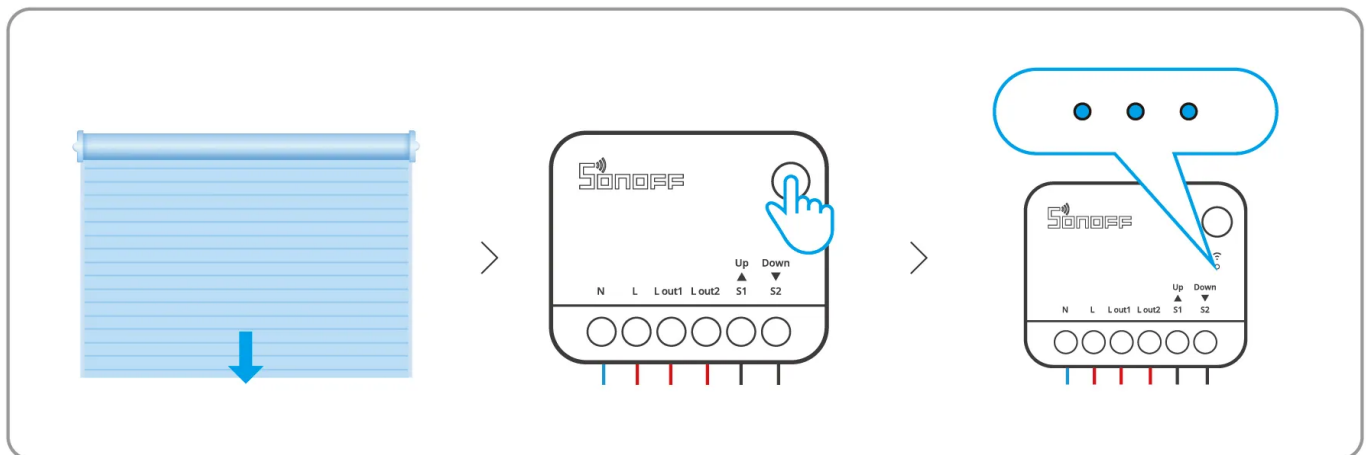
① Press and hold the device button for more than 10 seconds until the LED indicator enters breathing mode. Then, briefly press the device button to enter "Manual Calibration" mode.



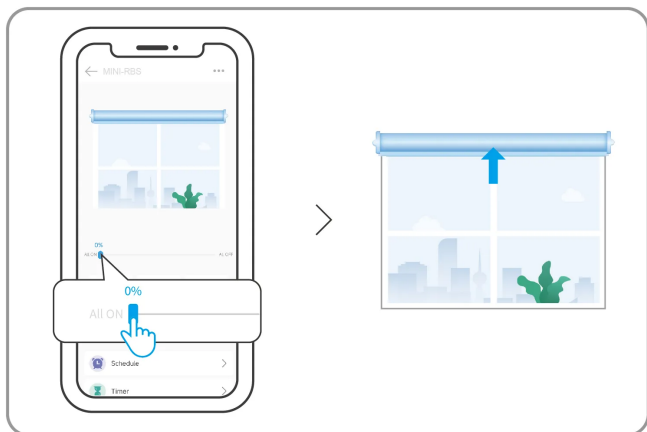
② Manually open the curtains completely, then briefly press the device button until the LED indicator flashes three times.



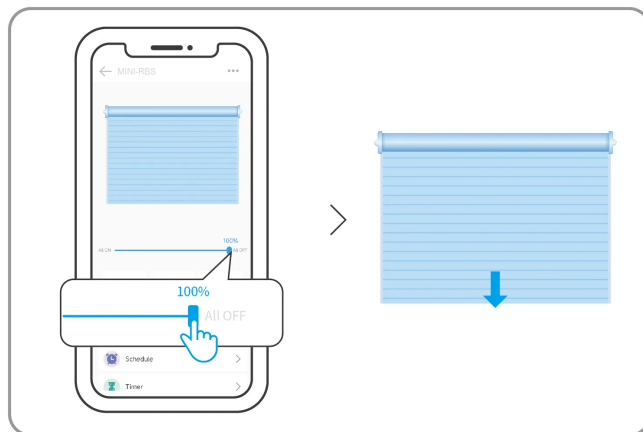
③ Wait for the device to automatically close the curtains, then briefly press the device button again until the LED indicator flashes three times. This completes the "Manual Calibration."



④ Control the device through the App and check the fully open or fully closed positions. If there is any discrepancy, you can recalibrate.



fully open



fully closed

eWeLink Ecosystem User Guide

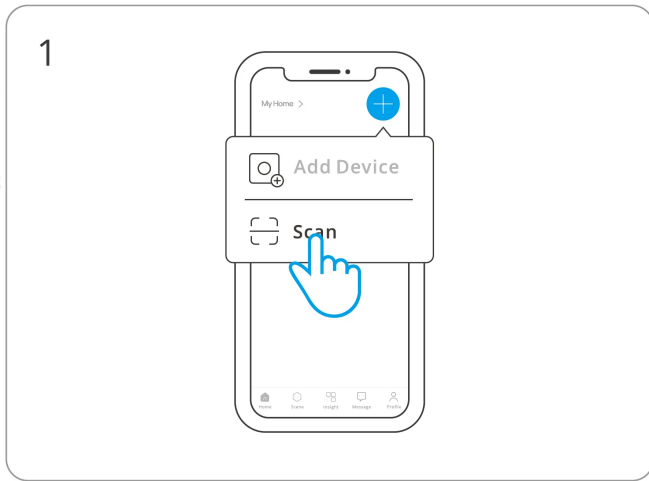
1. Add Device

① Download the eWeLink App

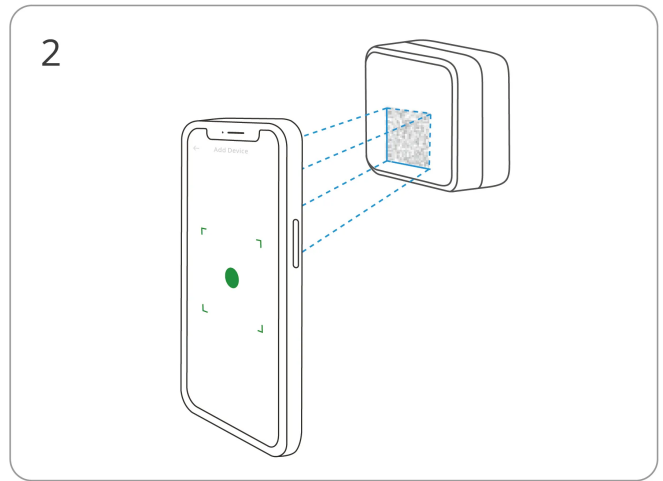
Please download the "eWeLink" App from Google Play Store or Apple App Store.



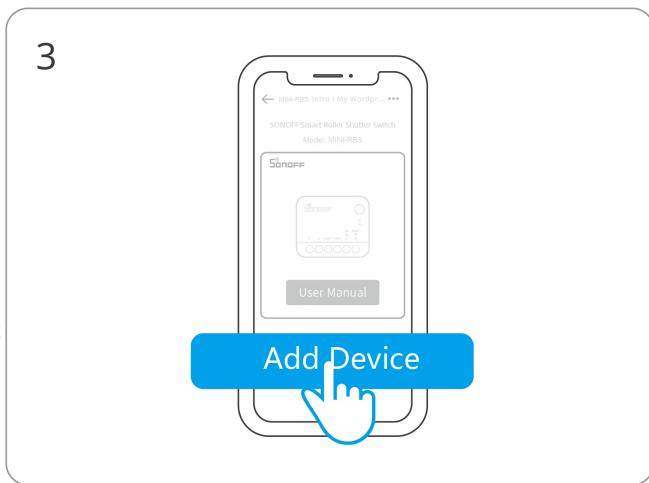
② Scan QR code to add the device



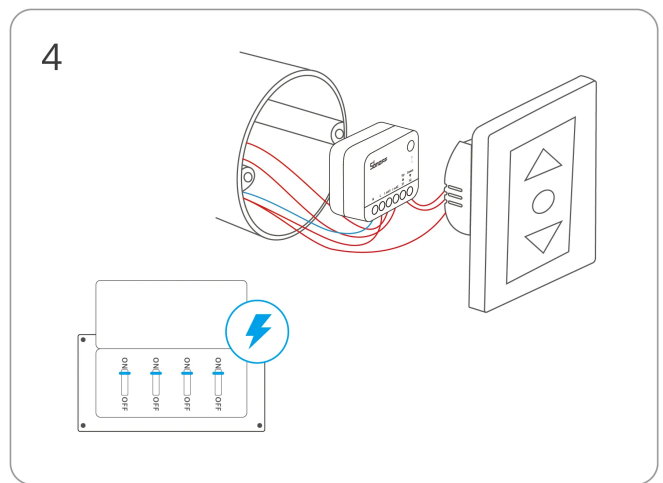
Enter "Scan"



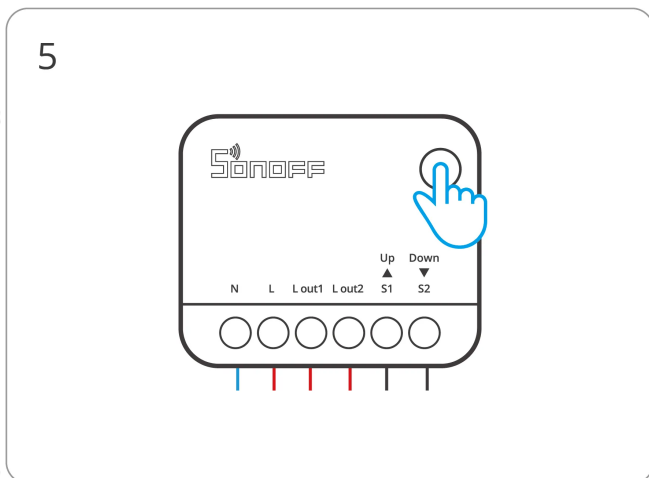
Scan the QR code on the device



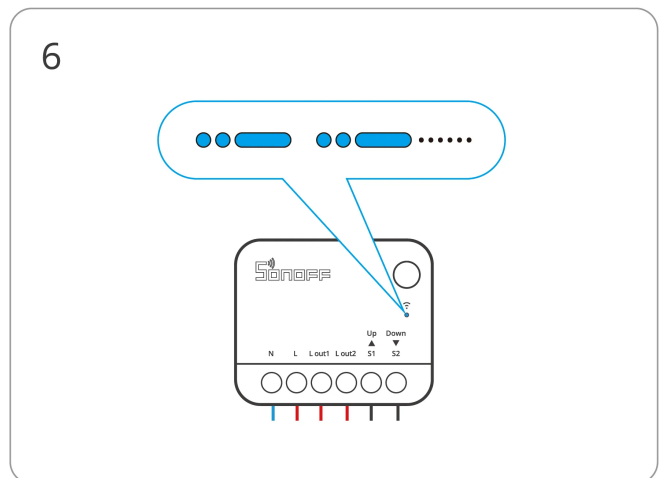
Select "Add Device"



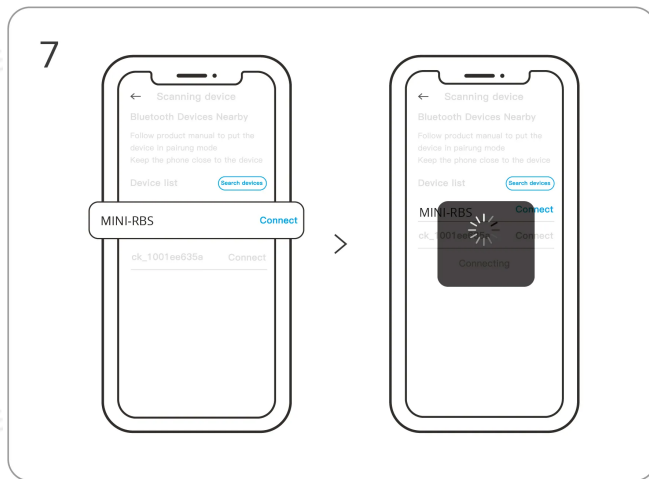
Power on the device



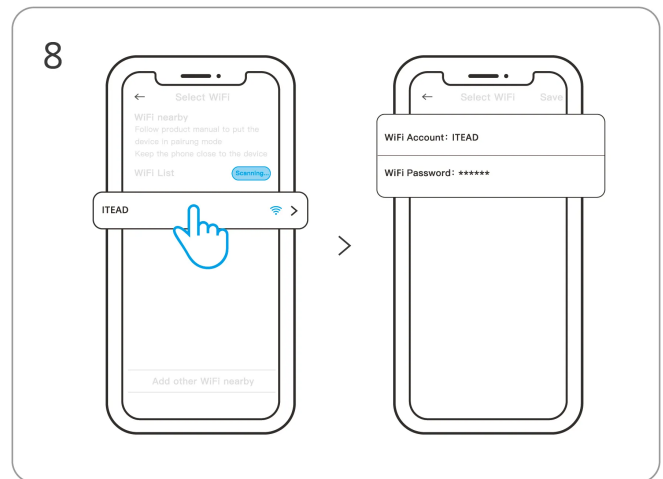
Long press the button for 5 seconds



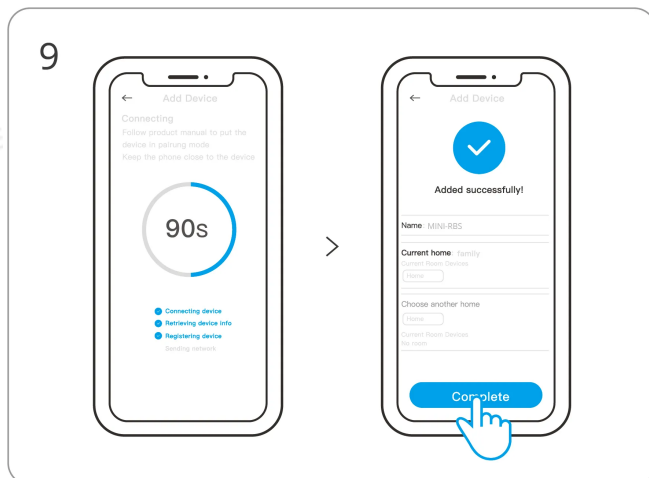
Check Wi-Fi LED indicator flashing status
(Two short and one long)



Search for the device and start connecting



Select the "Wi-Fi" network and
enter the password



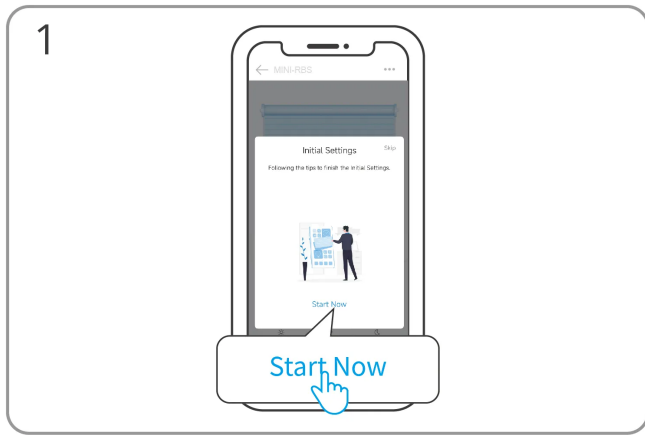
Device "Added completely"

2. Travel Calibration

⚠ Using percentage control requires travel calibration. Please select one of the following two calibration options based on your needs.

Users can use the "Travel Calibration" pop-up window in the eWeLink App, or open the "Initial Settings" on the device settings page and then perform "Automatic Calibration" or "Manual Calibration" according to the text instructions in the App.

Method 1:Automatic calibration

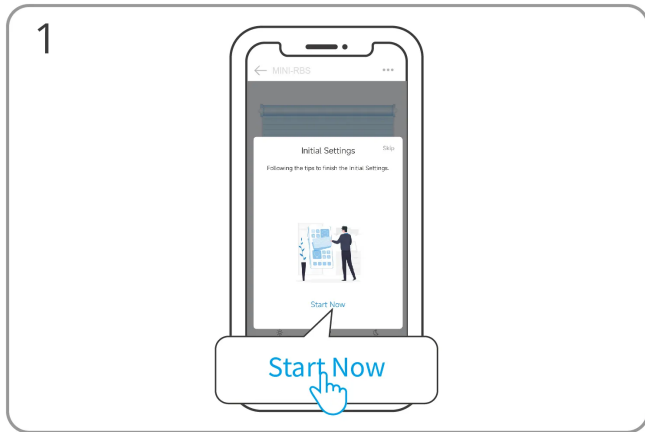


Click "Start Now"

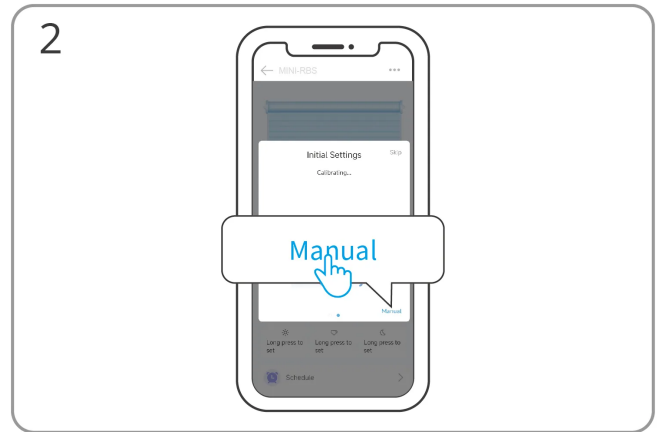


Wait for the automatic calibration to complete

Method 2: Manual calibration



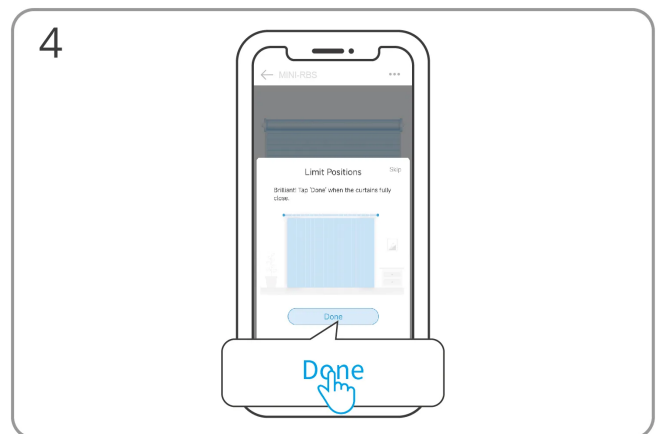
Click "Start Now"



Click "Manual"

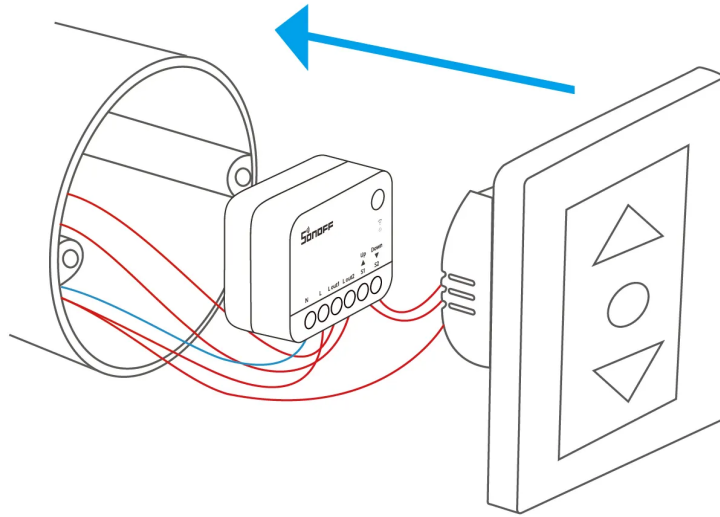


Select "Next" to mark the "fully open" position



Select "Done" to mark the "fully close" position

Install the Device in the Mounting Box



Factory Reset

Reset the device to factory settings by "Delete device" in the eWeLink App.

FCC compliance statement

1. This device complies with part 15 of the FCC Rules. Operation is subject to the following two conditions:

- (1) This device may not cause harmful interference, and
- (2) This device must accept any interference received, including interference that may cause undesired operation.

2. Changes or modifications not expressly approved by the party responsible for compliance could void the user's authority to operate the equipment.

Note: This equipment has been tested and found to comply with the limits for a Class B digital device, pursuant to part 15 of the FCC Rules. These limits are designed to provide reasonable protection against harmful interference in a residential installation. This equipment generates, uses and can radiate radio frequency energy and, if not installed and used in accordance with the instructions, may cause harmful interference to radio communications. However, there is no guarantee that interference will not occur in a particular installation. If this equipment does cause harmful interference to radio or television reception, which can be determined by turning the equipment off and on, the user is encouraged to try to correct the interference by one or more of the following measures:

- Reorient or relocate the receiving antenna.
- Increase the separation between the equipment and receiver.
- Connect the equipment into an outlet on a circuit different from that to which the receiver is connected.
- Consult the dealer or an experienced radio/TV technician for help.

FCC Radiation Exposure statement:

This equipment complies with FCC radiation exposure limits set forth for an uncontrolled environment.

This equipment should be installed and operated with minimum distance of 20 cm between the radiator and your body.

This transmitter must not be co-located or operating in conjunction with any other antenna or transmitter.

EU Declaration of Conformity

Hereby, Shenzhen Sonoff Technologies Co., Ltd. declares that the radio equipment type MINI-RBS is in compliance with Directive 2014/53/EU. The full text of the EU declaration of conformity is available at the following internet address:

<https://sonoff.tech/compliance/>

For CE frequency

EU Operating Frequency Range

Wi-Fi: 802.11 b/g/n20 2412–2472 MHz, 802.11 n40: 2422–2462 MHz

BLE: 2402–2480 MHz

EU Output Power

Wi-Fi 2.4G \leq 20dBm

BLE \leq 10dBm

WEEE Disposal and Recycling Information



WEEE Disposal and Recycling Information All products bearing this symbol are waste electrical and electronic equipment (WEEE as in directive 2012/19/EU) which should not be mixed with unsorted household waste. Instead, you should protect human health and the environment by handing over your waste equipment to a designated collection point for the recycling of waste electrical and electronic equipment, appointed by the government or local authorities. Correct disposal and recycling will help prevent potential negative consequences to the environment and human health. Please contact the installer or local authorities for more information about the location as well as terms and conditions of such collection points.

Warning

Under normal use of condition, this equipment should be kept a separation distance of at least 20 cm between the antenna and the body of the user.

Dans des conditions normales d' utilisation, cet équipement doit être maintenu à une distance d' au moins 20 cm entre l' antenne et le corps de l' utilisateur.

Scatola	Manuale
PAP 21	PAP 22
Carta	Carta

RACCOLTA DIFFERENZIATA

Verifica le disposizioni del tuo Comune.

Separa le componenti e conferiscile in modo corretto.

SONOFF

Manufacturer: Shenzhen Sonoff Technologies Co., Ltd.

Address: 3F & 6F, Bldg A, No. 663, Bulong Rd, Shenzhen, Guangdong, China

ZIP code: 518000

Service email: support@itead.cc

Website: sonoff.tech

Made in China



Points de collecte sur www.quefairedemesdechets.fr
Privilégiez la réparation ou le don de votre appareil !

