

User Manual BASIC-1GSP (EN)



Matter over Wi-Fi Smart Switch

User Manual V1.0

Introduction

The BASIC-1GSP is a **single-channel smart metering switch designed for DIN rail mounting**. It is installed directly behind the **miniature circuit breaker (MCB)** in a domestic distribution board to provide safe control and smart management of a single circuit. The device supports core functions such as **remote switching, energy consumption monitoring and overload protection**, enabling users to gain a precise understanding of their electricity usage and to manage and optimise energy consumption remotely via an app or automation systems.



Remote Control



Energy Monitoring



Overload Protection



Energy Saving



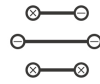
Matter Compatibility



Smart Scene



Timer Schedule



Power-on State

① Button

- Single press: Turn on/off the smart device.
- Press and hold for 5 seconds: Device enters the pairing mode. (Pairing time 10 minutes)
- Short press in pairing mode: Exit pairing mode.

② On/Off indicator light (Red)

- Red light on: Relay closed.
- Red light off: Relay open.

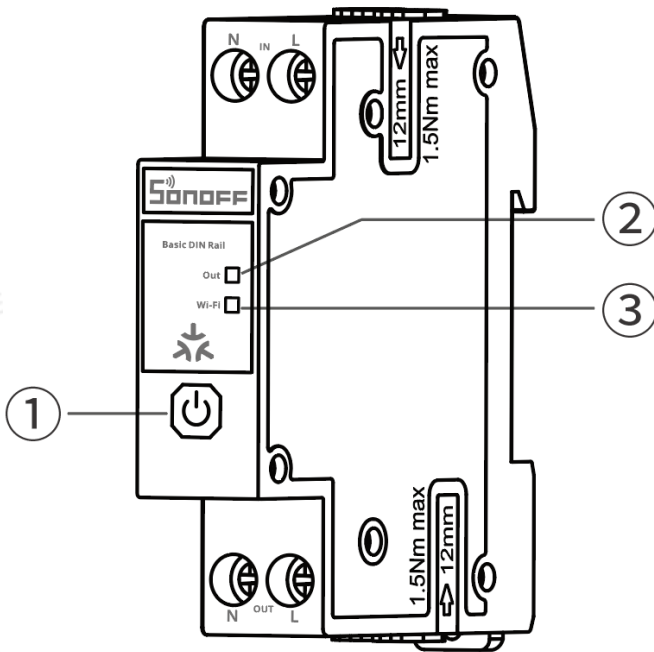
③ Network indicator light (Blue)

eWeLink Mode

- Flashes two short and one long: Device is in pairing mode.
- Keeps on: Device is online.
- Flashes once: Offline
- Flashes twice: Device is connected to the router but not to the cloud.

Matter Mode

- Flashes two short and one long: Device is in pairing mode.
- Keeps on: Device is online.
- Flashes once: Offline
- Flashes triple: Device is identifying on the Matter network.



Platform Certification

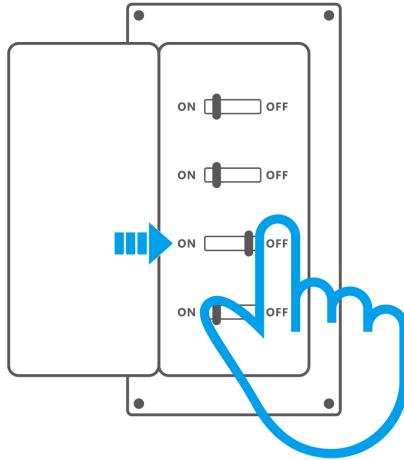


Specification

Basic DIN Rail (Matter over Wi-Fi Version)	
Product series	Basic Series
Product name	Matter over Wi-Fi Smart Switch
Model	BASIC-1GSP
MCU	BK7238
Rating	100-240V~ 50/60Hz 32A Max
Wi-Fi	IEEE 802.11b/g/n 2.4GHz
Net weight	92.1g
Product dimensions	84 x 66.5 x 18 mm
Color	White
Casing material	PC
Recommended wire gauge range	For 11 AWG to 6 AWG (4mm ² to 10 mm ²) SOL/STR copper conductors only
Applicable place	Indoor
Operating temperature	15T50 (-15°C~50°C)
Operating humidity	10% ~ 90% RH, non-condensing
Pollution degree	II
Rated impulse voltage	4KV
Automatic action	10000 Cycles
Control Type	1.B
Operating altitude	2000m
FCC ID	2APN5-BASIC1GSP
Product certifications	CE/RoHS/FCC/CP65

Installation

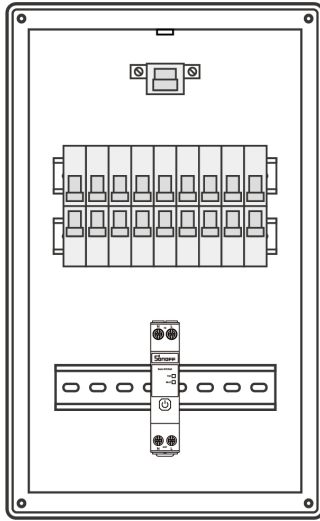
1. Power off



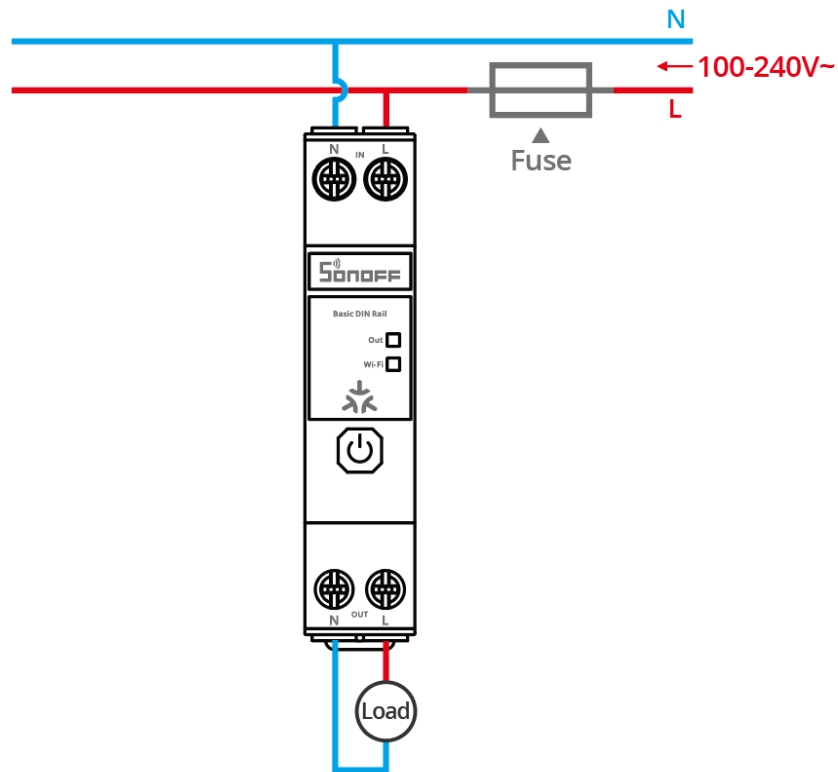
WARNING

- ① Please install and maintain the device by a professional electrician. To avoid electric shock hazards, do not operate any connection or contact the terminal connector while the device is powered on!
- ② To ensure electrical installation safety, a miniature circuit breaker (MCB) or residual current circuit breaker with overcurrent protection (RCBO) rated at 32A and compliant with national safety standards must be installed upstream of the BASIC-1GSP.
- ③ For single-phase use only (100–240V~). Connecting to a multi-phase power supply may cause damage to the device.

2. Install the device inside the electrical distribution box



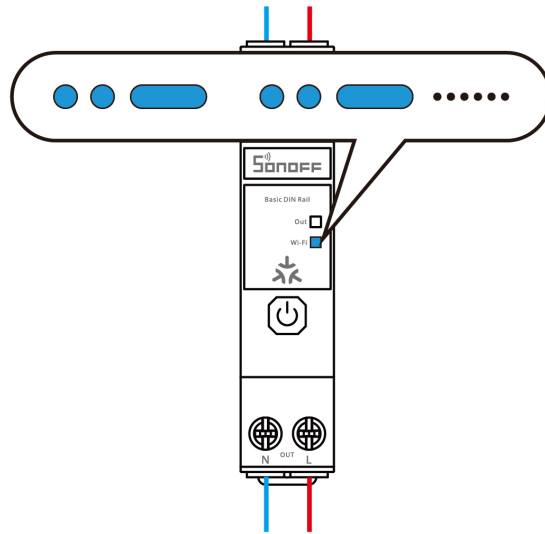
3. Wiring Instruction



- ⊕ Do not reverse the N and L terminals, as this may damage the device and cause danger.
- ⊕ Ensure all wiring connections are correct.

4. Power on

When the device is used for the first time, it will enter pairing mode by default after being powered on. At this time, the LED indicator will flash in a pattern of "two short and one long".



⚠ The device will exit the Pairing Mode if not paired within 10mins. If you want to enter this mode, please long-press the button for about 5s until the LED indicator changes in a cycle of two short and one long flash and release.

Matter Ecosystem User Guide

Open a Matter-compatible App to scan the Matter QR code on the Quick Guide or the device itself to add the device.



Add to Apple via
Matter



Add to Google via
Matter



Add to Alexa via
Matter



Add to SmartThings
via Matter

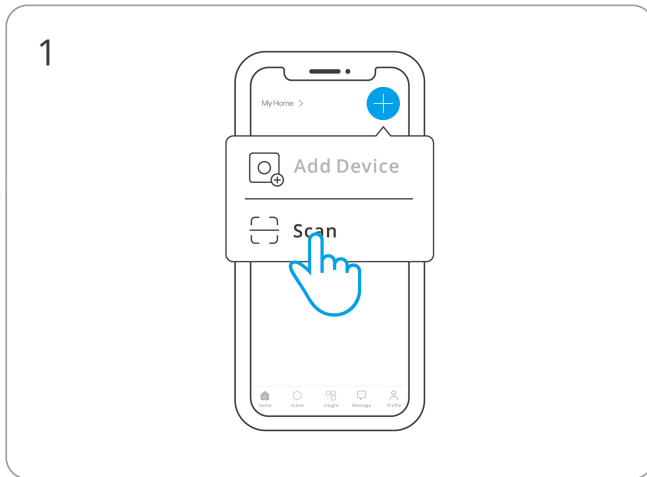
eWeLink Ecosystem User Guide

① Download the eWeLink App

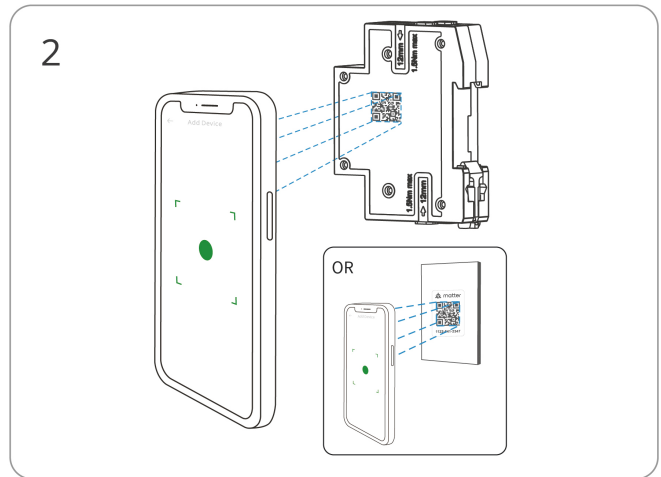
Please download the "eWeLink" App from Google Play Store or Apple App Store.



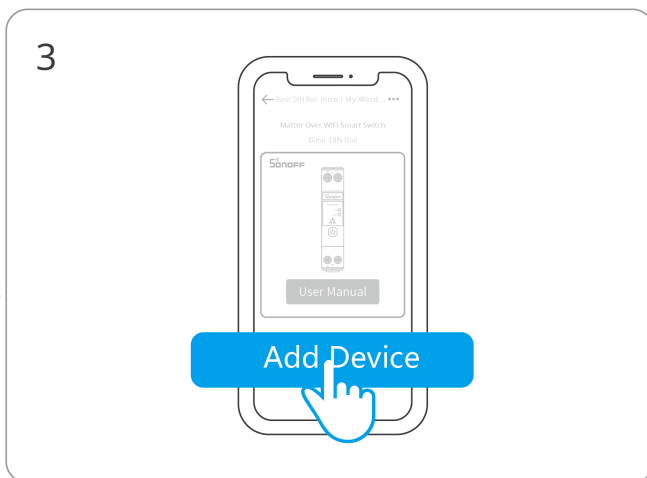
② Add Device



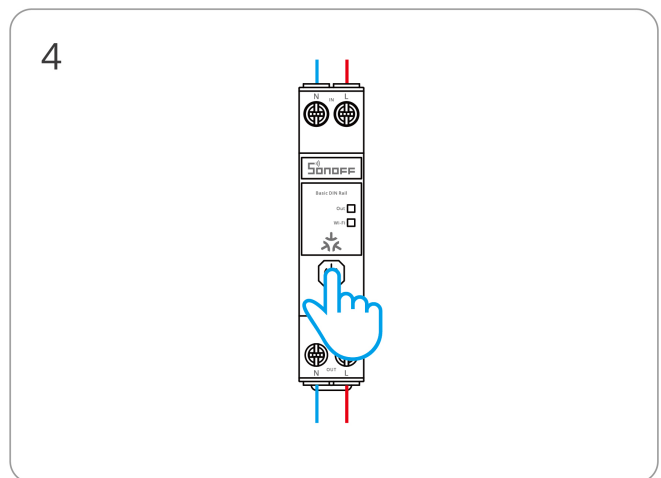
Enter "Scan"



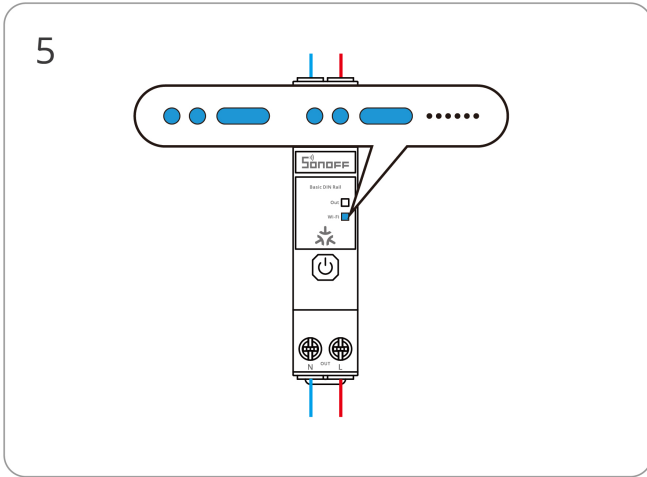
Scan the QR code on the quick guide or the device



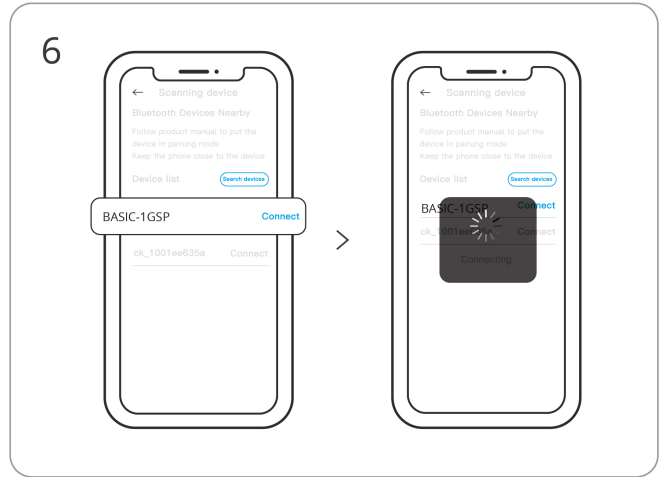
Select "Add Device"



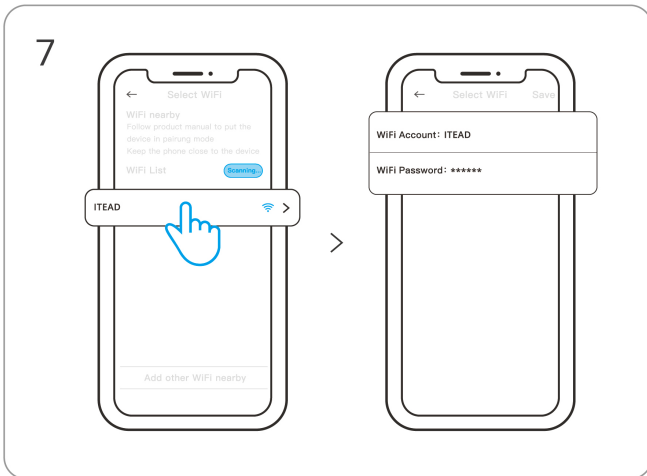
(If the device exits pairing mode)
Long press the button for 5 seconds



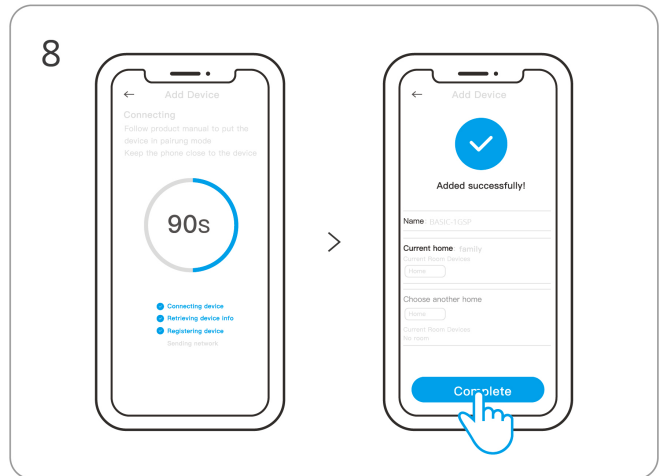
5 Check LED indicator flashing status
(Two short and one long)



6 Search for the device and start connecting



7 Select the "Wi-Fi" network and enter the password



8 Device "Added completely"

Factory Reset

Trigger conditions (any one condition met)

- Delete the device on the eWeLink App.
- The device that has been successfully paired can be paired again with another eWeLink account to add it.

FCC compliance statement

Responsible Party Name: SONOFF TECHNOLOGY LLC

Address: 14777 NE 40th St, Suite 201 Bellevue, WA 98007

Email Address: usres@itead.cc FCC ID: 2APN5-BASIC1GSP

1. This device complies with part 15 of the FCC Rules. Operation is subject to the following two conditions:

(1) This device may not cause harmful interference, and

(2) This device must accept any interference received, including interference that may cause undesired operation.

2. Changes or modifications not expressly approved by the party responsible for compliance could void the user's authority to operate the equipment.

Note: This equipment has been tested and found to comply with the limits for a Class B digital device, pursuant to part 15 of the FCC Rules. These limits are designed to provide reasonable protection against harmful interference in a residential installation. This equipment generates, uses and can radiate radio frequency energy and, if not installed and used in accordance with the instructions, may cause harmful interference to radio communications. However, there is no guarantee that interference will not occur in a particular installation. If this equipment does cause harmful interference to radio or television reception, which can be determined by turning the equipment off and on, the user is encouraged to try to correct the interference by one or more of the following measures:

—Reorient or relocate the receiving antenna.

—Increase the separation between the equipment and receiver.

—Connect the equipment into an outlet on a circuit different from that to which the receiver is connected.

—Consult the dealer or an experienced radio/TV technician for help.

FCC Radiation Exposure statement:

This equipment complies with FCC radiation exposure limits set forth for an uncontrolled environment.

This equipment should be installed and operated with a minimum distance of 20 cm between the radiator and your body.

This transmitter must not be co-located or operating in conjunction with any other antenna or transmitter.

EU Declaration of Conformity

Hereby, Shenzhen Sonoff Technologies Co., Ltd. declares that the radio equipment type BASIC-1GSP is in compliance with Directive 2014/53/EU. The full text of the EU declaration of conformity is available at the following internet address:

<https://sonoff.tech/compliance/>

For CE Frequency

EU Operating Frequency Range:

Wi-Fi: 802.11 b/g/n20 2412–2472 MHz

BLE: 2402–2480 MHz

EU Output Power:

Wi-Fi 2.4G \leq 20dBm

BLE \leq 10dBm

Under normal use of condition, this equipment should be kept a separation distance of at least 20 cm between the antenna and the body of the user.

WEEE Disposal and Recycling Information



WEEE Disposal and Recycling Information All products bearing this symbol are waste electrical and electronic equipment (WEEE as in directive 2012/19/EU) which should not be mixed with unsorted household waste. Instead, you should protect human health and the environment by handing over your waste equipment to a designated collection point for the recycling of waste electrical and electronic equipment, appointed by the government or local authorities. Correct disposal and recycling will help prevent potential negative consequences to the environment and human health. Please contact the installer or local authorities for more information about the location as well as terms and conditions of such collection points.

PAP 21	PAP 22
Carta	Carta
RACCOLTA DIFFERENZIATA	
Verifica le disposizioni del tuo Comune.	
Separa le componenti e conferiscile in modo corretto.	

SONOFF

Manufacturer: Shenzhen Sonoff Technologies Co., Ltd.

Address: 3F & 6F, Bldg A, No. 663, Bulong Rd, Shenzhen, Guangdong, 518000, China

Service email: support@itead.cc Website: sonoff.tech

Made in China



Points de collecte sur www.quefairedemesdechets.fr
 Privilégiez la réparation ou le don de votre appareil !

