

User Manual CAM-B1P (EN)



Outdoor Smart Security Camera

User Manual V1.0

Introduction

CAM-B1P is a smart Wi-Fi outdoor camera featuring 2K high-definition resolution and full-color night vision, ensuring clear and detailed footage day and night. Its 180° rotating ultra-wide-angle lens offers an extended monitoring range for broader coverage. With AI-powered human detection and intelligent tracking, the camera accurately identifies and follows suspicious targets in real time. It also supports preset position settings, allowing focused monitoring of key areas. Two-way audio enables convenient real-time communication. Designed with an IP65-rated waterproof and dustproof housing, the CAM-B1P performs reliably in various outdoor environments, delivering round-the-clock security in all weather conditions.

2K
HD

2K HD Clarity



Full-color Night
Vision



180° Rotating Ultra-
Wide View



Smart Tracking



AI Human Detection



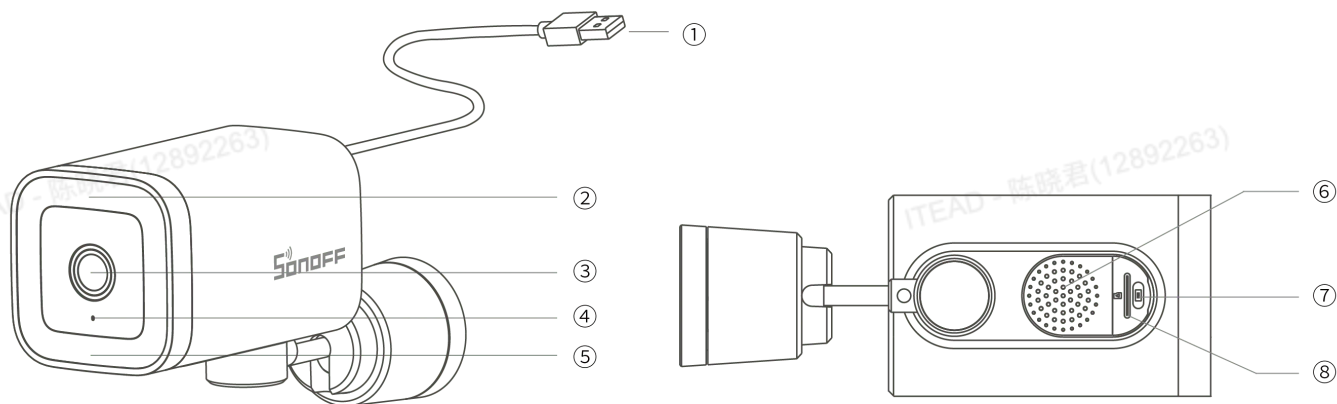
Preset Point Setting



Two-Way Audio



IP65 Waterproof



① USB-A plug	⑤ Fill light
② LED indicator	⑥ Speaker
③ Camera lens	⑦ Reset button <ul style="list-style-type: none"> • Long press the button for 5 seconds (device emits a "beep" sound): The device enters pairing mode (pairing duration: 30 minutes).
④ Microphone	⑧ TF card slot

Instruction of LED Indicator Status

LED indicator status	Status instruction
Flashes two short and one long	Device is in pairing mode (Single press reset button to exit pairing mode).
Keeps on	Online

Keeps off	Device is in sleep mode
Flashes once quickly and lights up strongly at the same time	Device exits the network configuration state after being offline, network exception, or failure to connect to the network.
Flashes twice rapidly	Device detects TF card (device will emit two "beep" sounds).
Flashes once rapidly	Device being watched.

Audio Alerts

Audio Alerts	Device Status
Single "beep" sound (Press and hold reset button for 5 seconds)	Device is in pairing mode.
Double "beep beep" sounds	Device detects TF card.

Compatible Voice Assistants



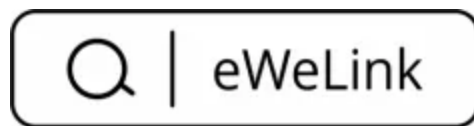
Specification

Model	CAM-B1P
Input	5V $\overline{\text{---}}$ 2A
Interface type	USB-A
Lens aperture	F1.6
Resolution	2K
Rotation angle	Horizontal 180°

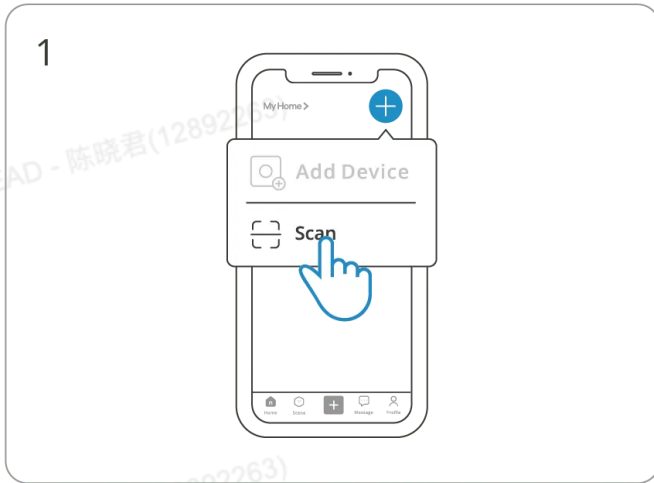
Video compression standard	H.264
Camera lens angle	108°
Storage methods	Cloud storage and TF card (Max.128GB for TF card)
Wireless connection	Wi-Fi IEEE 802.11 b/g/n 2.4GHz
Net weight	282.7g (Accessories not included)
Product dimension	61mm×91mm×161mm
Colour	White
Casing materials	ABS+PC
Applicable place	Outdoor
Working temperature	-20°C~50°C
Working humidity	5%~95% RH, non-condensing
Certification	CE/FCC/RoHS
Waterproof	IP65
FCC ID	2APN5-CAMB1P

Download the eWeLink App

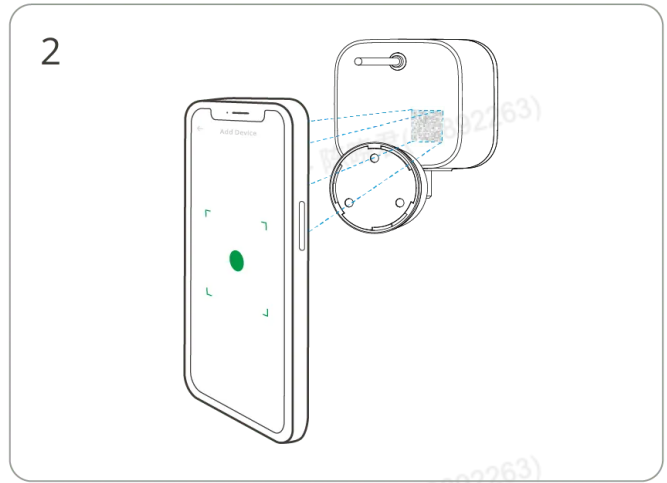
Please download the "eWeLink" app from **Google Play Store** or **Apple App Store**.



Scan QR Code to Add Device



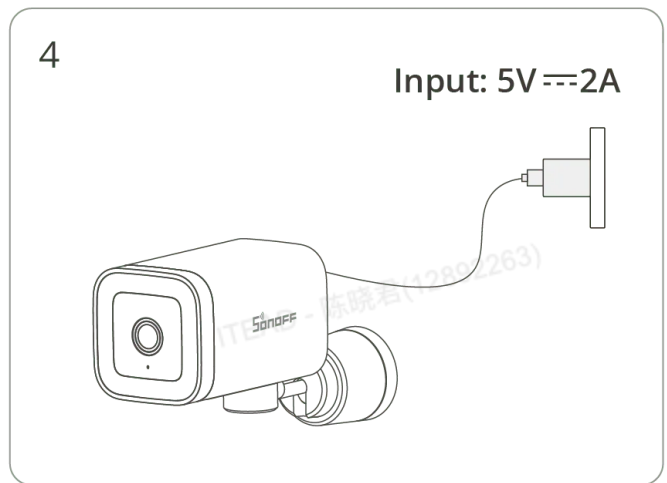
Enter "Scan".



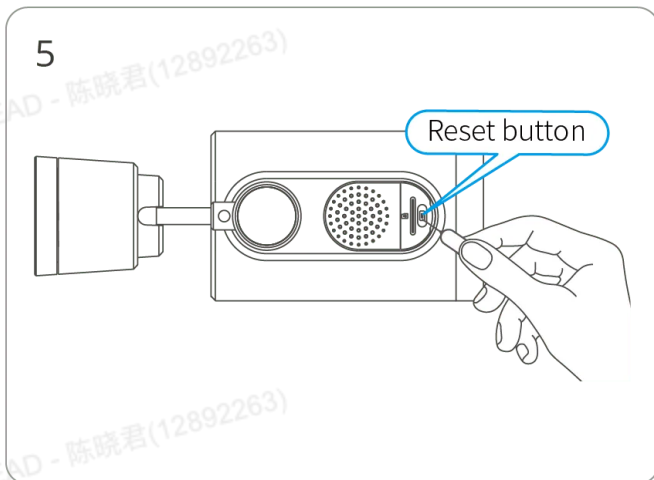
Scan the QR code on the device.



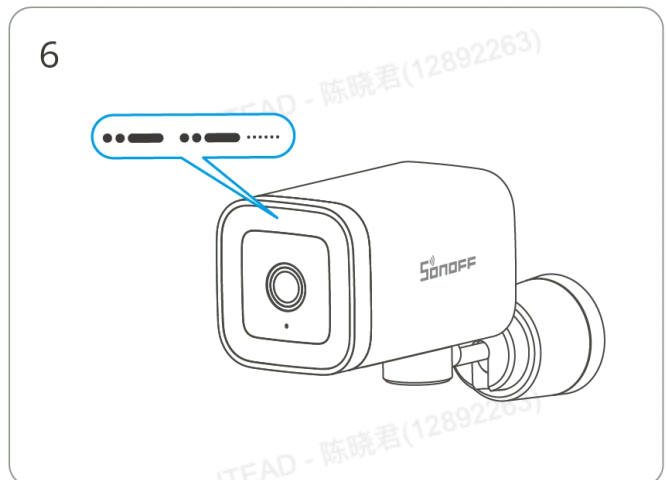
Select "Add Device".



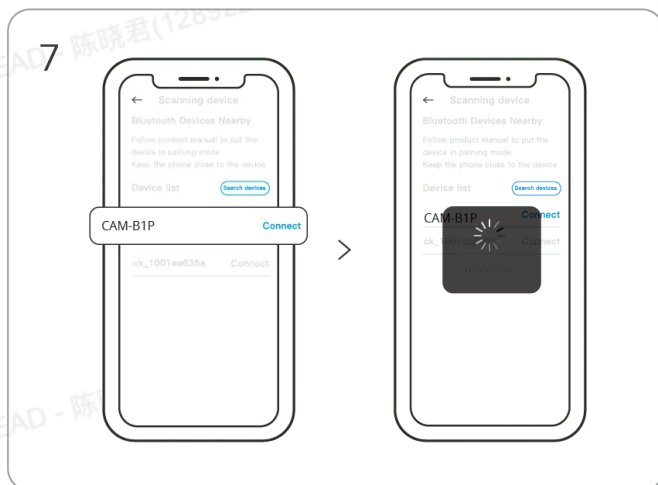
Power on the device.



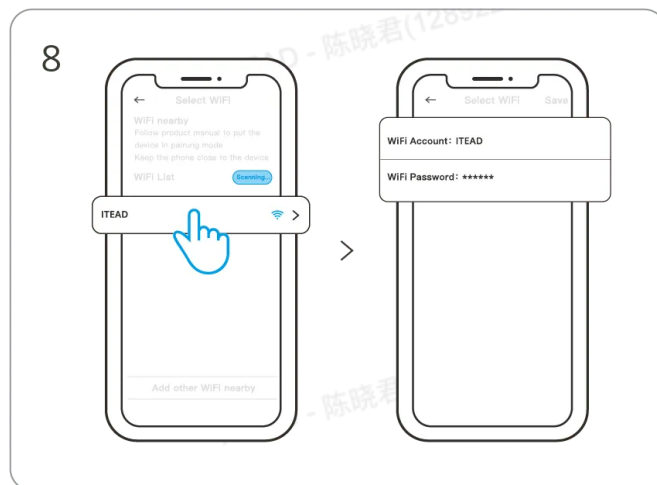
Long press the reset button for 5 seconds.



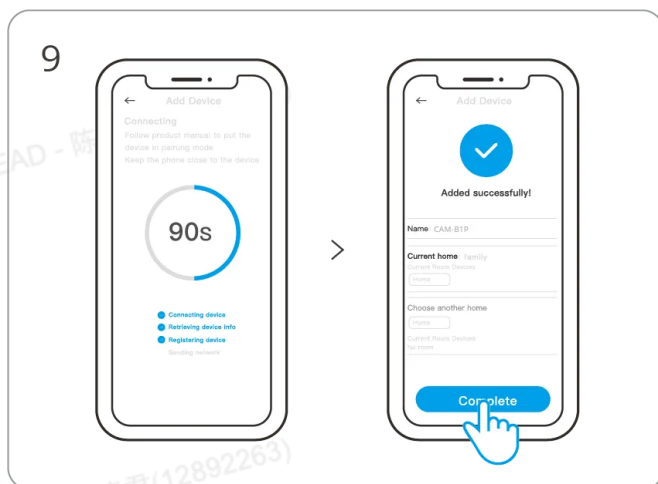
Check Wi-Fi LED indicator flashing status
(Two short and one long flashes).



Wait for the device to be found and connected.

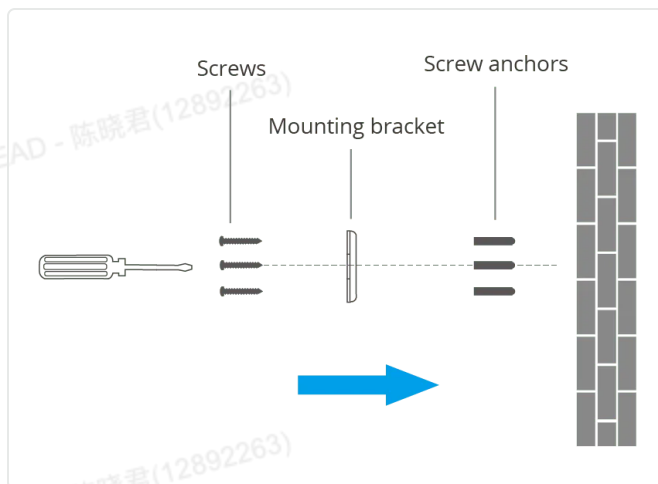


Select the "Wi-Fi" network and enter the password.

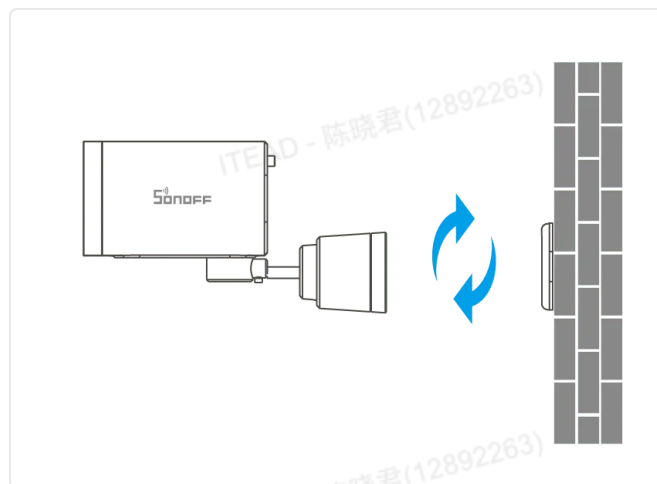


Device was added completely.

Installation



①



②

Note: This device supports wall-mounted installation.

FCC compliance statement

1. This device complies with part 15 of the FCC Rules. Operation is subject to the following two conditions:

- (1) This device may not cause harmful interference, and
- (2) This device must accept any interference received, including interference that may cause undesired operation.

2. Changes or modifications not expressly approved by the party responsible for compliance could void the user's authority to operate the equipment.

Note: This equipment has been tested and found to comply with the limits for a Class B digital device, pursuant to part 15 of the FCC Rules. These limits are designed to provide reasonable protection against harmful interference in a residential installation. This equipment generates, uses and can radiate radio frequency energy and, if not installed and used in accordance with the instructions, may cause harmful interference to radio communications. However, there is no guarantee that interference will not occur in a particular installation. If this equipment does cause harmful interference to radio or television reception, which can be determined by turning the equipment off and on, the user is encouraged to try to correct the interference by one or more of the following measures:

- Reorient or relocate the receiving antenna.
- Increase the separation between the equipment and receiver.
- Connect the equipment into an outlet on a circuit different from that to which the receiver is connected.
- Consult the dealer or an experienced radio/TV technician for help.

FCC Radiation Exposure Statement:

This equipment complies with FCC radiation exposure limits set forth for an uncontrolled environment.

This equipment should be installed and operated with a minimum distance of 20 cm between the radiator and your body.

This transmitter must not be co-located or operating in conjunction with any other antenna or transmitter.

EU Declaration of Conformity

Hereby, Shenzhen Sonoff Technologies Co., Ltd. declares that the radio equipment type CAM-B1P is in compliance with Directive 2014/53/EU. The full text of the EU declaration of conformity is available at the following internet address: <https://sonoff.tech/compliance/>

For CE frequency

EU Operating Frequency Range:

Wi-Fi: 802.11 b/g/n20 2412–2472 MHz, 802.11 n40: 2422–2462 MHz

BLE: 2402–2480 MHz

EU Output Power:

Wi-Fi 2.4G ≤ 20dBm

BLE ≤ 20dBm

Scatola	Manuale	Manuale	Borsa
PAP 20	PAP 21	PAP 22	PE 7
Carta	Carta	Carta	Plastica
RACCOLTA DIFFERENZIATA			
Verifica le disposizioni del tuo Comune.			
Separa le componenti e conferiscile in modo corretto.			

WEEE Disposal and Recycling Information



WEEE Disposal and Recycling Information All products bearing this symbol are waste electrical and electronic equipment (WEEE as in directive 2012/19/EU) which should not be mixed with unsorted household waste. Instead, you should protect human health and the environment by handing over your waste equipment to a designated collection point for the recycling of waste electrical and electronic equipment, appointed by the government or local authorities. Correct disposal and recycling will help prevent potential negative consequences to the environment and human health. Please contact the installer or local authorities for more information about the location as well as terms and conditions of such collection points.

SONOFF

Manufacturer: Shenzhen Sonoff Technologies Co., Ltd.

Address: 3F & 6F, Bldg A, No. 663, Bulong Rd, Shenzhen, Guangdong, China

ZIP code: 518000

Service email: support@itead.cc

Website: sonoff.tech

Made in China



FR

**Cet appareil,
ses accessoires
et cordons se
recyclent**

À DÉPOSER
EN MAGASIN



OU

À DÉPOSER
EN DÉCHÈTERIE



Points de collecte sur www.quefairedemesdechets.fr
Privilégiez la réparation ou le don de votre appareil !

