

User Manual Hydro One (EN)



Zigbee Smart Water Valve

User Manual V1.0

Introduction

This smart water valve supports Zigbee 3.0 and proximity dual communication modes and is powered by four AA batteries for quick installation. It enables remote on/off control via App, with support for scheduled watering, volume-based watering, and smart scene automation. With a built-in flow meter, it provides up to 6 months of watering history and abnormal alert notifications. Weather-adaptive watering automatically adjusts watering based on weather conditions, helping save water and costs.



Water Consumption
Statistics



Brass Water Inlet



6-Month History



Scene Linkage



Dual-Mode Connectivity



APP Control



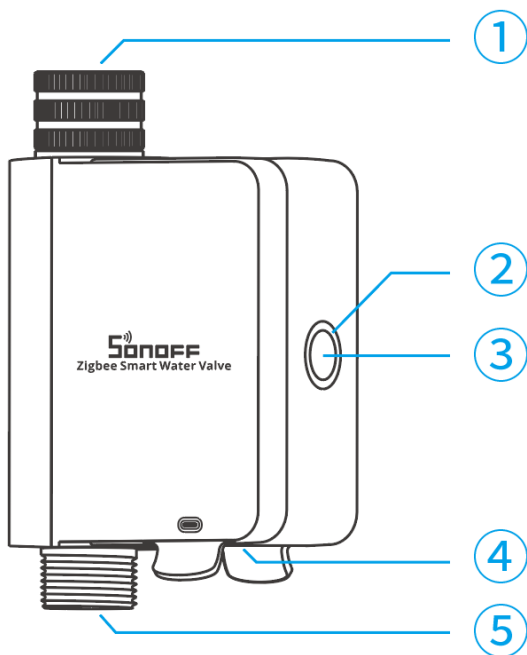
Abnormality Alarm



Timed Watering



Cyclic Irrigation



① Inlet

② LED indicator (Green)

- Keeps off: Zigbee/BLE connection normal
- Slow flash: The device is in pairing mode. (Pairing time 3 minutes)
- Slow flash stops, Keeps off: Pairing failure/Timeout.
- Flashes one time quickly: Turn on/off the smart device.
- Flashes two times quickly: Child Lock OFF
- Flashes three times quickly: Child lock active

③ Button

- Single press: Turn on/off the smart device.
- Press and hold for 5 seconds: The device enters the pairing mode.
- Click three times in succession: Child Lock OFF

④ Battery slot

⑤ Outlet

Platform Certification

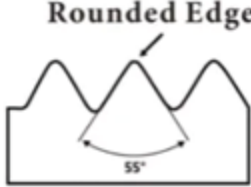
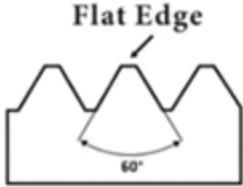


Specification

Product name	Hydro ONE
Product series	Hydro Series
Product type	Zigbee Smart Water Valve
Model	SWV-ZFU/SWV-ZFE
MCU	TLSR8656
Input	6V _{DC} (4*1.5V AA)
Connectivity	Zigbee 3.0/ BLE (Bluetooth Low Energy)
Waterproofing grade	IP55
Working water pressure	0.06~0.8 MPa
Product dimension	152x100x46mm
Color	Black
Casing material	PC+ABS
Working temperature	5~60°C
Working water temperature	5~40°C
Working humidity	5%~95% RH, non-condensing
Working altitude	Below 2,000 m
Certification	SWV-ZFU: FCC/CP65, SWV-ZFE: CE/RoHS

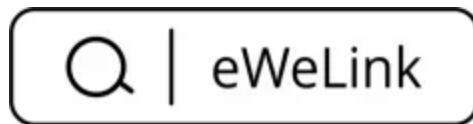
Thread Specifications

Model	SWV-ZFE	SWV-ZFU
-------	---------	---------

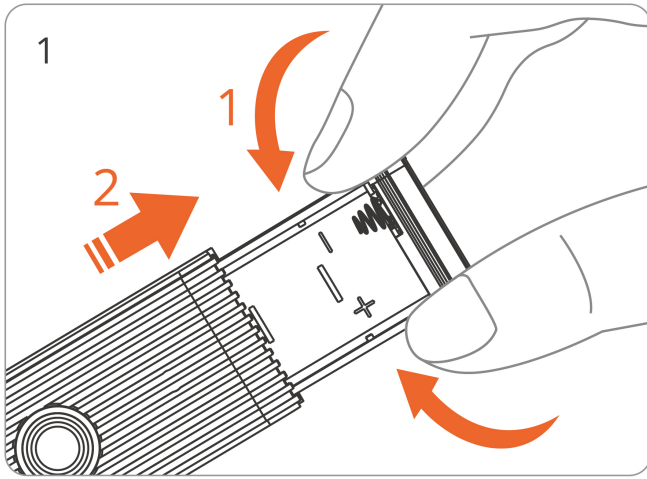
Standard	British Standard Pipe	National Hose
Thread designation	G3/4-14	NH3/4-11.5
Nominal size	3/4"	3/4"
Port diameter	Inner: 18mm Outer: 26mm	
Thread type	<p>Rounded Edge</p> 	<p>Flat Edge</p> 
Recommended for use in	UK, Europe, or most countries or regions	North America

Download the eWeLink App

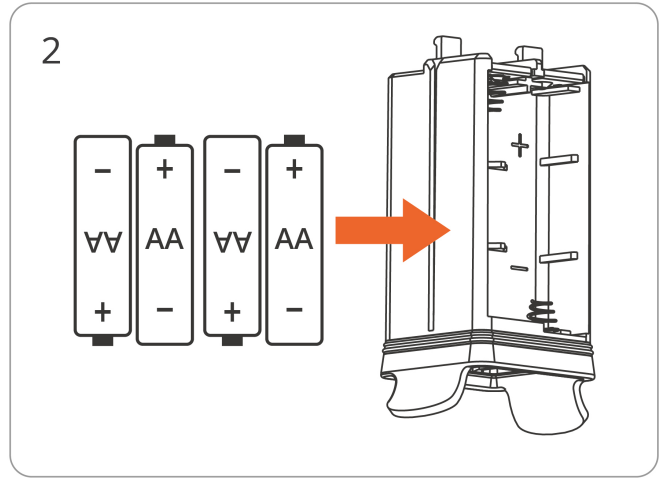
Please download the "eWeLink" App from [Google Play Store](#) or [Apple App Store](#).



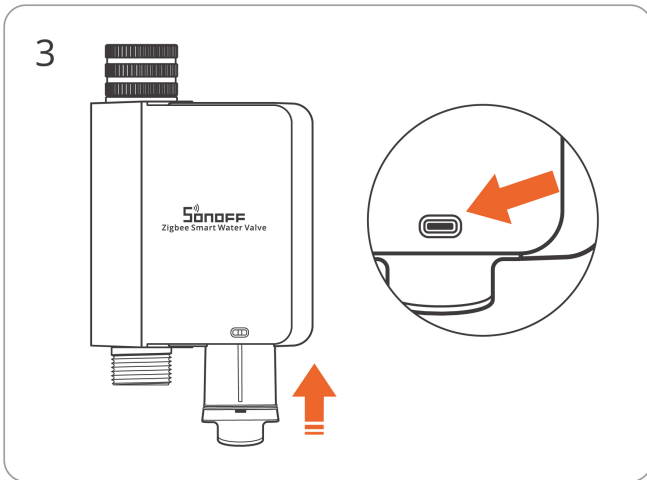
Power On the Device



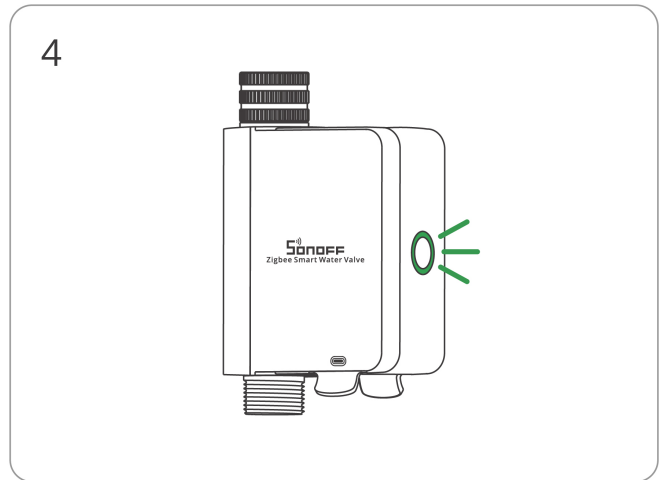
Hold both ends of the battery compartment cover and pull out the battery slot.



Install four AA batteries.



Firmly press the battery slot into the device until the snap at the arrow is visible.



When the device is powered on for the first time, it will automatically enter pairing mode, and the LED indicator will flash slowly.

ⓘ If pairing is not completed within 3 minutes, the device will exit pairing mode.

To re-enter pairing mode, press and hold the device button for 5 seconds until the LED indicator flashes slowly again.

Add Device

Method 1 : Zigbee Pairing (Suggested)

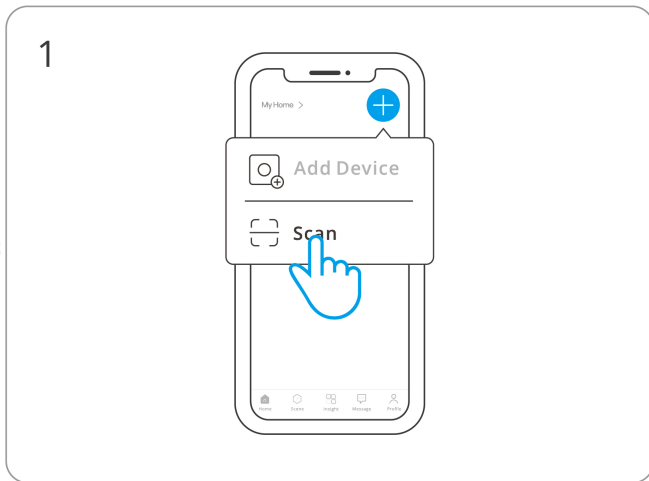
① Add SONOFF Zigbee gateway

Matched Gateways

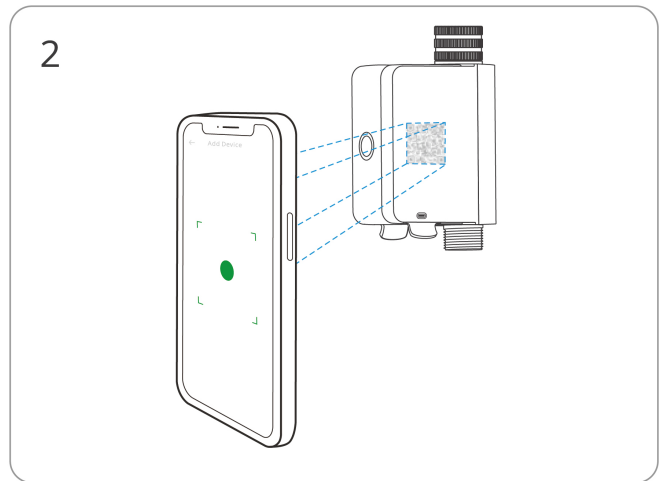
Recommended SONOFF gateway models:	ZBBridge-P, ZBBridge-U, NSPanel Pro, iHost
Other compatible SONOFF gateway models:	ZBDongle-P, ZBDongle-E, ZBDongle-M, ZBDongle Plus MG24, ZBDongle Lite MG21

ⓘ Before adding the device, please ensure that the gateway firmware is updated to the latest version.

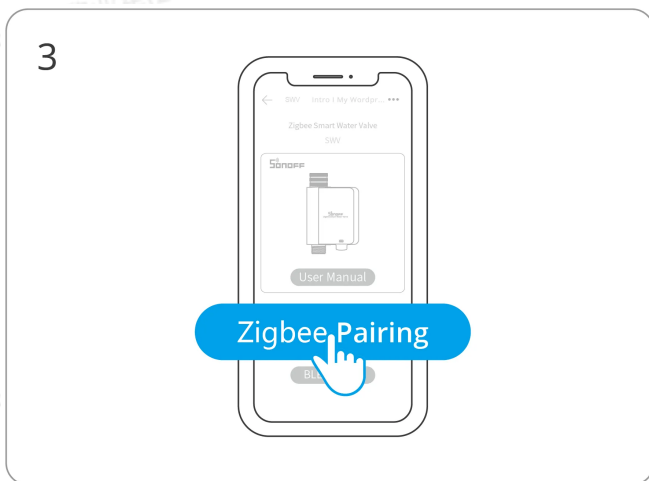
② Add device



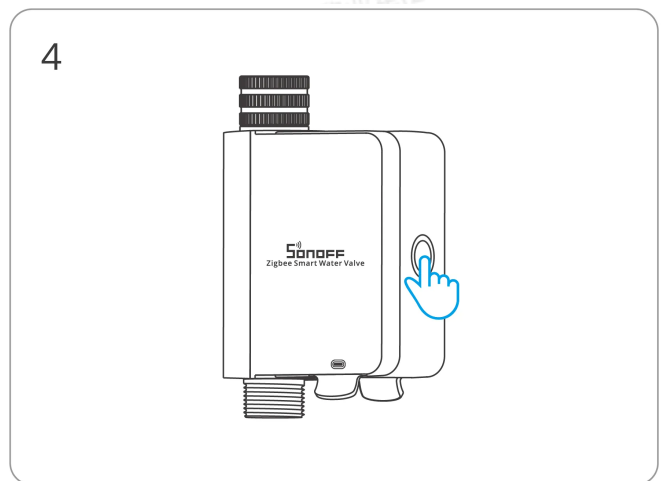
Enter "Scan"



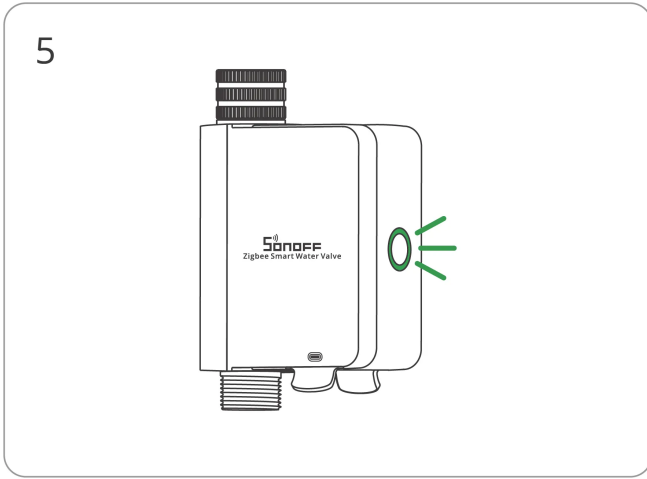
Scan the QR code on the device



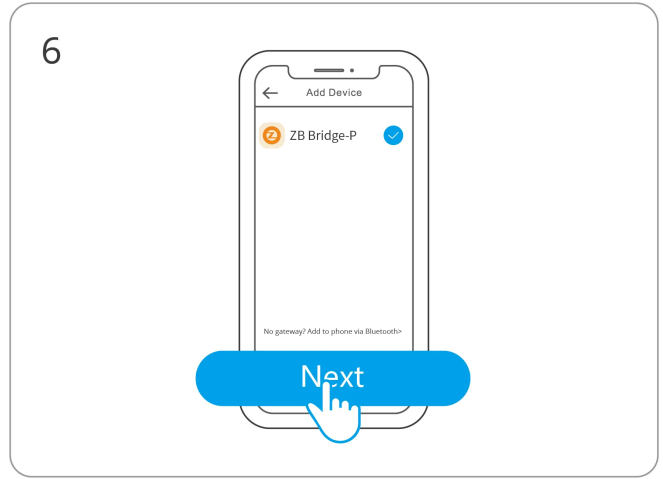
Select "Zigbee Pairing"



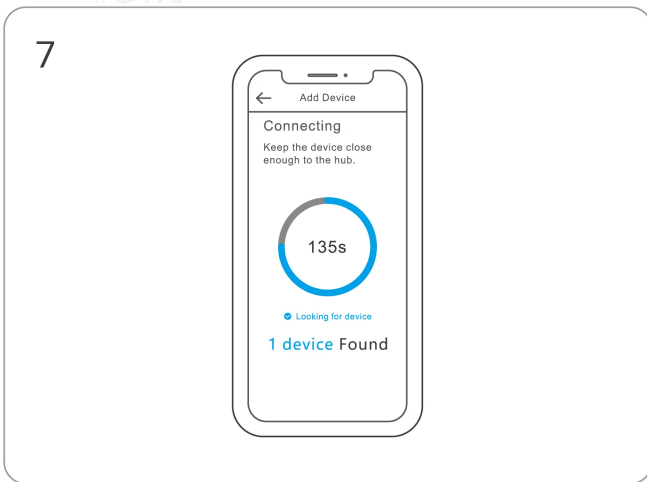
(If the device exits pairing mode)
Long press the button for 5 seconds



Check the LED indicator flashing status (slow flash)

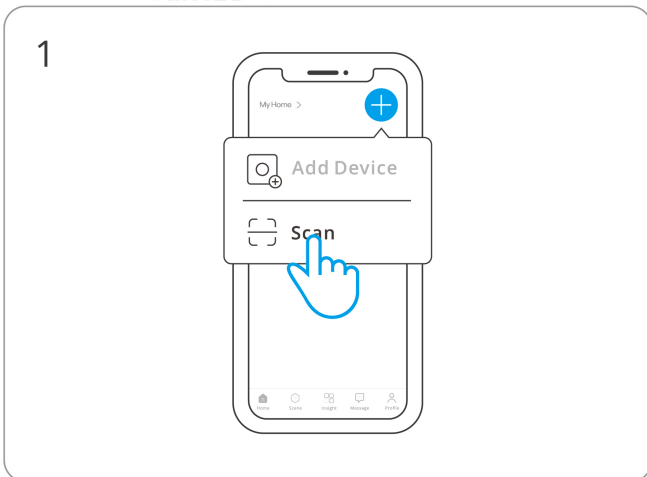


Select Zigbee gateway

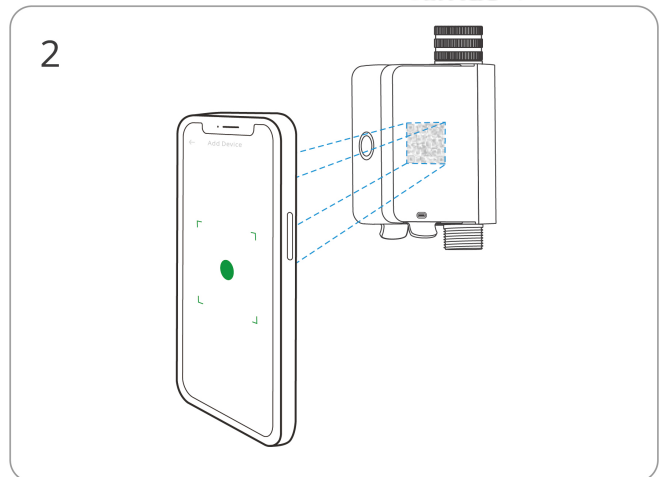


Wait until the addition is done

Method 2: BLE Pairing



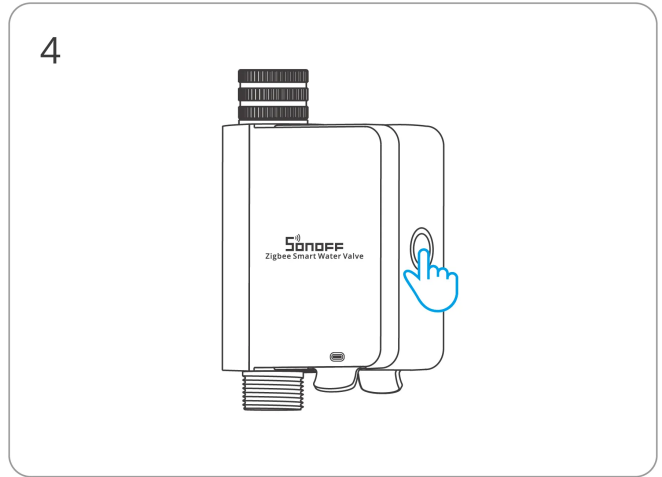
Enter "Scan"



Scan the QR code on the device

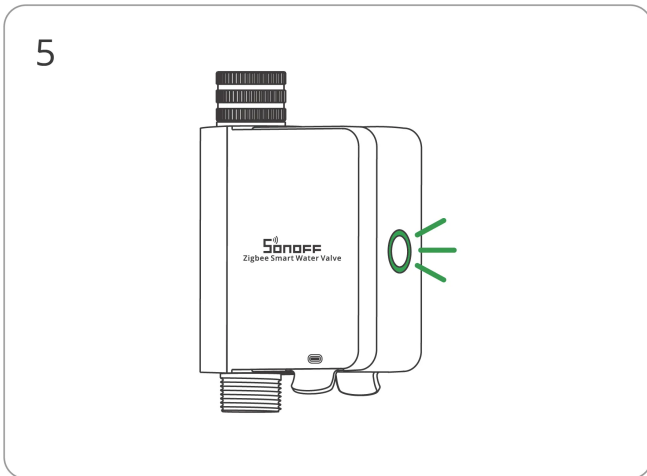


Select "BLE Pairing"

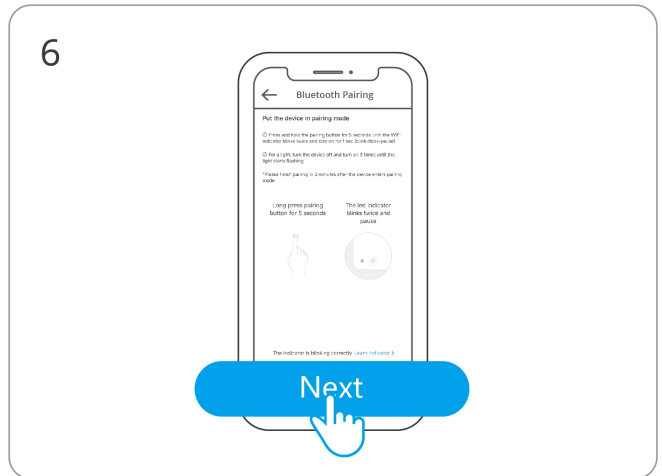


(If the device exits pairing mode)

Long press the button for 5 seconds



Check the LED indicator flashing status (slow flash)



Tap "Next"



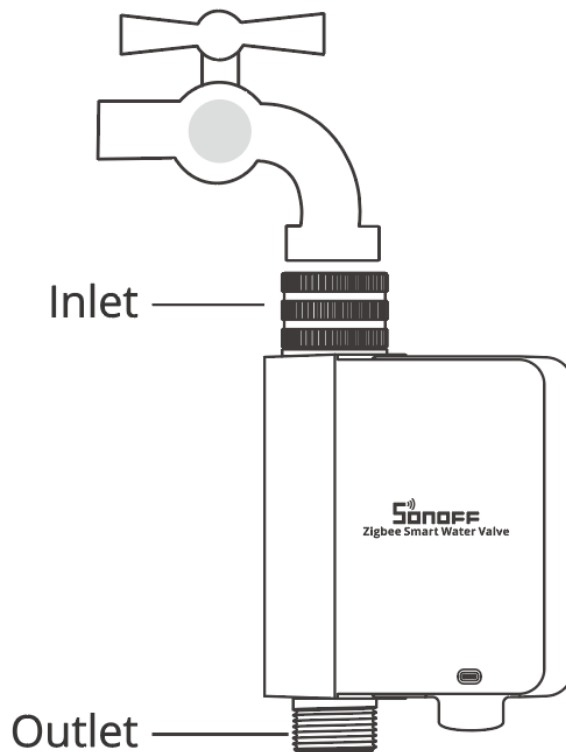
Choose the device and tap "connect"

ⓘ When connected to the Zigbee gateway, the eWeLink App provides a more complete experience, including remote access, smart scenes, and push notifications.

ⓘ Without a Zigbee gateway, the device can connect directly to a mobile phone, and the eWeLink App supports basic functions such as schedule settings.

Installation

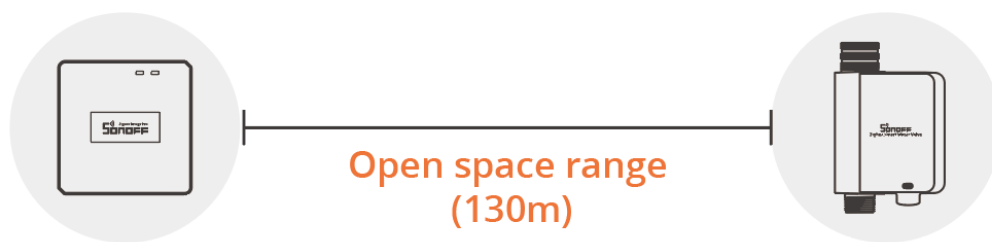
First, wrap the thread seal tape around the thread of the faucet, then screw the nut of the water inlet of the equipment onto the faucet. After testing that there is no leakage, finally connect the hose to the water outlet of the equipment (if the water outlet leaks, please wrap thread seal tape around the thread of the water outlet).



ⓘ It is recommended to install vertically as horizontal installation may increase the error in flow rate measurement.

Communication Distance

ITEAD - 黎业



Zigbee Gateway

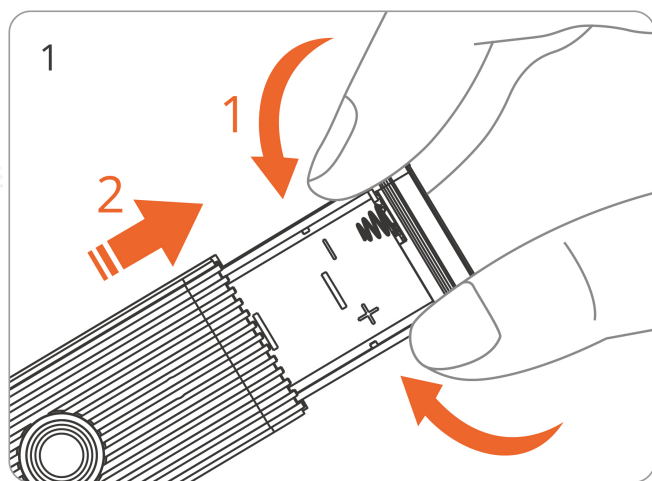
Smart Water Valve

ITEAD - 黎业军(2602432)

The maximum communication distance of this device is 130m (open space).

ITEAD - 黎业军(2602432)

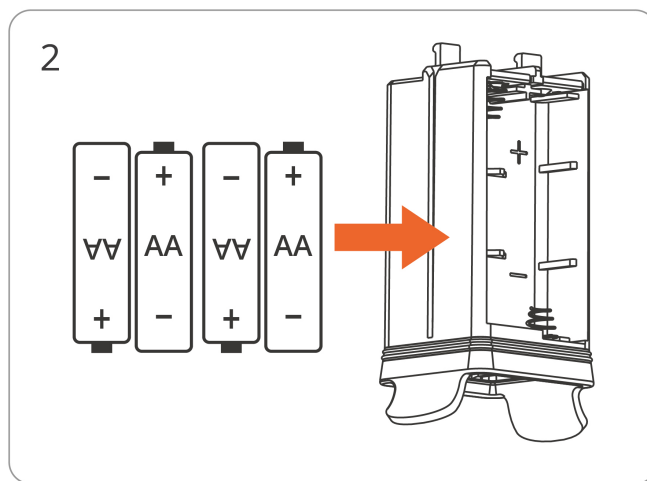
Battery Replacement



ITEAD

ITEAD - 黎业军(2602432)

Hold both ends of the battery compartment cover and pull out the battery slot.

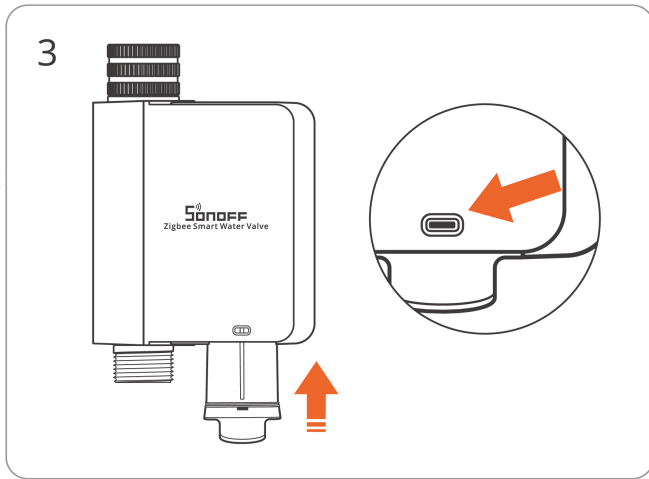


ITEAD - 黎业军(2602432)

Replace the battery in the battery compartment.

ITEAD - 黎业军(2602432)

ITEAD - 黎业军(2602432)



Firmly press the battery slot into the device until the snap at the arrow is visible.

ⓘ When replacing the battery, please use high-quality batteries of the same model and specification. Do not mix batteries of different brands, capacities, or new and old batteries, to ensure optimal battery life and stable performance.

Factory Reset

1. Remove the device from the App on the device settings page.
2. Press and hold the device button for 10 seconds until the indicator light flashes rapidly, then release to restore factory settings.

Both methods will restore the device to factory settings.

FCC compliance statement

Responsible Party Name: SONOFF TECHNOLOGY LLC

Address: 14777 NE 40th St, Suite 201 Bellevue, WA 98007

Email Address: usres@itead.cc FCC ID: 2APN5-SWVZFU

1. This device complies with part 15 of the FCC Rules. Operation is subject to the following two conditions:

(1) This device may not cause harmful interference, and

(2) This device must accept any interference received, including interference that may cause undesired operation.

2. Changes or modifications not expressly approved by the party responsible for compliance could void the user's authority to operate the equipment.

Note: This equipment has been tested and found to comply with the limits for a Class B digital device, pursuant to part 15 of the FCC Rules. These limits are designed to provide reasonable protection against harmful interference in a residential installation. This equipment generates, uses and can radiate radio frequency energy and, if not installed and used in accordance with the instructions, may cause harmful interference to radio communications. However, there is no guarantee that interference will not occur in a particular installation. If this equipment does cause harmful interference to radio or television reception, which can be determined by turning the equipment off and on, the user is encouraged to try to correct the interference by one or more of the following measures:

—Reorient or relocate the receiving antenna.

—Increase the separation between the equipment and receiver.

—Connect the equipment into an outlet on a circuit different from that to which the receiver is connected.

—Consult the dealer or an experienced radio/TV technician for help.

FCC Radiation Exposure statement:

This equipment complies with FCC radiation exposure limits set forth for an uncontrolled environment.

This equipment should be installed and operated with a minimum distance of 20 cm between the radiator and your body.

This transmitter must not be co-located or operating in conjunction with any other antenna or transmitter.

UL 4200A compliance statement

⚠ WARNING

- **INGESTION HAZARD:** This product contains a button cell or coin battery.
- **DEATH** or serious injury can occur if ingested.
- A swallowed button cell or coin battery can cause **Internal Chemical Burns** in as little as **2 hours**.
- **KEEP** new and used batteries **OUT OF REACH of CHILDREN**.
- **Seek immediate medical attention** if a battery is suspected to be swallowed or inserted inside any part of the body.



Warning: contains coin battery.

- Remove and immediately recycle or dispose of used batteries according to local regulations and keep away from children. Do NOT dispose of batteries in household trash or incinerate.
- Even used batteries may cause severe injury or death.
- Call a local poison control center for treatment information.
- Compatible battery type: CR1220
- Nominal battery voltage: 3V_{DC}
- Non-rechargeable batteries are not to be recharged.
- Do not force discharge, recharge, disassemble, heat above 60°C or incinerate. Doing so may result in injury due to venting, leakage or explosion resulting in chemical burns.
- Ensure the batteries are installed correctly according to polarity(+ and -)
- Do not mix old and new batteries, different brands or types of batteries, such as alkaline, carbon-zinc, or rechargeable batteries.
- Remove and immediately recycle or dispose of batteries from equipment not used for an extended period of time according to local regulations.
- Always completely secure the battery compartment. If the battery compartment does not close securely, stop using the product, remove the batteries, and keep them away from children.



WARNING

- Do not ingest battery, Chemical Burn Hazard.
- This product contains a coin / button cell battery. If the coin / button cell battery is swallowed, it can cause severe internal burns in just 2 hours and can lead to death.
- Keep new and used batteries away from children.
- If the battery compartment does not close securely, stop using the product and keep it away from children. If you think batteries might have been swallowed or placed inside any part of the body, seek immediate medical attention.
- Leaving a battery in an extremely high temperature surrounding environment that can result in an explosion or the leakage of flammable liquid or gas.
- A battery subjected to extremely low air pressure that may result in an explosion or the leakage of flammable liquid or gas.
- Do not replace a battery with an incorrect type.
- Disposal of a battery into fire or a hot oven, or mechanically crushing or cutting of a battery, that can result in an explosion.
- This appliance contains non-rechargeable batteries; these batteries must not be recharged.

EU Declaration of Conformity

Hereby, Shenzhen Sonoff Technologies Co., Ltd. declares that the radio equipment type SWV-ZFE is in compliance with Directive 2014/53/EU. The full text of the EU declaration of conformity is available at the following internet address: <https://sonoff.tech/compliance/>

For CE frequency

EU Operating Frequency Range:

Zigbee: 2405–2480 MHz

BLE: 2402–2480 MHz

EU Output Power:

Zigbee ≤ 10dBm

BLE ≤ 10dBm

Under normal use of condition, this equipment should be kept at a separation distance of at least 20 cm between the antenna and the body of the user.

WEEE Disposal and Recycling Information



WEEE Disposal and Recycling Information All products bearing this symbol are waste electrical and electronic equipment (WEEE as in directive 2012/19/EU) which should not be mixed with unsorted household waste. Instead, you should protect human health and the environment by handing over your waste equipment to a designated collection point for the recycling of waste electrical and electronic equipment, appointed by the government or local authorities. Correct disposal and recycling will help prevent potential negative consequences to the environment and human health. Please contact the installer or local authorities for more information about the location as well as terms and conditions of such collection points.

Scatola	Manuale	Pellicola
PAP 20	PAP 22	PP 5
Carta	Carta	Plastica

RACCOLTA DIFFERENZIATA

Verifica le disposizioni del tuo Comune.

Separa le componenti e conferiscile in modo corretto.

SONOFF

Manufacturer: Shenzhen Sonoff Technologies Co., Ltd.

Address: 3F & 6F, Bldg A, No. 663, Bulong Rd, Shenzhen, Guangdong, 518000, China

Service email: support@itead.cc Website: sonoff.tech

Made in China



FR

Cet appareil,
ses accessoires
et piles se
recyclent

À DÉPOSER
EN MAGASIN



OU

À DÉPOSER
EN DÉCHÈTERIE



Points de collecte sur www.quefairedemesdechets.fr
Privilégiez la réparation ou le don de votre appareil !



ITEAD - 黎业军(2602432)

ITEAD - 黎业军(2602432)