

User Manual MINI-ZB2GS-L (EN)



2-Gang Zigbee Smart Switch (No Neutral Required)

User Manual V1.0

Introduction

The MINI DUO-L is an ultra-compact Zigbee 3.0 dual-channel switch(No Neutral Wire Required), designed to fit neatly inside standard wall switch boxes. Supporting a total load of up to 12A, it connects to a Zigbee gateway to transform traditional switches into smart controls. It can also be linked with other devices in smart scenes to enable seamless home automation.



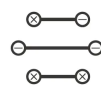
Remote Control



Timer Schedule



Smart Scene



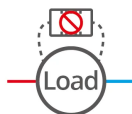
Power-on State



Dual Load Control



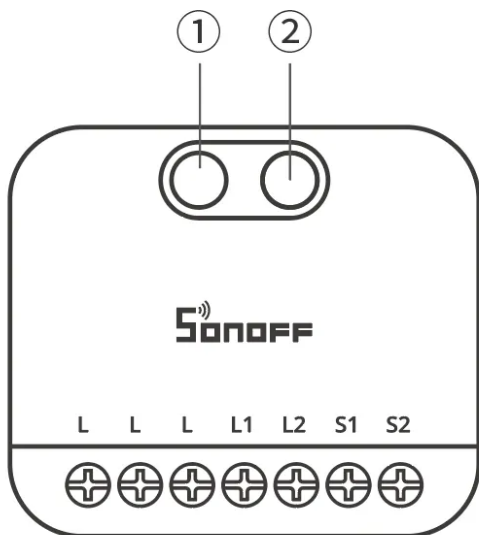
No Neutral Wire
Required



No By-pass Module
Needed



Supports External
Switch



① Button

- Press and hold for 5 seconds: Device enters the pairing mode. (Pairing time 3 minutes)
- Click three times in succession: Switch external switch type.

② LED indicator (Green)

- Slow flash: Device is in pairing mode.
- Keeps off: Normal connection with the gateway.
- Fast flash: Abnormal connection with the gateway, Pairing failure/Timeout.
- Flashes three times quickly: Switch the external switch trigger type.
- Flashes five times quickly: Trigger Factory Reset

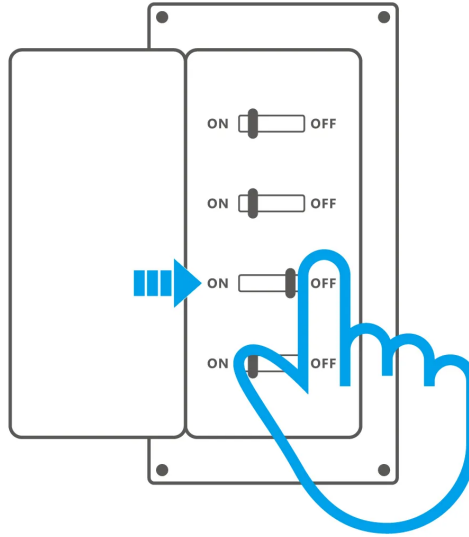
Specification

Product name	MINI DUO-L
Product series	MINI Extreme series
Product type	2-Gang Zigbee Smart Switch (No Neutral Required)
Model	MINI-ZB2GS-L
MCU	EFR32MG22
Rating	100-240V~ 50/60Hz 8A/gang, Total 12A MAX Resistive load

LED	300W@240V/gang, 150W@100V/gang, Total 600W@240V, 300W@100V
Min. load	3W (No Neutral Required)
Zigbee	IEEE 802.15.4
Net weight	33g
Product dimension	45x39.4x16.8mm
Color	White
Casing material	PC
Diameter of wiring (recommend)	16AWG to 14AWG SOL/STR copper conductor only
Applicable place	Indoor
Working temperature	-10°C~40°C
Working humidity	5-95%RH, non-condensing
Certification	CE/FCC/RoHS

Installation

1. Power off



WARNING

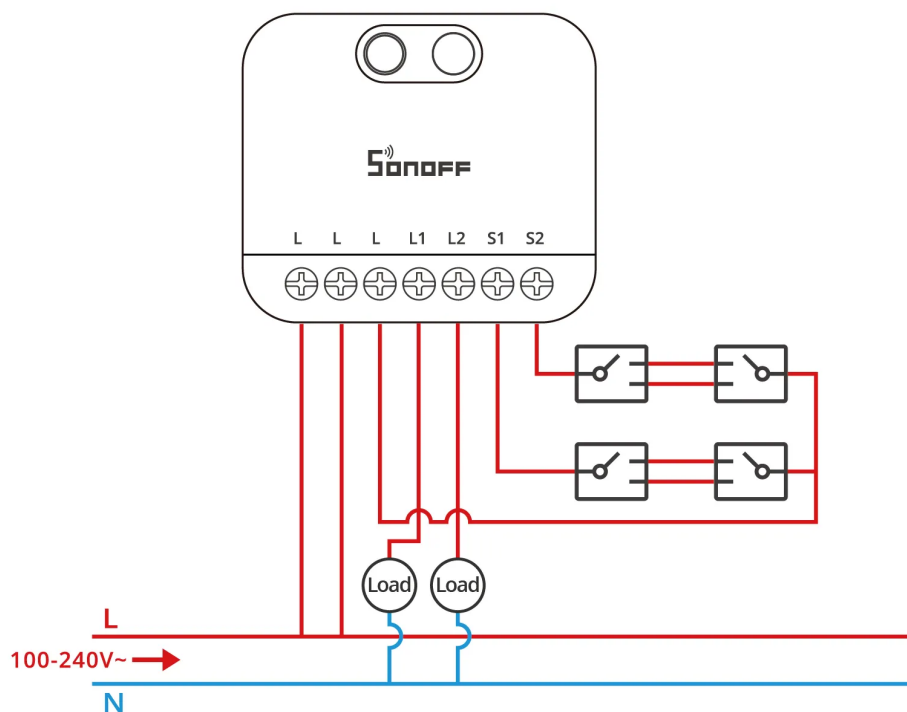
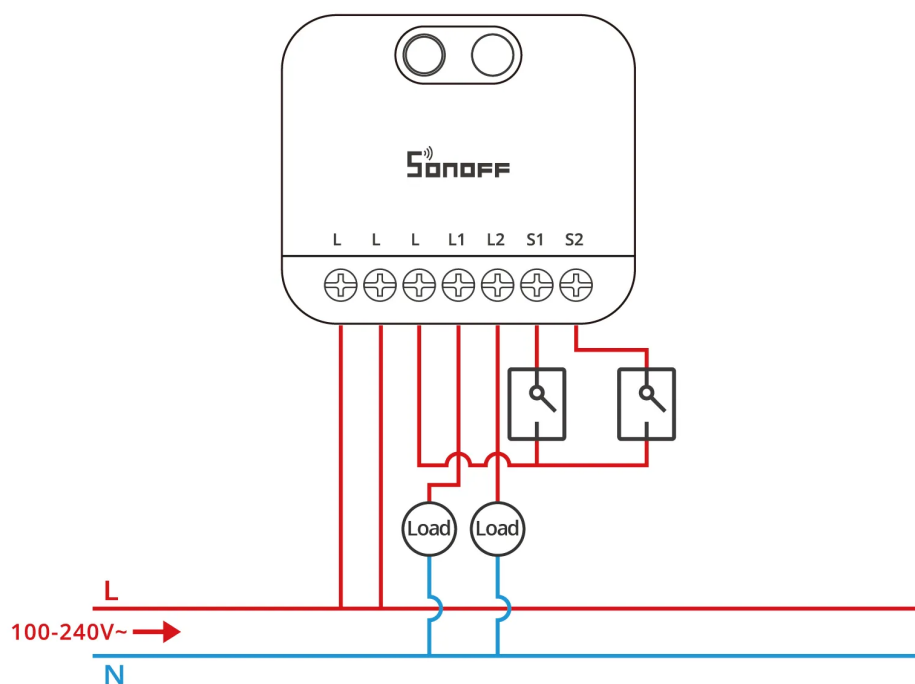
Please install and maintain the device by a professional electrician. To avoid electric shock hazards, do not operate any connection or contact the terminal connector while the device is powered on!

2. Wiring instruction

⚠ To ensure the safety of your electrical installation, it's essential that either a Miniature Circuit Breaker (MCB) or a Residual Current operated Circuit-breaker with Integral Overcurrent protection (RCBO) with an electrical rating of 12A has been installed before the MINI-ZB2GS-L.

⚠ For single-phase use only (100–240V~). Connecting to multiple phases may result in damage to the device.

⚠ Make sure all wires are connected correctly.



⚠ It is prohibited to connect S1 and S2 terminals to the neutral or ground wire, in order to avoid damaging the equipment and causing danger.

⚠ Supported switches include rocker switches and push buttons, and factory default is the rocker switch. **Method of changing the switch type:** short press the button 3 times

until the LED signal indicator flashes 3 times quickly, now you change the switch type successfully.

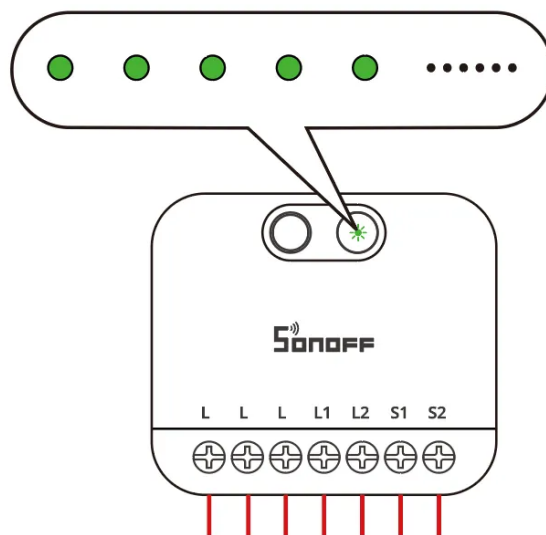
ⓘ The device will remain in the off state and cannot be controlled by the device's button or external switch when it is in Pairing mode.

Instructions for wiring symbols

Terminals		Wires	
L	Live Terminal	L	Live Line (100–240V~)
L1	Live Output Terminal_1 (100–240V~)		
L2	Live Output Terminal_2 (100–240V~)		
S1	Switch_1		
S2	Switch_2		

3. Power on

After powering on, the device will enter the pairing mode by default during the first use, and the LED signal indicator will "flash slowly".



⚠ The device will exit the pairing mode if you do not operate it within 3mins. When you want to enter the pairing mode again, long press any button on the device for 5 seconds until the signal light “flashes slowly” and release.

Add device

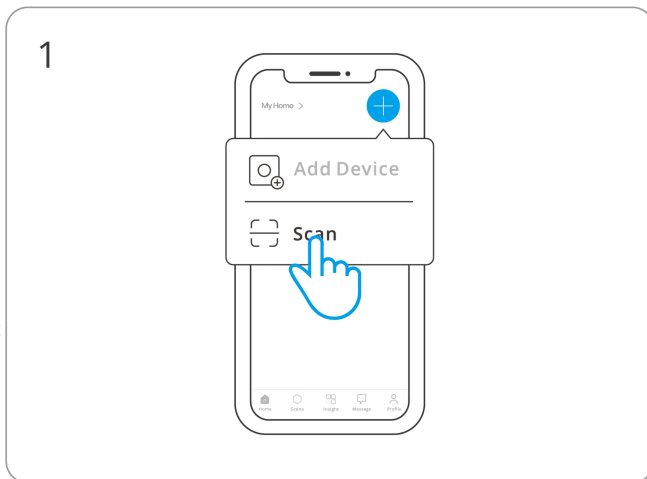
1. Download the eWeLink App

Please download the "eWeLink" App from **Google Play Store** or **Apple App Store**.

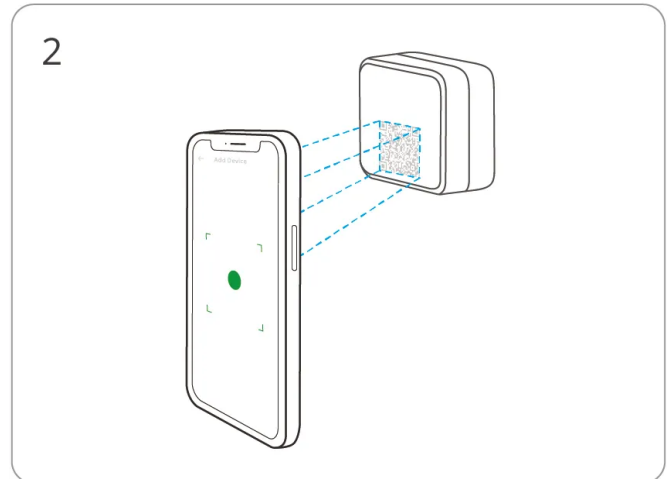


2. Add SONOFF Zigbee gateway

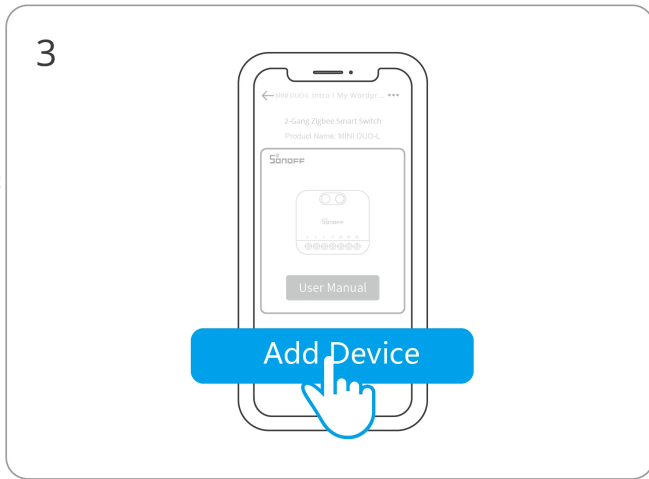
3. Network configuration



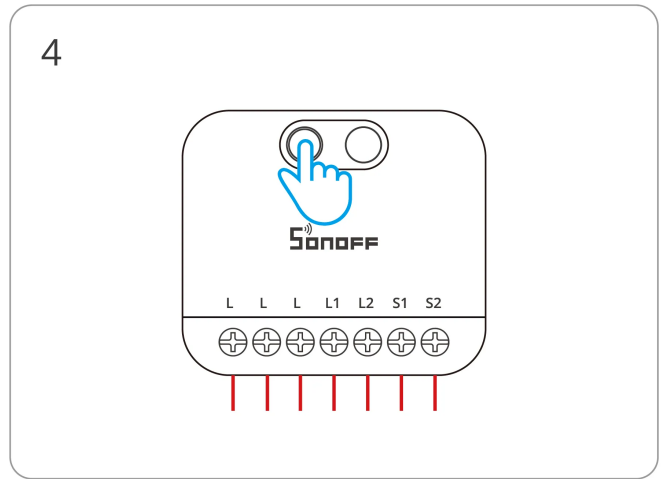
Enter "Scan"



Scan the QR code on the device

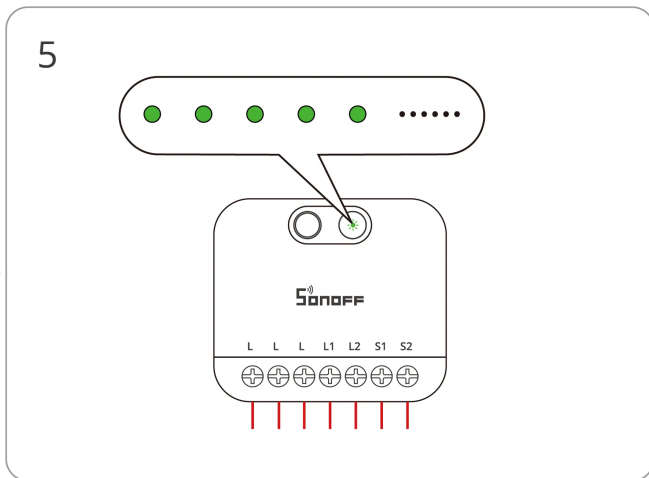


Select "Add Device"

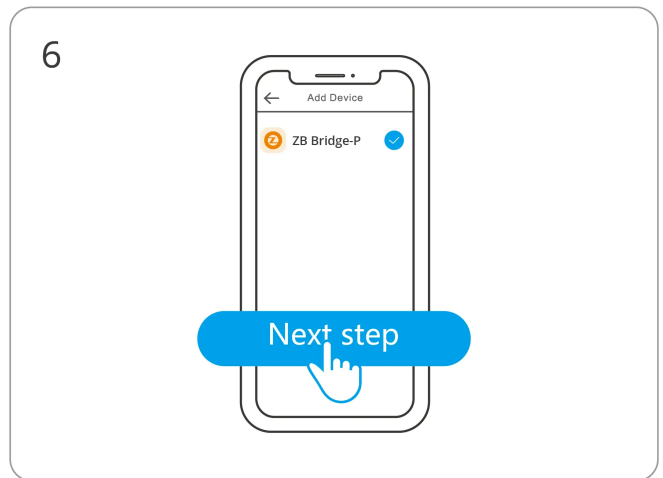


(If the device exits pairing mode)

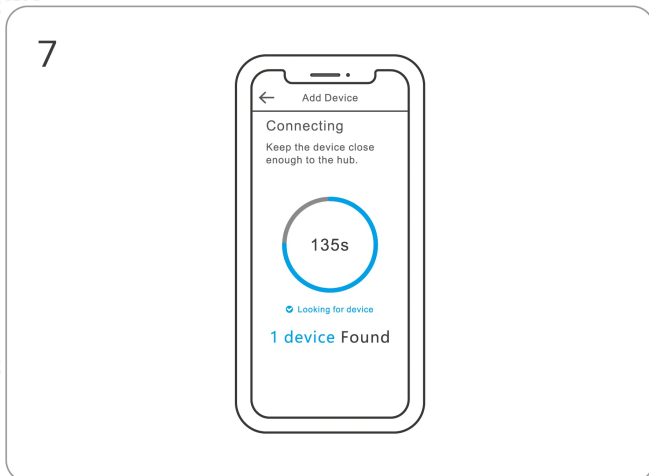
Long press the button for 5 seconds



Check LED indicator flashing status (Slow flash)



Select Zigbee gateway



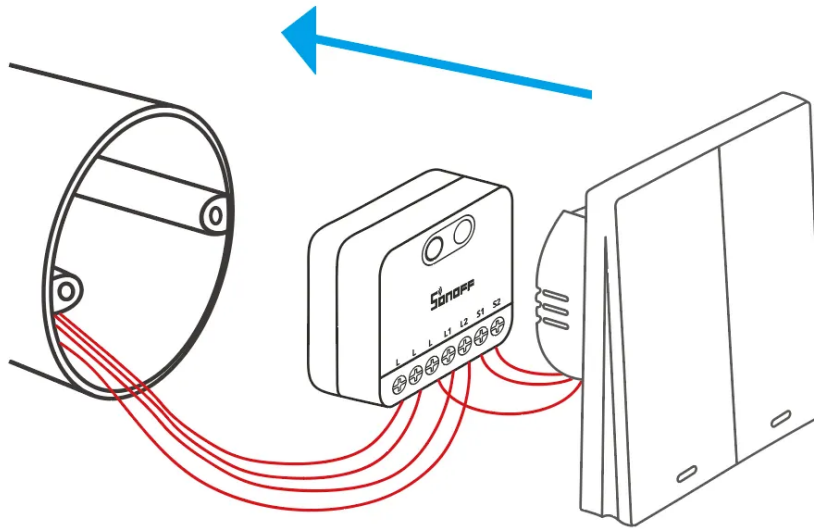
Wait until the addition is done.

Compatible SONOFF Gateways

Recommended SONOFF gateway models: ZBBridge-P, ZBBridge-U, NSPanel Pro, iHost.

Other compatible SONOFF gateway models: ZBDongle-P, ZBDongle-E.

Install the device in the mounting box



Factory Reset

Trigger conditions (any one condition met)

- Press and hold the device button for 10 seconds.
- Delete the device on the App.

FCC compliance statement

Responsible Party Name: SONOFF TECHNOLOGY LLC

Address: 14777 NE 40th St, Suite 201 Bellevue, WA 98007

Email Address: usres@itead.cc FCC ID: 2APN5-MINIZB2GSL

1. This device complies with part 15 of the FCC Rules. Operation is subject to the following two conditions:

(1) This device may not cause harmful interference, and

(2) This device must accept any interference received, including interference that may cause undesired operation.

2. Changes or modifications not expressly approved by the party responsible for compliance could void the user's authority to operate the equipment.

Note: This equipment has been tested and found to comply with the limits for a Class B digital device, pursuant to part 15 of the FCC Rules. These limits are designed to provide reasonable protection against harmful interference in a residential installation. This equipment generates, uses and can radiate radio frequency energy and, if not installed and used in accordance with the instructions, may cause harmful interference to radio communications. However, there is no guarantee that interference will not occur in a particular installation. If this equipment does cause harmful interference to radio or television reception, which can be determined by turning the equipment off and on, the user is encouraged to try to correct the interference by one or more of the following measures:

—Reorient or relocate the receiving antenna.

—Increase the separation between the equipment and receiver.

—Connect the equipment into an outlet on a circuit different from that to which the receiver is connected.

—Consult the dealer or an experienced radio/TV technician for help.

FCC Radiation Exposure statement:

This equipment complies with FCC radiation exposure limits set forth for an uncontrolled environment.

This equipment should be installed and operated with a minimum distance of 20 cm between the radiator and your body.

This transmitter must not be co-located or operating in conjunction with any other antenna or transmitter.

EU Declaration of Conformity

Hereby, Shenzhen Sonoff Technologies Co., Ltd. declares that the radio equipment type MINI-ZB2GS-L is in compliance with Directive 2014/53/EU. The full text of the EU declaration of conformity is available at the following internet address:

<https://sonoff.tech/compliance/>

For CE Frequency

EU Operating Frequency Range:

Zigbee: 2405–2480 MHz

EU Output Power:

Zigbee≤10dBm

Under normal use of condition, this equipment should be kept a separation distance of at least 20 cm between the antenna and the body of the user.

WEEE Disposal and Recycling Information



WEEE Disposal and Recycling Information All products bearing this symbol are waste electrical and electronic equipment (WEEE as in directive 2012/19/EU) which should not be mixed with unsorted household waste. Instead, you should protect human health and the environment by handing over your waste equipment to a designated collection point for the recycling of waste electrical and electronic equipment, appointed by the government or local authorities. Correct disposal and recycling will help prevent potential negative consequences to the environment and human health. Please contact the installer or local authorities for more information about the location as well as terms and conditions of such collection points.

Scatola	Manuale
PAP 21	PAP 22
Carta	Carta
RACCOLTA DIFFERENZIATA	

Verifica le disposizioni del tuo Comune.

Separa le componenti e conferiscile in modo corretto.

SONOFF

Manufacturer: Shenzhen Sonoff Technologies Co., Ltd.

Address: 3F & 6F, Bldg A, No. 663, Bulong Rd, Shenzhen, Guangdong, 518000, China

Service email: support@itead.cc

Website: sonoff.tech

Made in China



FR

**Cet appareil
se recycle**

À DÉPOSER
EN MAGASIN



OU

À DÉPOSER
EN DÉCHÈTERIE



Points de collecte sur www.quefairedemesdechets.fr
Privilégiez la réparation ou le don de votre appareil !

