

User Manual MINI-ZBD (EN)

[Introduction](#)

[Compatible Voice Assistants](#)

[Specification](#)

[Installation](#)

1. Power off

2. Wiring instruction

DC low power load wiring:

Dry contact wiring:

3. Power on

[Check the Device Status](#)

[Add Device](#)

1. Download the eWeLink App

2. Add SONOFF Zigbee gateway

3. Scan QR code to add the device

[Compatible SONOFF Gateways](#)

[Install the device in the mounting box](#)

[Factory Reset](#)

[FCC compliance statement](#)

[EU Declaration of Conformity](#)

[For CE frequency](#)

[WEEE Disposal and Recycling Information](#)

SONOFF



Zigbee Dry Contact Smart Switch

User Manual V1.0

Introduction

MINI-ZBD is a Zigbee 3.0 dry contact smart switch supporting AC/DC power. It controls motors, garage doors, and other dry contact devices, with app-based remote control, scheduling, and voice control. It also acts as a Zigbee router to boost signal coverage and enables smart automation with other devices.



Remote Control



Dry Contact Output



Support AC/DC Input



External Switch



Relay Function



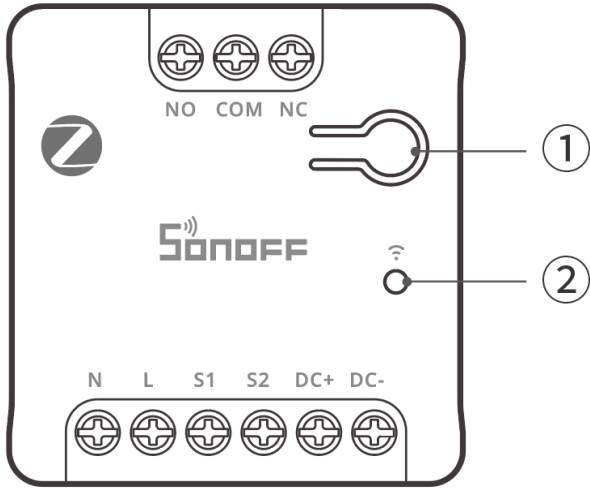
Timer Schedule



Voice Control



Smart Scene



① Button

- Single Press: Turn on/off the smart device.
- Press and hold for 5 seconds: Device enters the pairing mode. (Pairing time 3 minutes)
- Press and hold for 10 seconds: Factory Reset
- Press three times in succession: Switch the external switch type.

② LED indicator (Blue)

- Slow flash: Device is in pairing mode.
- Keeps off: Pairing failure/Timeout
- Keeps on: Normal connection with the gateway.
- Fast flash: Abnormal connection with the gateway.
- Flashes three times quickly: Switch the external switch trigger type.

Compatible Voice Assistants



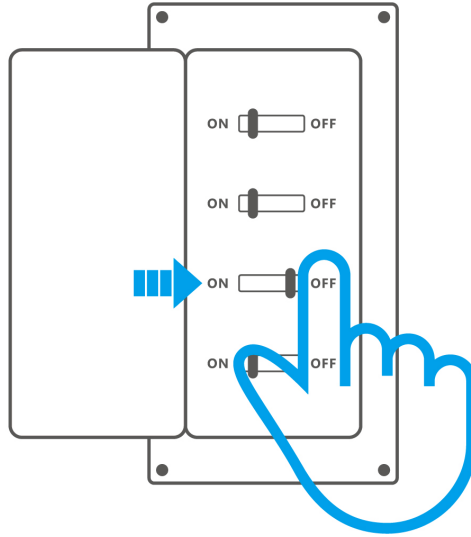
Specification

MINI Dry	
Name	Zigbee Dry Contact Smart Switch
Model	MINI-ZBD
MCU	EFR32MG21
Rating	100-240V~ 50/60Hz 0.1A Max OR 12-48V=1A Max μ
Load	24V=2A Max Resistive load OR 12/24V=8W M

Zigbee	IEEE 802.15.4
Net Weight	35.3g
Dimensions	41x43x21.5mm
Color	White
Casing Material	PC
Applicable Place	Indoor
Wiring	18AWG to 14AWG (0.75mm ² to 1.5 mm ²)
Working Temperature	10T40 (-10°C~40°C)
Working Humidity	5%~95% RH, non-condensing
Working Height	Less than 2000m
Pollution Degree	II
Rated Impulse Voltage	4KV
Automatic Action	20000 Cycles
Control Type	1.B
FCC ID	2APN5-MINIZBD
Certification	CE/FCC/RoHS

Installation

1. Power off



WARNING

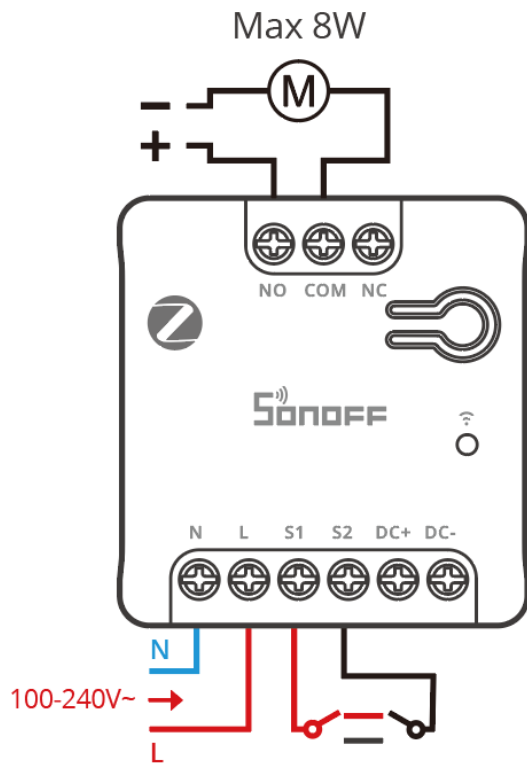
- ① Installation and maintenance must be carried out by a qualified electrician. Do not wire or touch the terminals while the device is powered on to avoid the risk of electric shock.
- ② To ensure safe electrical installation, a 3A overcurrent protection device must be used in the MINI-ZBD control output circuit.
- ③ For DC use only (12–48V \equiv) or single-phase AC (100–240V \sim). Connecting to a multi-phase power supply may damage the device.

2. Wiring instruction

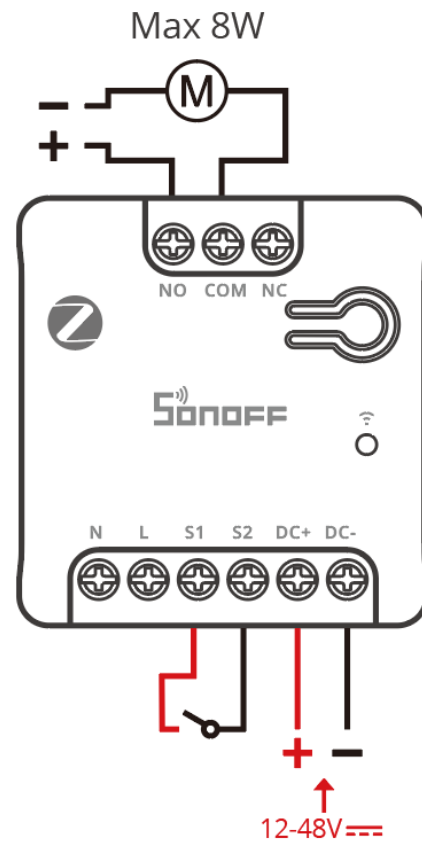
- ⓘ Do not connect AC and DC power inputs at the same time.
- ⓘ Ensure correct wiring connections.

DC low power load wiring:

AC Input:



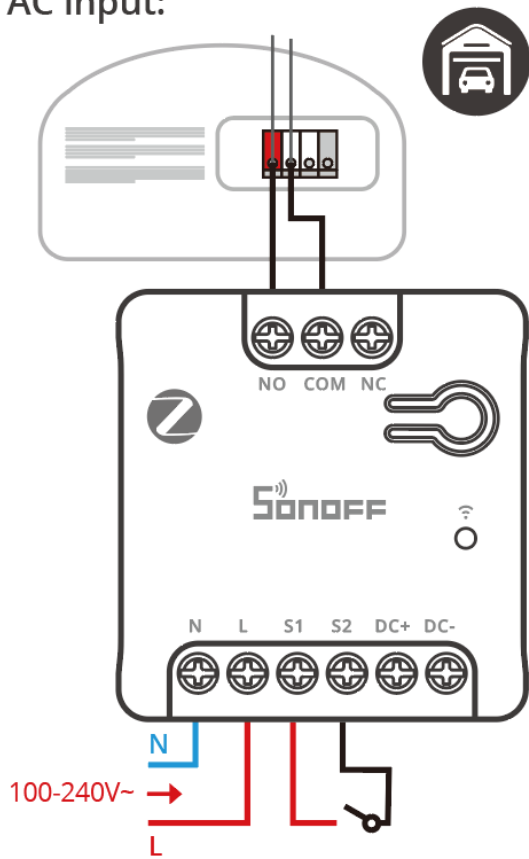
DC Input:



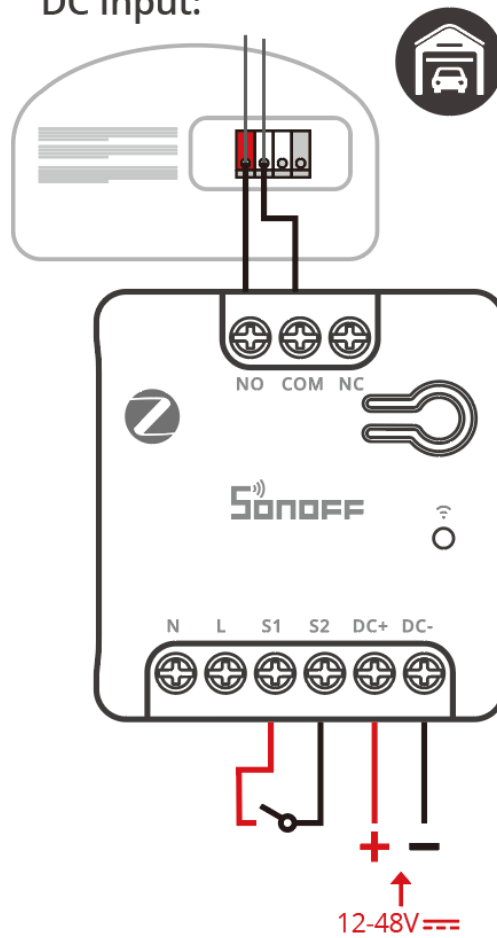
Dry contact wiring:

- ⓘ Applicable to devices that can be controlled via dry contact.
- ⓘ To ensure compatibility with the garage door motor, please short-circuit the terminals of the motor that were originally used to connect to the wall switch (the short-circuiting process is safe, so don't worry). If the garage door motor operates after short-circuiting, it is compatible; if the motor does not operate, it is not compatible.

AC Input:



DC Input:

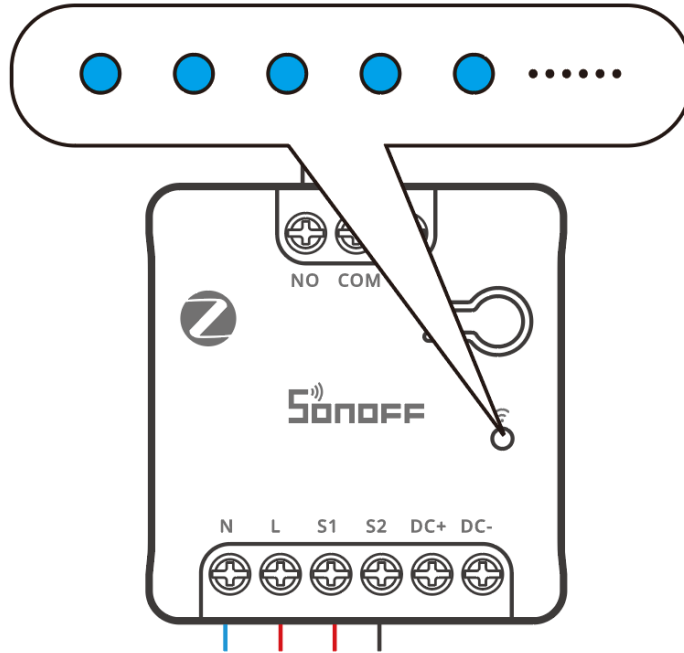


Instructions of wiring symbols

Terminals		Wires	
NO	Normally Open (Output Terminal)		
COM	Common (Output Terminal)		
NC	Normally Closed (Output Terminal)		
N	Neutral (Input Terminal)	N	Neutral Wire
L	Live (Input Terminal)	L	Live (100~240V) Wire
S1	External Switch (Input Terminal)		
S2	External Switch (Input Terminal)		
DC+	12V–48V DC Positive (Input Terminal)	+	12V–48V DC Positive Wire
DC–	12V–48V DC Negative (Input Terminal)	–	12V–48V DC Negative Wire

3. Power on

After powering on, the device will enter the pairing mode during the first use. The LED indicator will "flash slowly".



ⓘ The device will exit the pairing mode if not paired within 3 mins. If you want to enter this mode, please long press the button for about 5s until the LED indicator changes in a slow flash and release.

Check the Device Status

External Switch Type: The device's factory default is the rocker switch. To switch to the momentary switch, you need to short press the device button three times. If the blue light flashes three times, it means the switch is successful.

Add Device

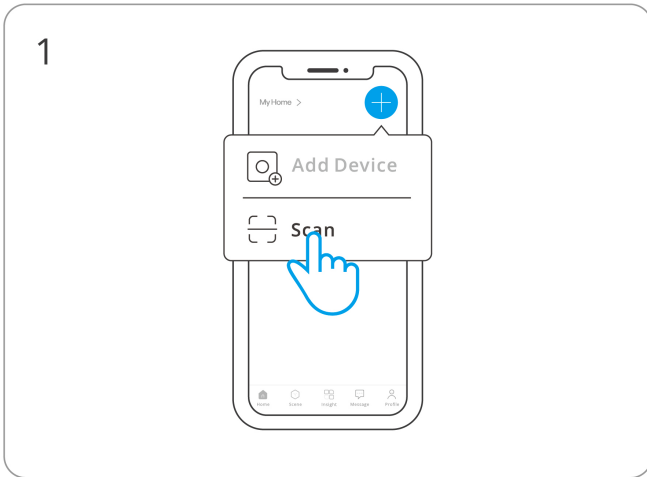
1. Download the eWeLink App

Please download the "eWeLink" App from [Google Play Store](#) or [Apple App Store](#).

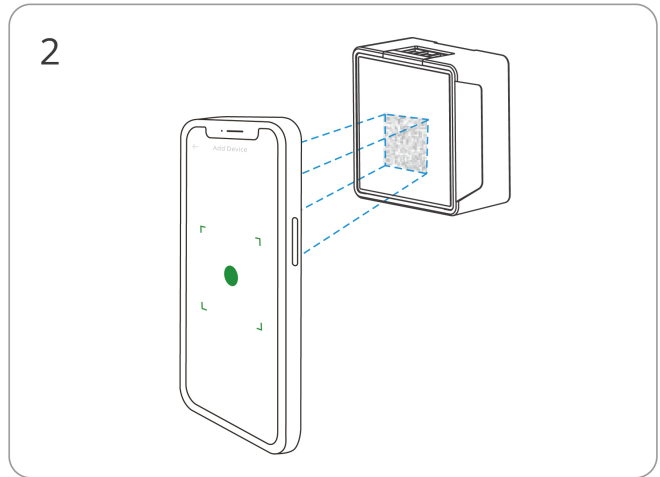


2. Add SONOFF Zigbee gateway

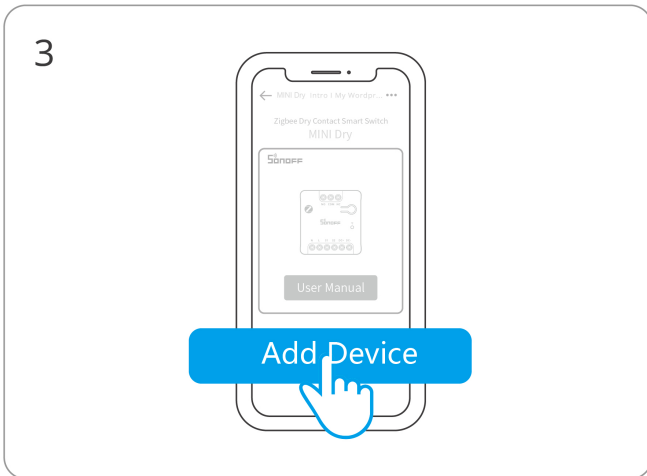
3. Scan QR code to add the device



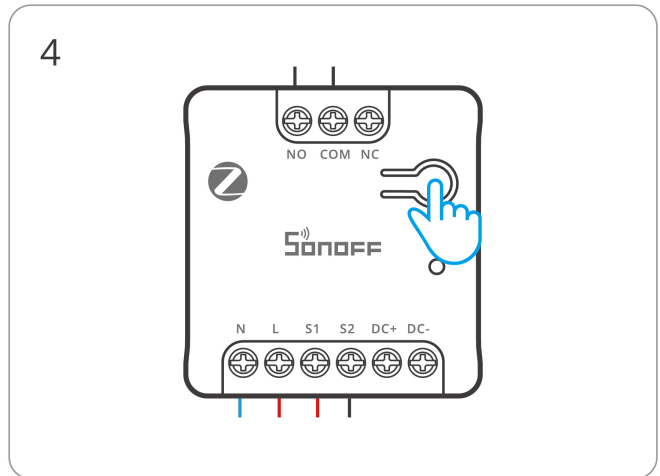
Enter "Scan".



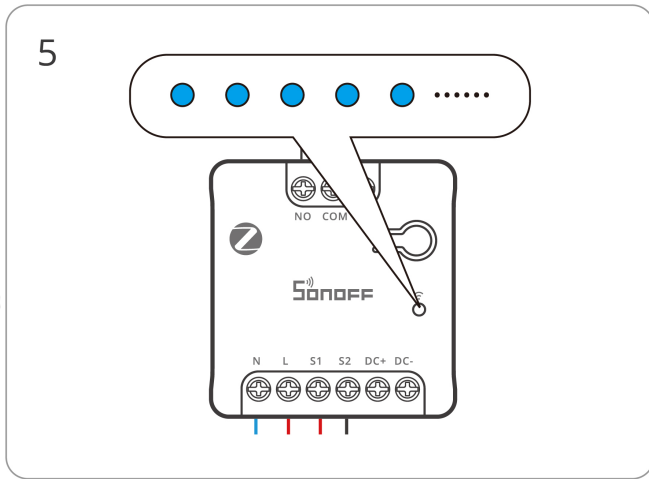
Scan the QR code on the device.



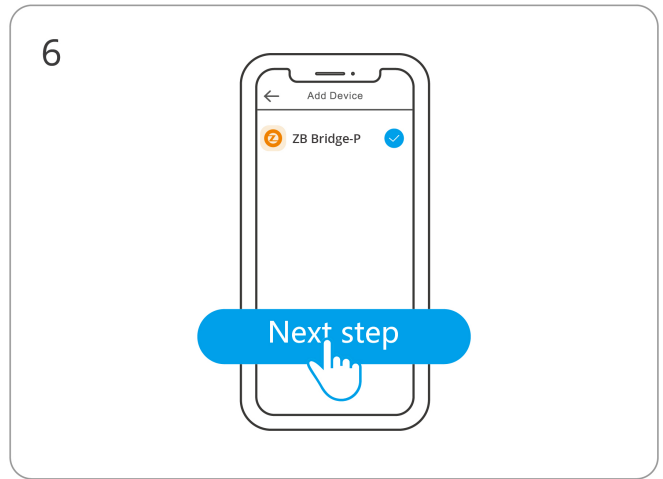
Select "Add Device".



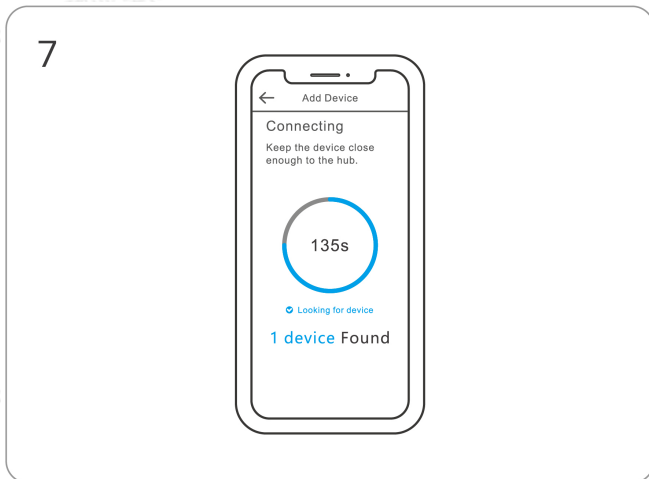
(If the device exits pairing mode)
Long press the button for 5 seconds.



5 Check LED indicator flashing status (Slow flashing).



6 Select Zigbee gateway.



7 Wait until the addition is done.

Compatible SONOFF Gateways

Recommended SONOFF gateway models: ZBBridge-P, ZBBridge-U, NSPanel Pro, iHost.

Other compatible SONOFF gateway models: ZBDongle-P, ZBDongle-E.

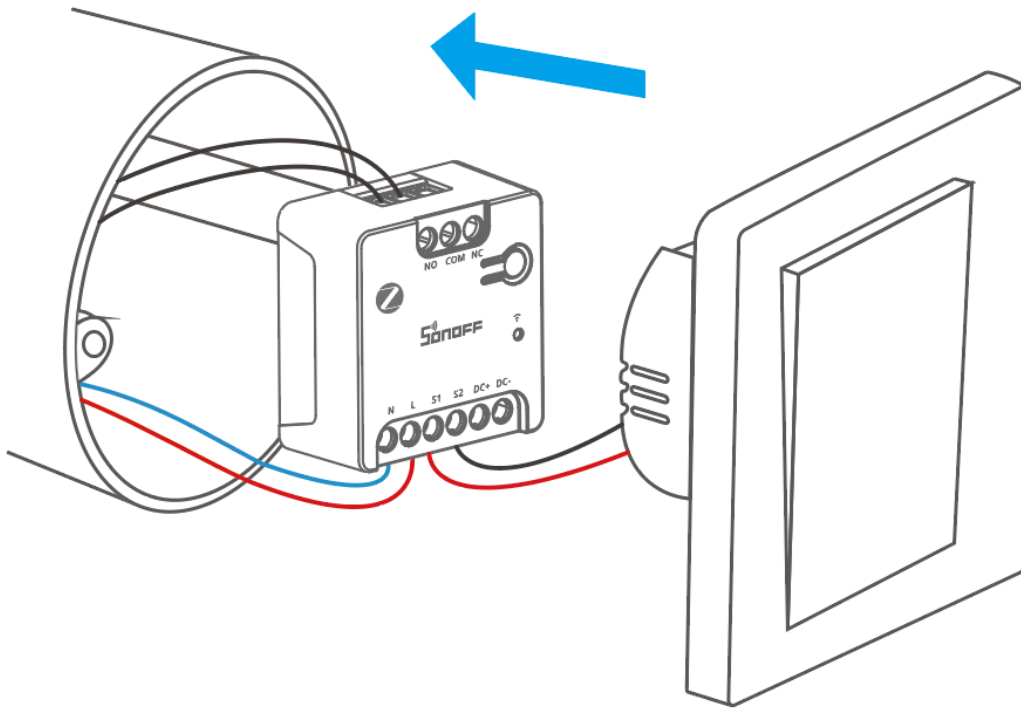
Third-party compatible gateway models:

Amazon Gateway Model: Echo Plus 2nd, Echo Show 2nd, Echo 4th Gen

Samsung Gateway Model: SmartThings hub V3

*Other gateways supporting ZigBee3.0 wireless protocol. Detailed information is in accordance with the final product.

Install the device in the mounting box



Factory Reset

Trigger conditions (any one condition met)

- Press and hold the device button for 10 seconds.
- Rapidly toggle the external switch 10 times (all settings will reset to factory defaults except the type of external switch).
- Delete the device on the App.

FCC compliance statement

Responsible Party Name: SONOFF TECHNOLOGY LLC

Address: 14777 NE 40th St, Suite 201 Bellevue, WA 98007

Email Address: usres@itead.cc FCC ID: 2APN5-MINIZBD

1. This device complies with part 15 of the FCC Rules. Operation is subject to the following two conditions:

(1) This device may not cause harmful interference, and

(2) This device must accept any interference received, including interference that may cause undesired operation.

2. Changes or modifications not expressly approved by the party responsible for compliance could void the user's authority to operate the equipment.

Note: This equipment has been tested and found to comply with the limits for a Class B digital device, pursuant to part 15 of the FCC Rules. These limits are designed to provide reasonable protection against harmful interference in a residential installation. This equipment generates, uses and can radiate radio frequency energy and, if not installed and used in accordance with the instructions, may cause harmful interference to radio communications. However, there is no guarantee that interference will not occur in a particular installation. If this equipment does cause harmful interference to radio or television reception, which can be determined by turning the equipment off and on, the user is encouraged to try to correct the interference by one or more of the following measures:

—Reorient or relocate the receiving antenna.

—Increase the separation between the equipment and receiver.

—Connect the equipment into an outlet on a circuit different from that to which the receiver is connected.

—Consult the dealer or an experienced radio/TV technician for help.

FCC Radiation Exposure statement:

This equipment complies with FCC radiation exposure limits set forth for an uncontrolled environment.

This equipment should be installed and operated with a minimum distance of 20 cm between the radiator and your body.

This transmitter must not be co-located or operating in conjunction with any other antenna or transmitter.

EU Declaration of Conformity

Hereby, Shenzhen Sonoff Technologies Co., Ltd. declares that the radio equipment type MINI-ZBD is in compliance with Directive 2014/53/EU. The full text of the EU declaration of conformity is available at the following internet address: <https://sonoff.tech/compliance/>

For CE frequency

EU Operating Frequency Range:

Zigbee: 2405–2480 MHz

EU Output Power:

Zigbee ≤ 10dBm

Under normal use of condition, this equipment should be kept at a separation distance of at least 20 cm between the antenna and the body of the user.

WEEE Disposal and Recycling Information



WEEE Disposal and Recycling Information All products bearing this symbol are waste electrical and electronic equipment (WEEE as in directive 2012/19/EU) which should not be mixed with unsorted household waste. Instead, you should protect human health and the environment by handing over your waste equipment to a designated collection point for the recycling of waste electrical and electronic equipment, appointed by the government or local authorities. Correct disposal and recycling will help prevent potential negative consequences to the environment and human health. Please contact the installer or local authorities for more information about the location as well as terms and conditions of such collection points.

Scatola	Manuale
PAP 21	PAP 22
Carta	Carta
RACCOLTA DIFFERENZIATA	

Verifica le disposizioni del tuo Comune.

Separa le componenti e conferiscile in modo corretto.

SONOFF

Manufacturer: Shenzhen Sonoff Technologies Co., Ltd.

Address: 3F & 6F, Bldg A, No. 663, Bulong Rd, Shenzhen, Guangdong, 518000, China

Service email: support@itead.cc

Website: sonoff.tech

Made in China



Points de collecte sur www.quefairedemesdechets.fr
Privilégiez la réparation ou le don de votre appareil !

