

User Manual S61STPF (EN)



Matter Over WiFi Smart Plug

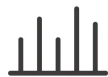
User Manual V1.0

Introduction

The S61s is a smart plug supporting 2.4GHz Wi-Fi connectivity, compatible with Type E and Type F sockets, with a maximum load current of 16A. Its fire-resistant housing design ensures electrical safety. Beyond power consumption tracking and electricity cost calculation, it features overload protection and overcharge protection. Through integration with the Matter ecosystem, the S61s seamlessly connects with various smart home systems.



Matter Compatibility



Energy Overview



Electricity Bill
Tracking



Overload Protection



Overcharge
Protection



Timer Schedule



Smart Scene



Flame-retardant
Materials

① Button

- Single press: Turn on/off the smart device.
- Press and hold for 5 seconds: Device enters the pairing mode. (Pairing time 10 minutes)

② Wi-Fi LED indicator (Blue)

eWeLink Mode

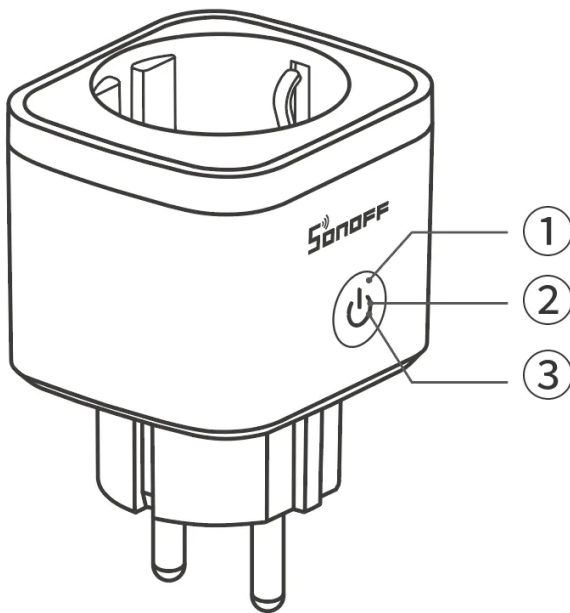
- Flashes two short and one long: Device is in pairing mode.
- Keeps off: Device is online.
- Flashes once: Device is offline.
- Flashes twice: Device is connected to the router but not to the cloud.

Matter Mode

- Flashes two short and one long: Device is in pairing mode.
- Keeps off: Device is online.
- Flashes once: Device is offline.

③ Power Indicator (Red)

- Light on: Device is powered on.
- Light off: Device is powered off.



Platform Certification



Specification

Product name	S61s
Product series	iPlug Gen2 Series
Product type	Matter Over WiFi Smart Plug
Model	S61STPF
MCU	BK7238
Rating	100V–240V~ 50/60Hz 16A Max Resistive load μ
Max.load	3840W
Wi-Fi	IEEE 802.11 b/g/n 2.4GHz
Net weight	84.9g
Product dimension	56x50x64.3mm
Color	White
Casing material	PC
Applicable place	Indoor
Working height	Less than 2000m
Working temperature	10T40 (-10°C~40°C)
Working humidity	5–95%RH, non–condensing
Certification	CE/RoHS

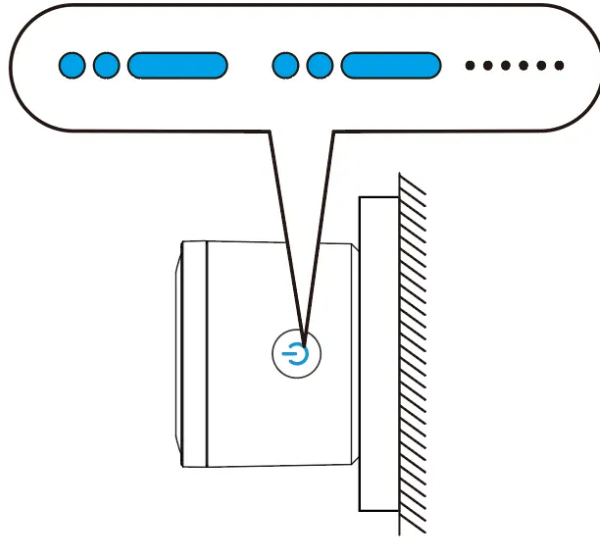


WARNING

To ensure the safety of your electrical installation, it's essential that either a Miniature Circuit Breaker (MCB) or a Residual Current operated Circuit-breaker with Integral Overcurrent protection (RCBO) with an electrical rating of 16A has been installed before the S61s.

Power on

When the device is used for the first time, it will enter pairing mode by default after being powered on. At this time, the Wi-Fi LED indicator will flash in a pattern of "two short and one long."



ⓘ The device will exit the Pairing Mode if not paired within 10mins. If you want to enter this mode, please long press button for about 5s until the Wi-Fi LED indicator changes in a cycle of two short and one long flash and release.

Matter Ecosystem User Guide

Open the Matter-compatible App and scan the Matter QR code on the device to add it.



Add to Apple
via Matter



Add to Google
via Matter



Add to Alexa
via Matter



Add to
SmartThings via
Matter



Add to Home
Assistant via
Matter

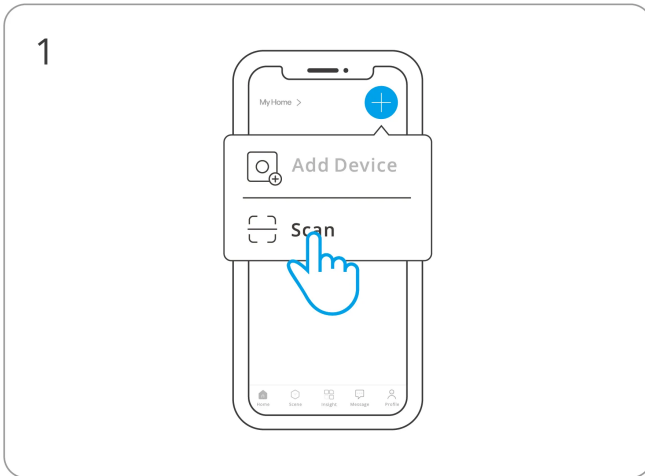
eWeLink Ecosystem User Guide

1. Download the eWeLink App

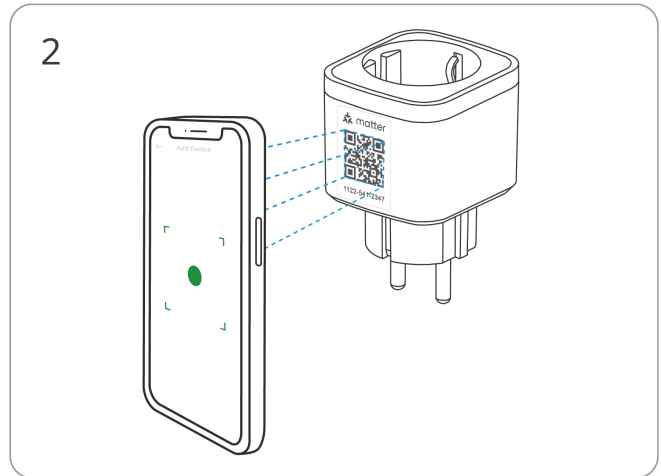
Please download the "eWeLink" App from Google Play Store or Apple App Store.



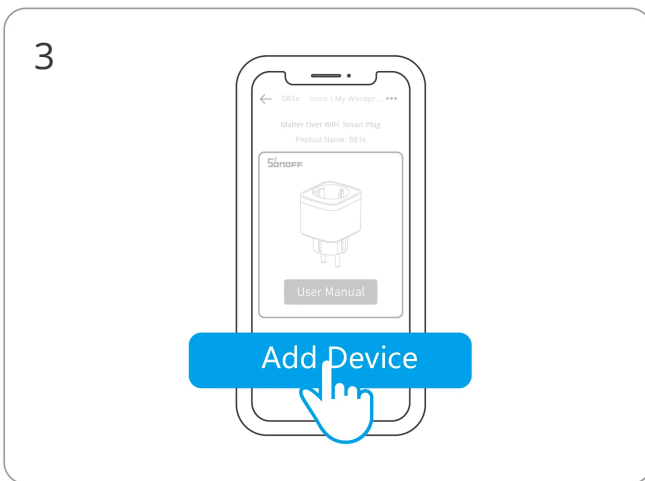
2. Add Device



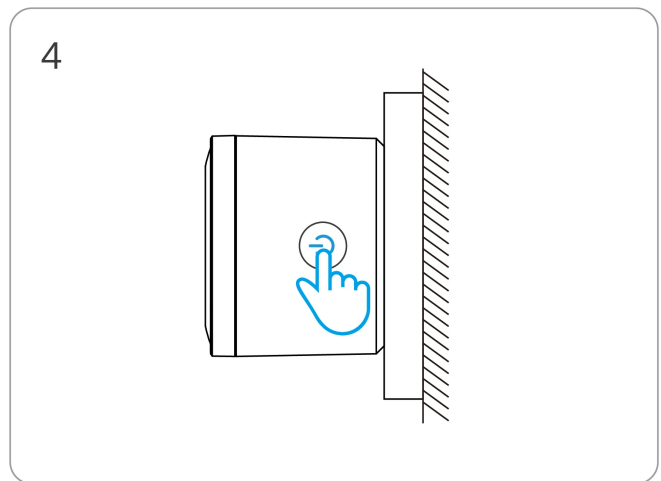
Enter "Scan"



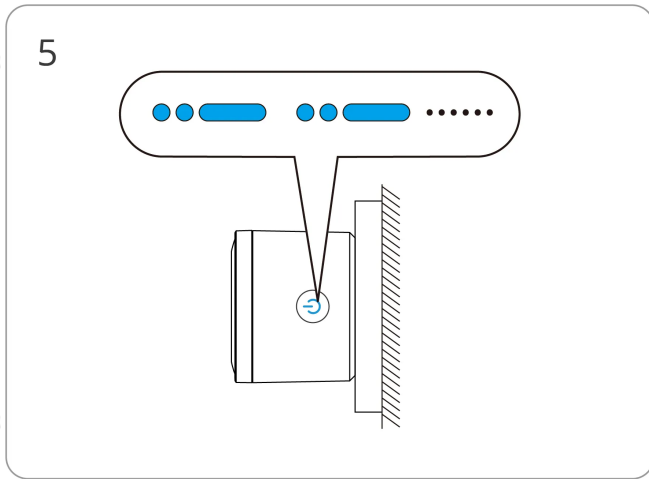
Scan the QR code on the device



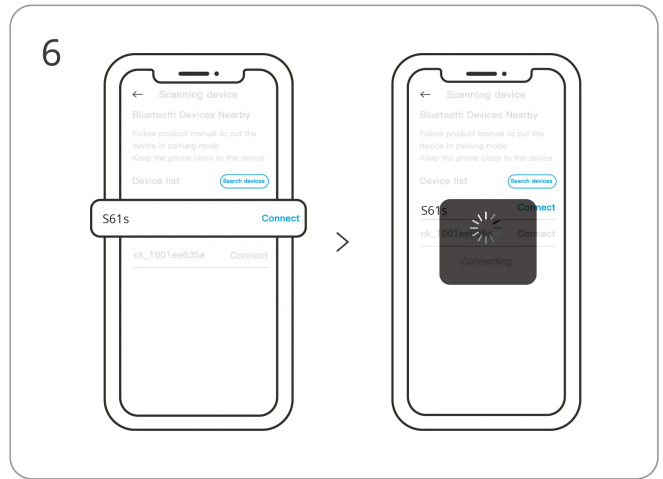
Select "Add Device"



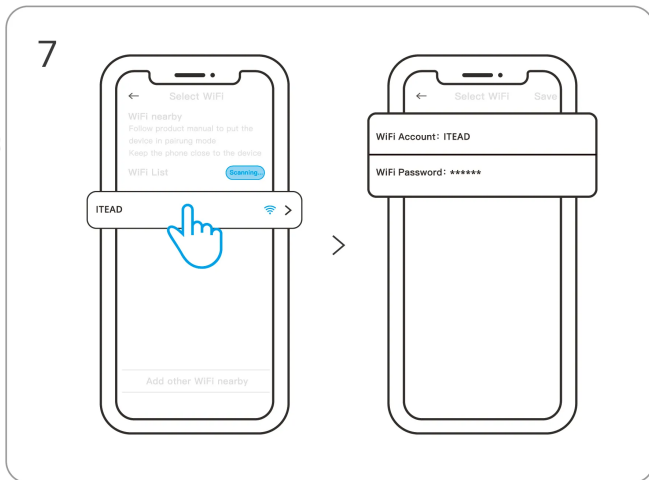
(If the device exits pairing mode)
Long press the button for 5 seconds



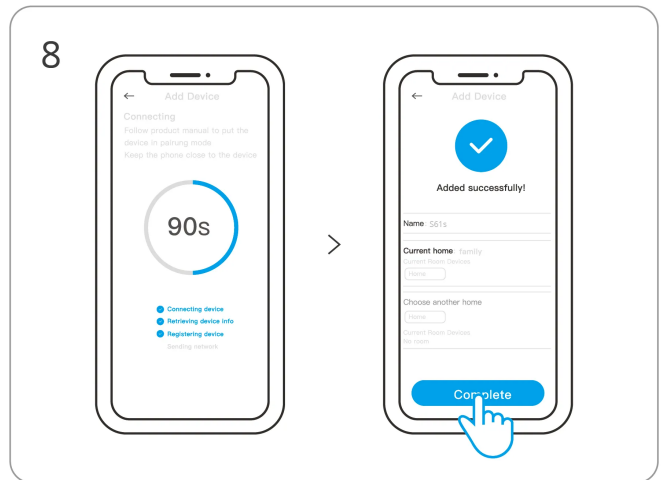
5
Check LED indicator flashing status
(Two short and one long)



6
Search for the device and start connecting



7
Select the "Wi-Fi" network and enter the password



8
Device "Added completely"

Factory Reset (Dual Ecosystem)

Trigger conditions (any one condition met)

- After "Delete the Device" in the eWeLink App
- For devices previously successfully added to eWeLink, perform a new pairing using a different eWeLink account
- For devices previously successfully added in Matter, perform a new Bluetooth Pairing through Matter

EU Declaration of Conformity

Hereby, Shenzhen Sonoff Technologies Co., Ltd. declares that the radio equipment type S61STPF is in compliance with Directive 2014/53/EU. The full text of the EU declaration of conformity is available at the following internet address: <https://sonoff.tech/compliance/>

For CE Frequency

EU Operating Frequency Range:

Wi-Fi: 802.11 b/g/n20 2412–2472 MHz

BLE: 2402–2480 MHz

EU Output Power:

Wi-Fi 2.4G \leq 20dBm

BLE \leq 20dBm

Under normal use of condition, this equipment should be kept a separation distance of at least 20 cm between the antenna and the body of the user.

WEEE Disposal and Recycling Information



WEEE Disposal and Recycling Information All products bearing this symbol are waste electrical and electronic equipment (WEEE as in directive 2012/19/EU) which should not be mixed with unsorted household waste. Instead, you should protect human health and the environment by handing over your waste equipment to a designated collection point for the recycling of waste electrical and electronic equipment, appointed by the government or local authorities. Correct disposal and recycling will help prevent potential negative consequences to the environment and human health. Please contact the installer or local authorities for more information about the location as well as terms and conditions of such collection points.



WARNING

1. Risk of electric shock, this product is not a toy and not intended for use by children. For adult use only.
2. The appliance is suitable for moderate climates only.
3. The ventilation must not be impaired by covering the appliance with items such as newspapers, table cloths, curtains, etc.
4. Naked flame sources, such as candles, must not be placed on the appliance.

Scatola	Manuale
PAP 21	PAP 22
Carta	Carta
RACCOLTA DIFFERENZIATA	
Verifica le disposizioni del tuo Comune.	
Separa le componenti e conferiscile in modo corretto.	



Manufacturer: Shenzhen Sonoff Technologies Co., Ltd.

Address: 3F & 6F, Bldg A, No. 663, Bulong Rd, Shenzhen, Guangdong, 518000, China

Service email: support@itead.cc Website: sonoff.tech

Made in China



FR

Cet appareil se recycle

À DÉPOSER EN MAGASIN



OU

À DÉPOSER EN DÉCHÈTERIE



Points de collecte sur www.quefairedemesdechets.fr
Privilégiez la réparation ou le don de votre appareil !

