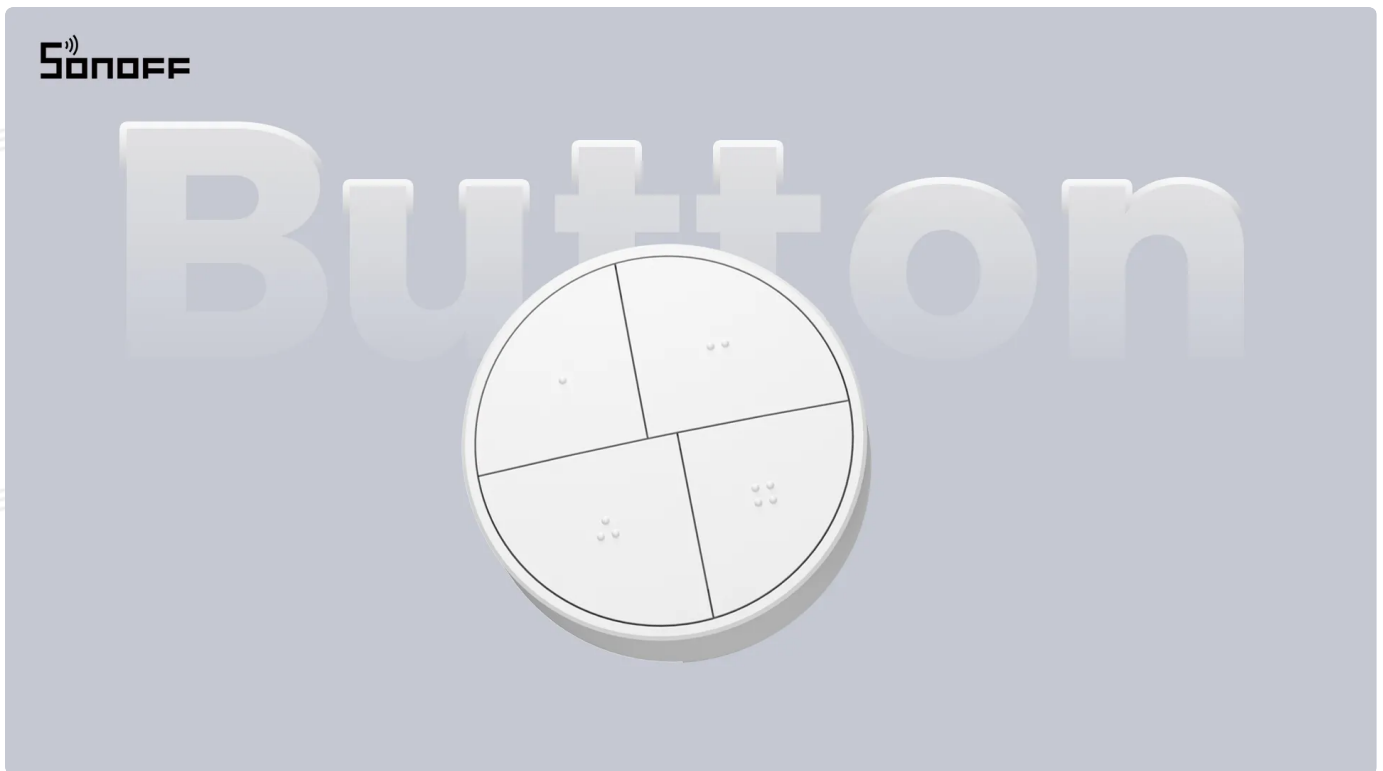


User Manual SNZB-01M (EN)



Zigbee Smart Scene Button

User Manual V1.0

Introduction

The Orb 4-In-1 is a four-button scene switch that supports two modes: Zigbee Mode and eWeLink-Remote Mode. Each button allows single, double, triple, and long press actions to quickly trigger scenes, with up to 16 scenes customizable in the eWeLink app. Certain smart bulbs can also be controlled directly via TouchLink or Bindings. Stick-on mounting is supported for hassle-free installation—no wiring required.



Dual Mode



Tap to Control



Smart Scene



Magnetic Installation

① Button

- Single-click / Double-click / Triple-click / Long press: Triggers the corresponding smart scene

*The Triple-click is only supported in Zigbee mode

② LED indicator

Zigbee Mode

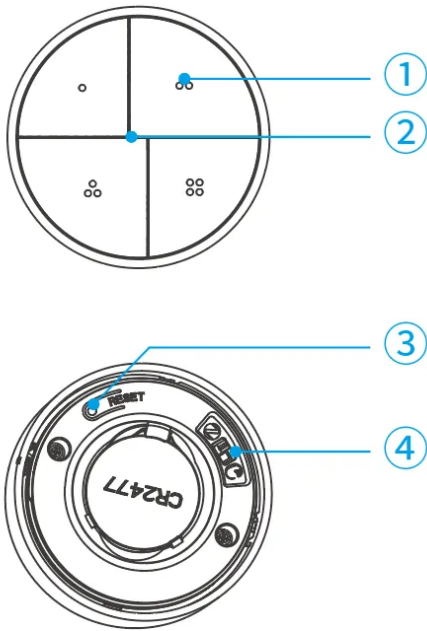
- Slow flash: Device is in Zigbee pairing state
- Steady on for 3 seconds: Zigbee pairing successful

③ Reset Button

- Press and hold for 5 seconds: Device enters Zigbee pairing mode (pairing duration: 3 minutes)


④ Slide Switch

- **Zigbee Mode:** The device can be added to a Zigbee gateway and used as a Zigbee sub-device to create scenes
- **eWeLink-Remote Mode:** The device can be added to the eWeLink-Remote gateway and used as an eWeLink-Remote sub-device to create scenes

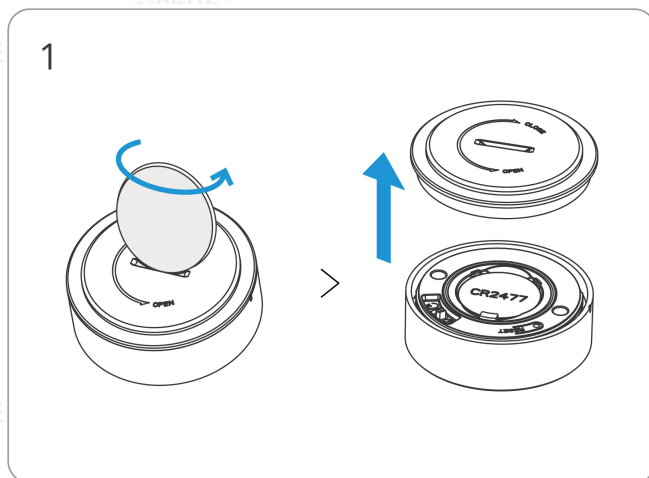


Specification

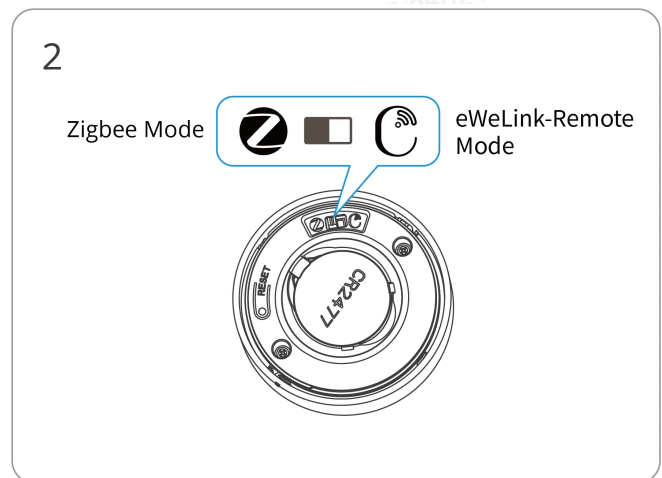
Product name	Orb 4-In-1
Product series	Fusion series
Product type	Smart Scene Button
Model	SNZB-01M

MCU	TLSR8656F512ET32
Input	3V 
Battery model	CR2477
Zigbee	IEEE 802.15.4
Net weight	53g (Includes battery)
Color	White
Product dimension	φ50x22.5mm
Casing material	PC
Applicable place	Indoor
Working temperature	-10°C ~ 60°C
Working humidity	5-95%RH, non-condensing
Certification	CE/FCC/RoHS

Mode Selection



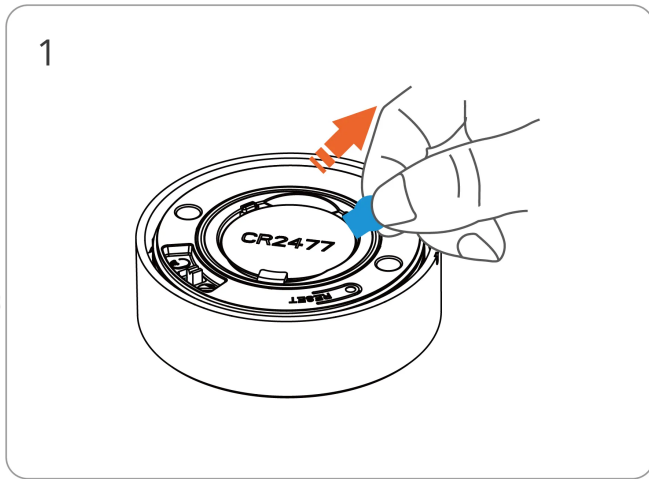
Use a coin to unscrew the battery cover.



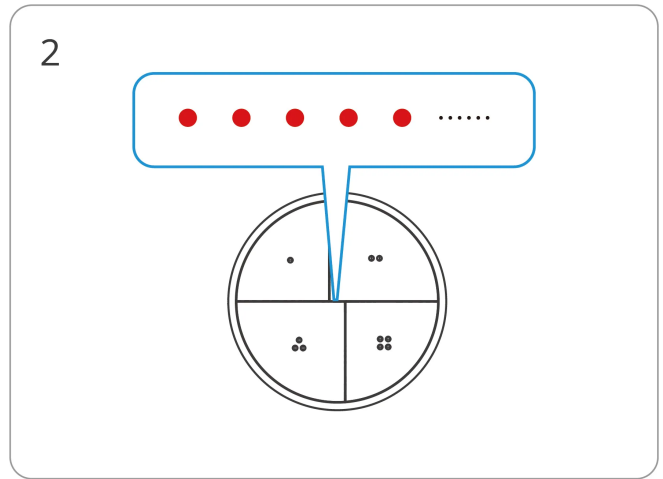
Toggle the slide switch to select either Zigbee Mode or eWeLink-Remote Mode.

(Default Zigbee mode)

Power On



Take out the battery insulation sheet.

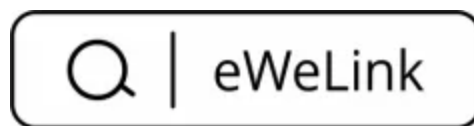


In Zigbee Mode, after powering on the device for the first time, it will enter the pairing status by default and the signal indicator "flashes slowly".

⚠ The device will exit the pairing status if not paired within 3 minutes. If you want to enter again, please long-press the reset button for about 5s until the signal indicator "flashes slowly".

Download the eWeLink App

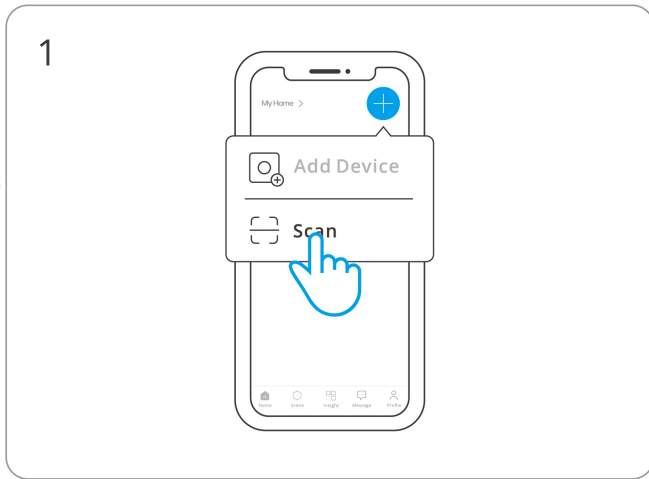
Please download the "eWeLink" App from [Google Play Store](#) or [Apple App Store](#).



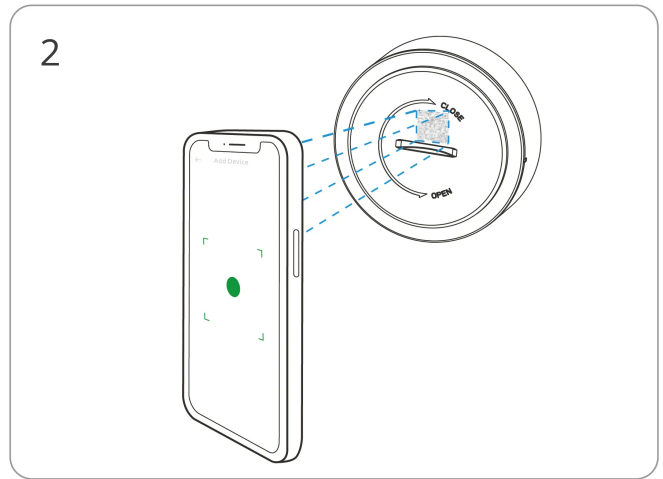
Zigbee Mode

1. Add SONOFF Zigbee Gateway

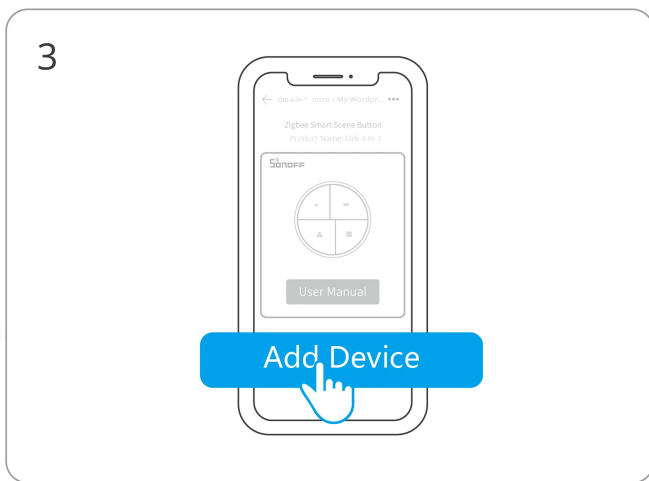
2. Add Device



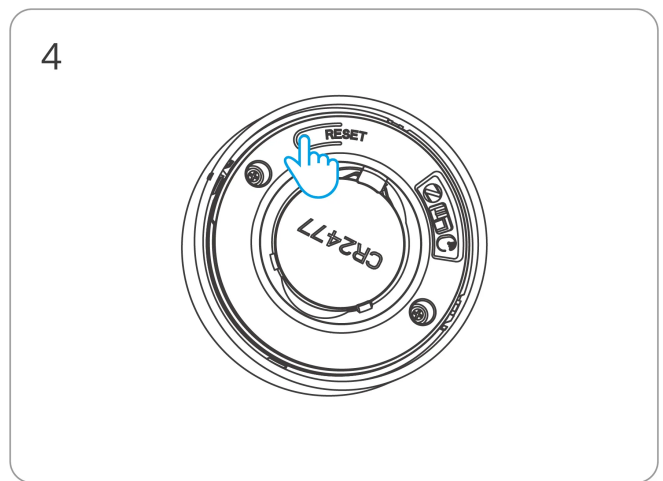
Enter "Scan"



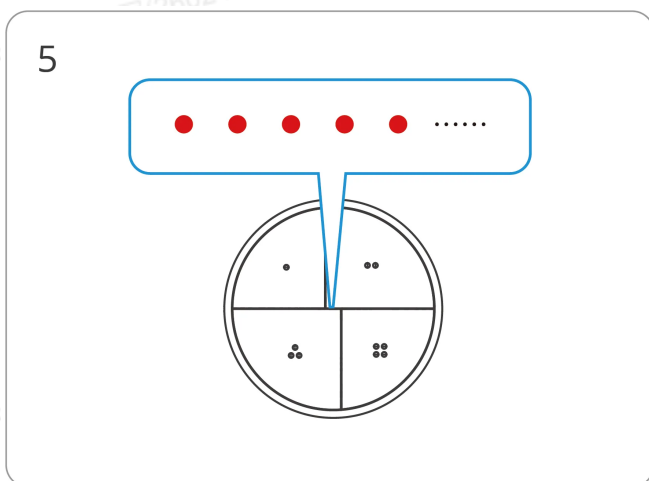
Scan the QR code on the device



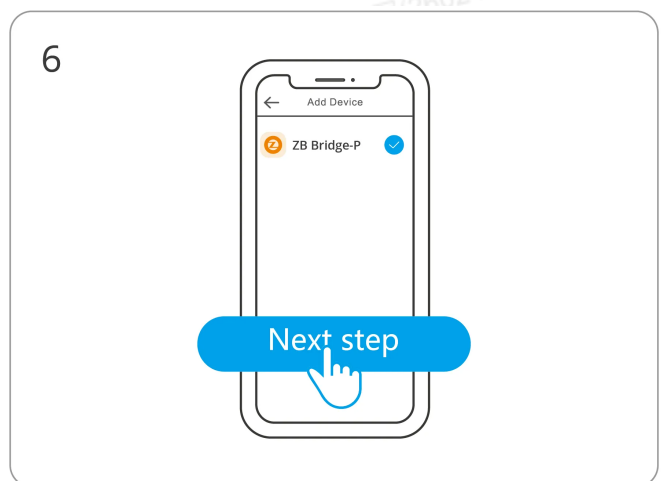
Select "Add Device"



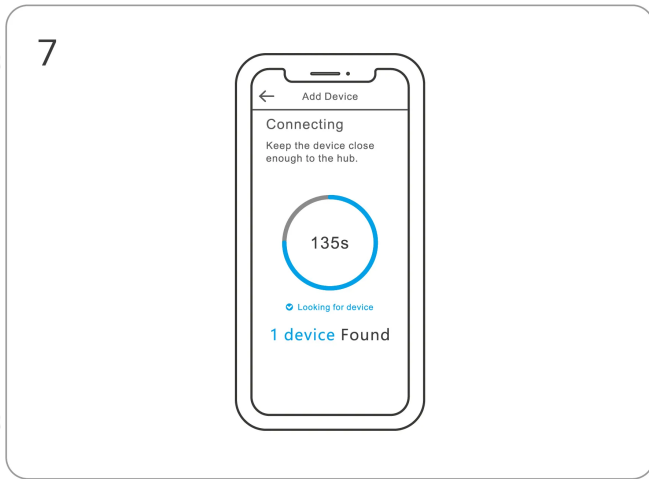
(If the device exits pairing mode)
Long press the button for 5 seconds



Check LED indicator flashing status (Slow flash)



Select Zigbee gateway



Wait until the addition is done.

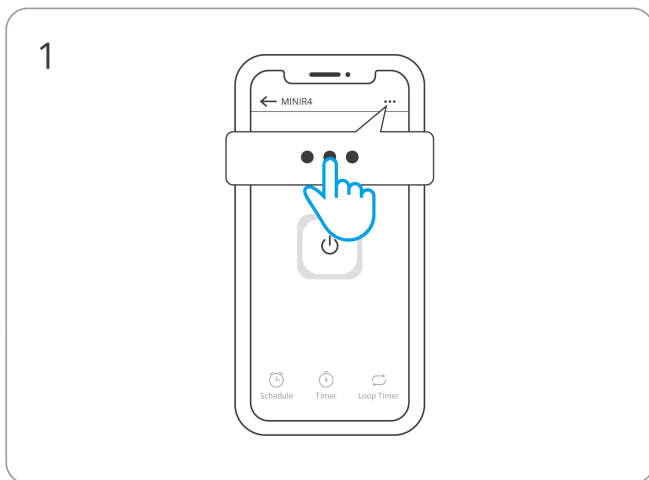
3. Compatible SONOFF Gateways

Recommended SONOFF gateway models: ZBBridge-P, ZBBridge-U, NSPanel Pro, iHost.

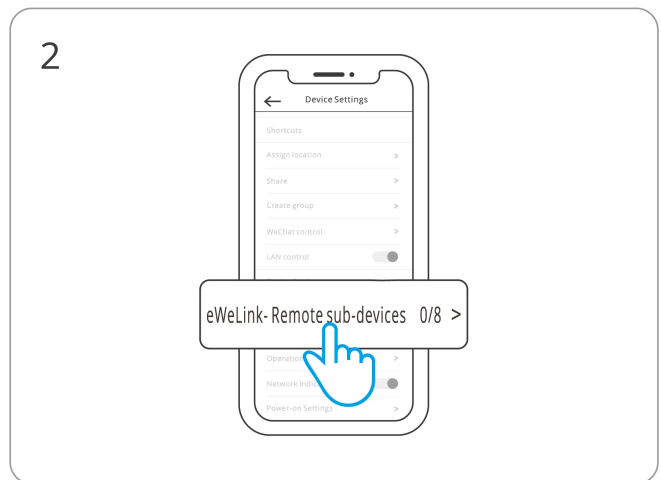
Other compatible SONOFF gateway models: ZBDongle-P, ZBDongle-E, Dongle-M, Dongle-PMG24, Dongle-LMG21

eWeLink-Remote Mode

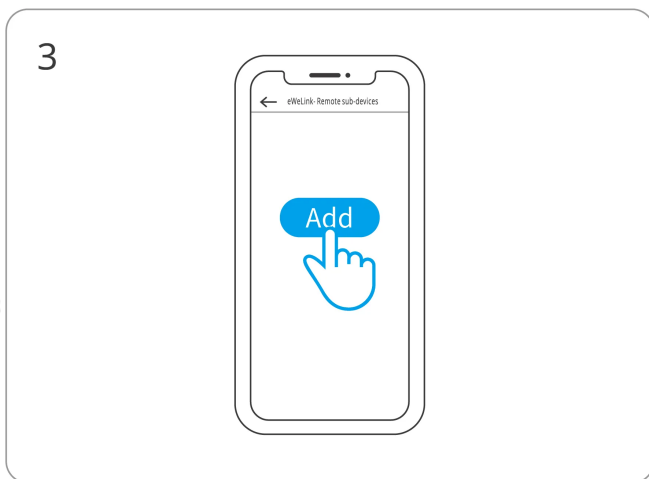
1. Add Device



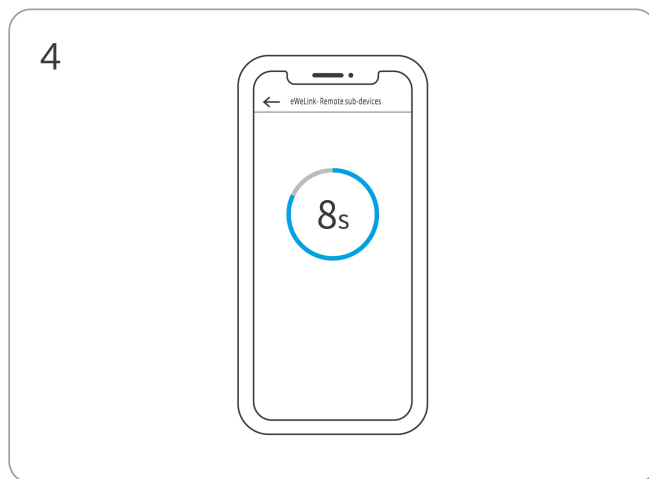
Click "...\" on the homepage of the supporting gateway



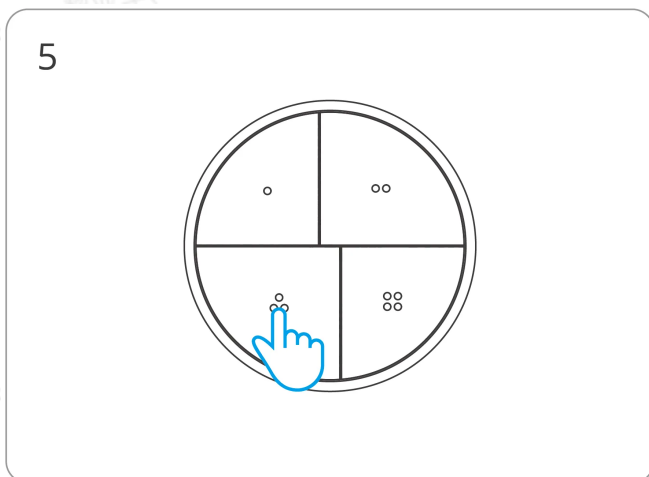
Click "eWeLink-Remote-devices" in the Device Settings



Click "Add" button, and eWeLink-Remote gateway will enter the learning mode



Click the sub-device button within 10 seconds



Click any button on the sub-device to add the device.

2. Compatible eWeLink-Remote Gateways

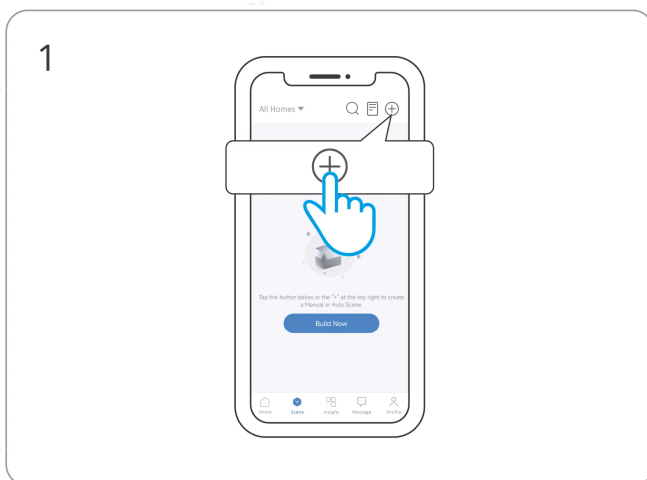


<https://help.sonoff.tech/docs/How-to-pair-with-eWeLinkRemote-Gateway?search=1>

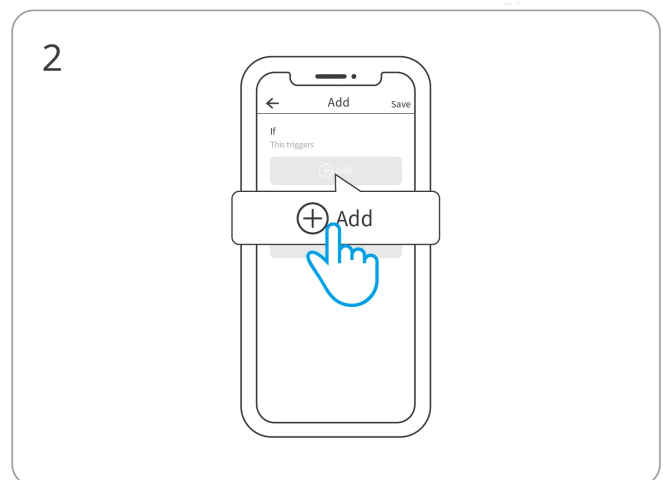
This device is connected to a regular switch and used together with a product that provides eWeLink-Remote gateway function. Click on the image or enter the website address to view compatible products.

Smart Scenes Settings

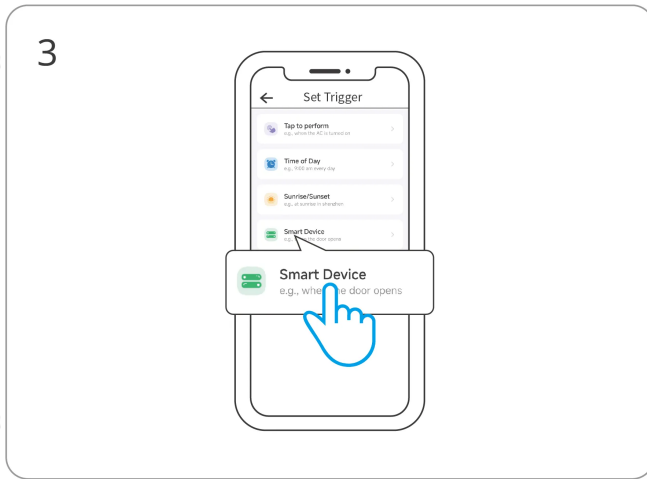
Orb 4-In-1 can only be used as a triggering device, rather than an executing device.



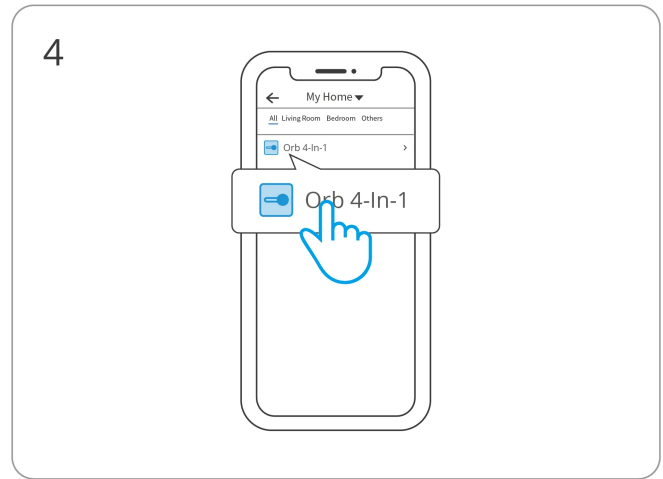
Select "+" on the scene page to add a new scene



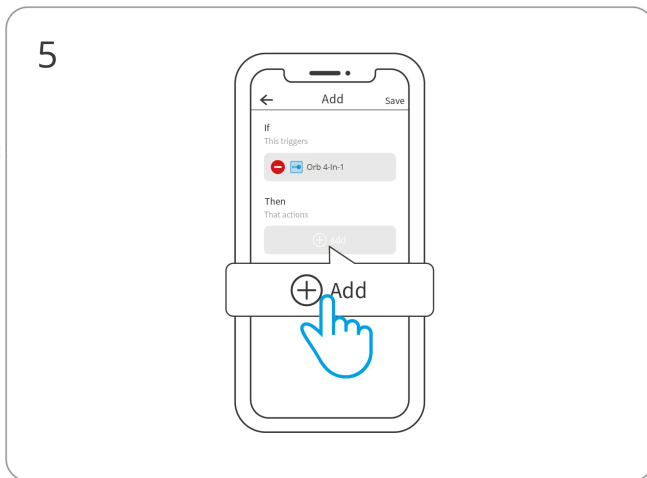
Select "Add" triggers



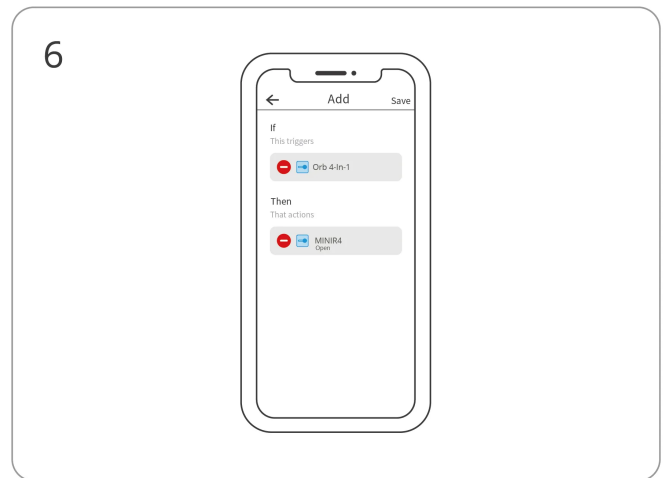
Select "Smart Device"



Select "S-MATE2" and follow the steps to configure the conditions



Add the linked device



Complete the scene setup

Other Operation Modes

TouchLink

TouchLink is a convenient pairing function of the Orb 4-In-1. It simplifies the device pairing process, allowing direct connection and control with smart bulbs that support the TouchLink protocol, without the need for a gateway or complex configuration.

For detailed operation, see: <https://help.sonoff.tech/docs/How-to-Connect-the-Orb-4In1-to-the-TouchLink-device>

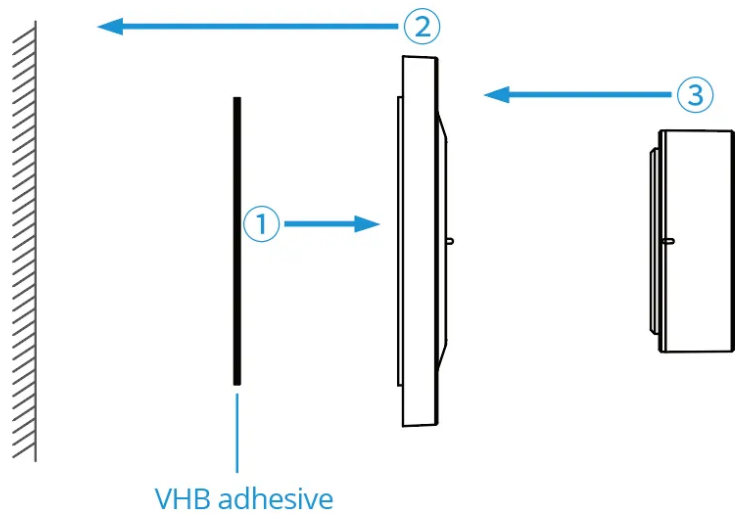
Bindings

Zigbee Binding is a technology that allows two or more Zigbee devices to communicate directly. By using the Binding function, the Orb 4-In-1 can be bound directly to smart lights, enabling local control of switching, brightness adjustment, and other core functions. This is particularly suitable for scenarios requiring high stability and fast response.

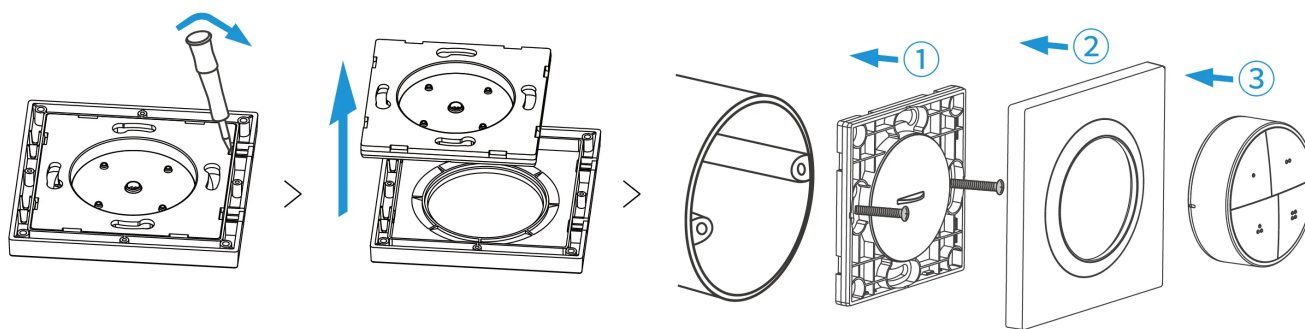
For detailed operation, see: <https://help.sonoff.tech/docs/How-to-Use-Orb-4in1-with-Home-Assistant-via-Bindings>

Base Mounting

Method 1: Stick with VHB adhesive.



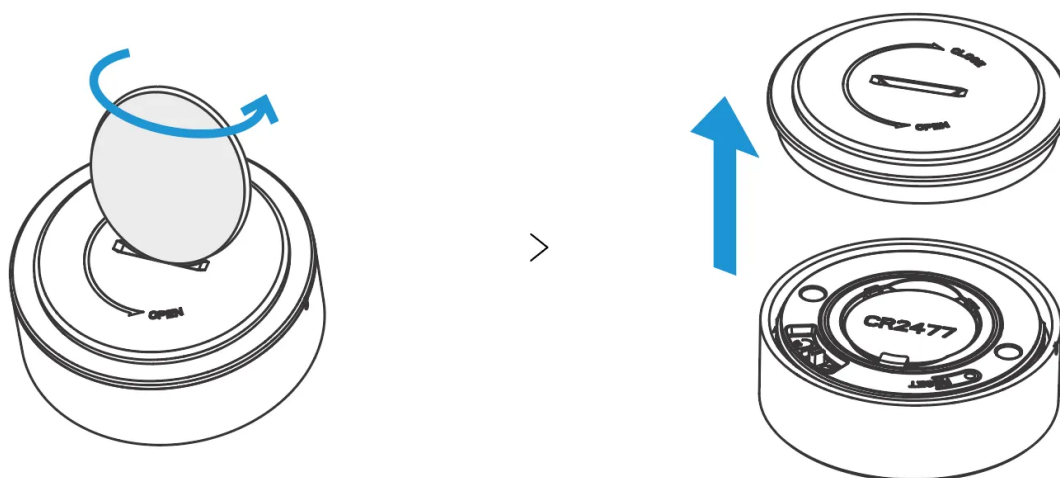
Method 2: Fixed to the mounting box with screws.



⚠ The device is only suitable for installation at a height of ≤ 2 meters.

Replace the Battery

Use a coin to twist and remove the battery cover and replace the battery.



Factory Reset

Long press the device reset button for 5 seconds to restore factory settings. This will erase all Zigbee network information, including TouchLink and Bindings, and the device will re-enter Zigbee pairing mode.

FCC compliance statement

Responsible Party Name: SONOFF TECHNOLOGY LLC

Address: 14777 NE 40th St, Suite 201 Bellevue, WA 98007

Email Address: usres@itead.cc FCC ID: 2APN5-SNZB01M

1. This device complies with part 15 of the FCC Rules. Operation is subject to the following two conditions:

- (1) This device may not cause harmful interference, and
- (2) This device must accept any interference received, including interference that may cause undesired operation.

2. Changes or modifications not expressly approved by the party responsible for compliance could void the user's authority to operate the equipment.

Note: This equipment has been tested and found to comply with the limits for a Class B digital device, pursuant to part 15 of the FCC Rules. These limits are designed to provide reasonable protection against harmful interference in a residential installation. This equipment generates, uses and can radiate radio frequency energy and, if not installed and used in accordance with the instructions, may cause harmful interference to radio communications. However, there is no guarantee that interference will not occur in a particular installation. If this equipment does cause harmful interference to radio or television reception, which can be determined by turning the equipment off and on, the user is encouraged to try to correct the interference by one or more of the following measures:

- Reorient or relocate the receiving antenna.
- Increase the separation between the equipment and receiver.
- Connect the equipment into an outlet on a circuit different from that to which the receiver is connected.
- Consult the dealer or an experienced radio/TV technician for help.

FCC Radiation Exposure statement:

This equipment complies with FCC radiation exposure limits set forth for an uncontrolled environment.

This equipment should be installed and operated with a minimum distance of 20 cm between the radiator and your body.

This transmitter must not be co-located or operating in conjunction with any other antenna or transmitter.

EU Declaration of Conformity

Hereby, Shenzhen Sonoff Technologies Co., Ltd. declares that the radio equipment type SNZB-01M is in compliance with Directive 2014/53/EU. The full text of the EU declaration of conformity is available at the following internet address: <https://sonoff.tech/compliance/>

For CE frequency

EU Operating Frequency Range:

Zigbee: 2405–2480 MHz

BLE: 2402–2480 MHz

EU Output Power:

Zigbee≤10dBm

BLE≤10dBm

Under normal use of condition, this equipment should be kept at a separation distance of at least 20 cm between the antenna and the body of the user.

WEEE Disposal and Recycling Information



WEEE Disposal and Recycling Information All products bearing this symbol are waste electrical and electronic equipment (WEEE as in directive 2012/19/EU) which should not be mixed with unsorted household waste. Instead, you should protect human health and the environment by handing over your waste equipment to a designated collection point for the recycling of waste electrical and electronic equipment, appointed by the government or local authorities. Correct disposal and recycling will help prevent potential negative consequences to the environment and human health. Please contact the installer or local authorities for more information about the location as well as terms and conditions of such collection points.



WARNING

1. Do not ingest battery, Chemical Burn Hazard.
2. This product contains a coin/button cell battery. If the coin/button cell battery is swallowed, it can cause severe internal burns in just 2 hours and can lead to death.
3. Keep new and used batteries away from children.
4. If the battery compartment does not close securely, stop using the product and keep it away from children. If you think batteries might have been swallowed or placed inside any part of the body, seek immediate medical attention.

UL 4200A compliance statement

⚠ WARNING

- **INGESTION HAZARD:** This product contains a button cell or coin battery.
- **DEATH** or serious injury can occur if ingested.
- A swallowed button cell or coin battery can cause **Internal Chemical Burns** in as little as **2 hours**.
- **KEEP** new and used batteries **OUT OF REACH of CHILDREN**.
- **Seek immediate medical attention** if a battery is suspected to be swallowed or inserted inside any part of the body.



Warning: contains coin battery, The icon must be at least 7 mm in width and 9 mm in height and must be on the product display panel.

- Remove and immediately recycle or dispose of used batteries according to local regulations and keep away from children. Do NOT dispose of batteries in household trash or incinerate.
- Even used batteries may cause severe injury or death.
- Call a local poison control center for treatment information.
- Compatible battery type: CR2477
- Nominal battery voltage: 3V==
- Non-rechargeable batteries are not to be recharged.
- Do not force discharge, recharge, disassemble, heat above 60°C or incinerate. Doing so may result in injury due to venting, leakage or explosion resulting in chemical burns.
- Ensure the batteries are installed correctly according to polarity(+ and -)•
- Do not mix old and new batteries, different brands or types of batteries, such as alkaline, carbon-zinc, or rechargeable batteries.
- Remove and immediately recycle or dispose of batteries from equipment not used for an extended period of time according to local regulations.
- Always completely secure the battery compartment. If the battery compartment does not close securely, stop using the product, remove the batteries, and keep them away from children.

Scatola	Manuale	Pellicola	Borsa
PAP 21	PAP 22	PET 1	LDPE 4
Carta	Carta	Plastica	Plastica
RACCOLTA DIFFERENZIATA			
Verifica le disposizioni del tuo Comune.			
Separa le componenti e conferiscile in modo corretto.			



Manufacturer: Shenzhen Sonoff Technologies Co., Ltd.

Address: 3F & 6F, Bldg A, No. 663, Bulong Rd, Shenzhen, Guangdong, 518000, China

Service email: support@itead.cc

Website: sonoff.tech

Made in China



Points de collecte sur www.quefairedemesdechets.fr
Privilégiez la réparation ou le don de votre appareil !

