

# User Manual SNZB-06P24 (EN)

---

Introduction

LED Indicator Status

Specifications

Download the eWeLink App & Add the SONOFF Zigbee gateway.

Add Device

Compatible Zigbee Gateways

Effective Communication Range Verification

Detection Range

Installation

- ① Step One: Choose a Suitable Installation Location
- ② Step Two: Block Interference Zones
- ③ Step Three: Mount the Device
- ④ Step Four: Eliminate Interference in Unblocked Zones

Factory Reset

EU Declaration of Conformity

For CE frequency

WEEE Disposal and Recycling Information

WARNING

FCC compliance statement

**SONOFF**



Zigbee Human Presence Sensor

User Manual V1.0

## Introduction

SenseGuard Presence Core 24G is a human presence sensor based on microwave radar technology. It continuously emits microwave signals into the surrounding environment and detects changes in the reflected signals caused by human breathing, enabling accurate presence detection.

Operating at 24GHz, the device offers high precision and can detect even subtle movements. It supports masking of specific detection ranges or interference sources in designated areas, providing strong anti-interference performance. The built-in ambient light sensor enables more flexible and advanced smart scene conditions.

The device helps detect abnormal intrusion or presence and can promptly trigger linked devices such as cameras and alarms for precise security protection. It can also automatically control lights, fans, and other appliances based on human presence, delivering a more convenient and effortless smart living experience.



Presence Detection



Detection Area  
Setting



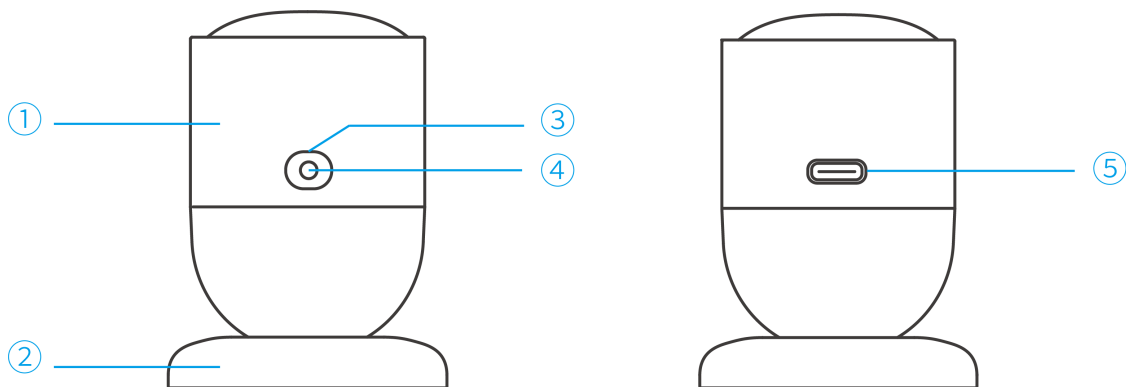
Interference Filtering



Light Sensing

\*The functional characteristics depend on the functionality of Zigbee gateway.

\*The equipment is only suitable for mounting at heights  $\leq 2$  m.




① Human presence sensor	② Magnetic base	③ Button
④ LED indicator	⑤ Power input interface (Type-C)	

## LED Indicator Status

Status	Description
Red flash slowly for 180 seconds	First-time power on/press and hold button for 5s to enter pairing mode

Keep on for 3s and then keep off	Paired successfully
Exit flashing slowly and keep off	Distribution failure/timeout
(after short pressing the button) Red flash twice quickly	Added to the gateway and online
Red flash twice quickly and once long, repeated for 30s	Abnormal Zigbee communication
Red flash 5 times	restored to factory setting
Blue keep on	Bluetooth connected status

## Specifications

Model	SNZB-06P24
MCU	TLSR8656
Input	5V  0.5A
Interface type	Type-C
Colour	White
Product dimension	44.2x44.2x59mm
Net weight	34.5g
Casing materials	PC+ABS
Wireless connection	Zigbee 3.0 IEEE802.15.4
Communication distance	Open area 100m
Applicable place	Indoor
Working temperature	-10°C ~ 60°C
Working humidity	0~90% RH, non-condensing
Working height	Less than 2000m

Certification

CE/FCC/RoHS

## Download the eWeLink App & Add the SONOFF Zigbee gateway.

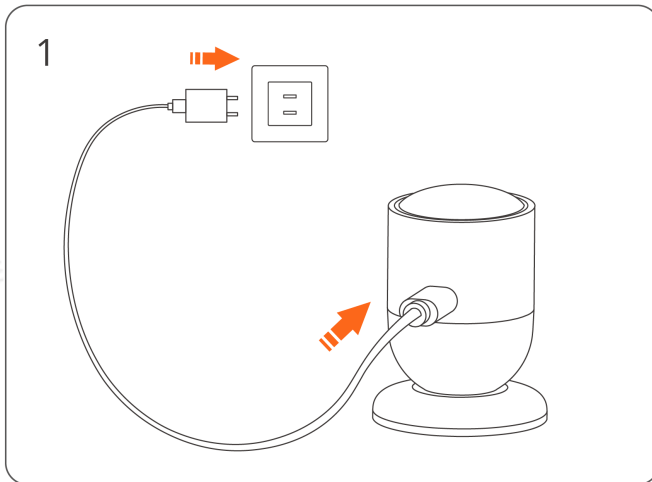
Please download the "eWeLink" App from Google Play Store or Apple App Store.

Q | eWeLink

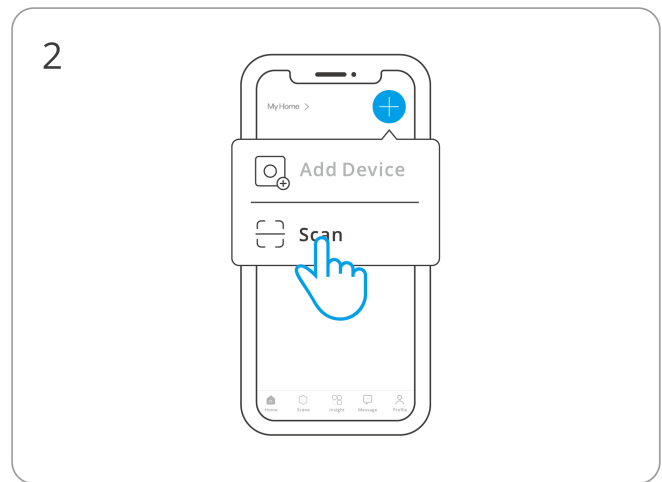


*\*The device supports other gateways using the Zigbee 3.0 protocol. Compatibility is subject to the actual product.*

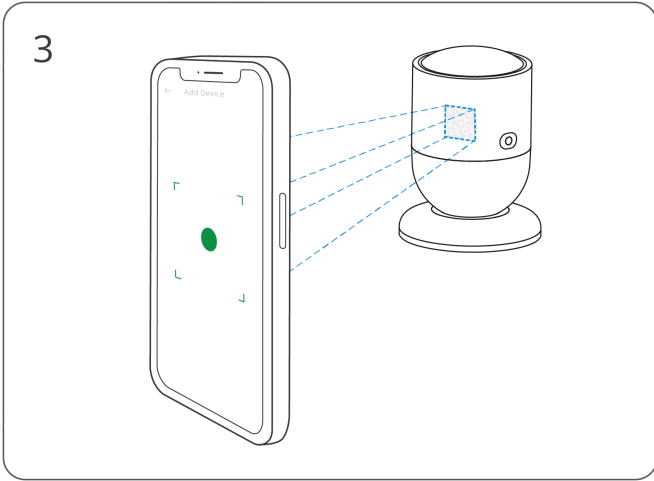
## Add Device



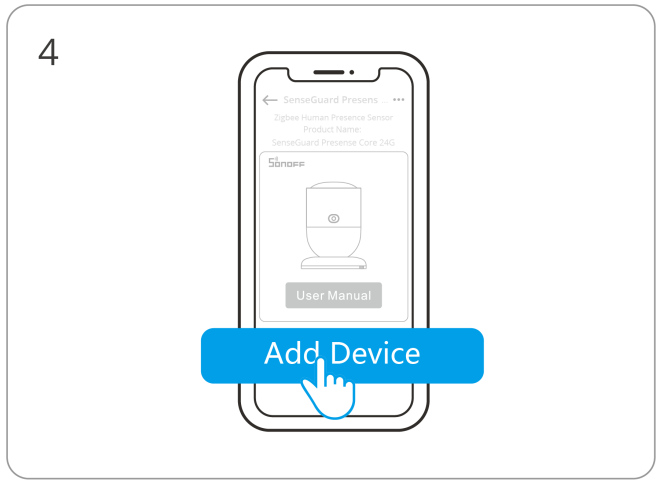
Power on the device



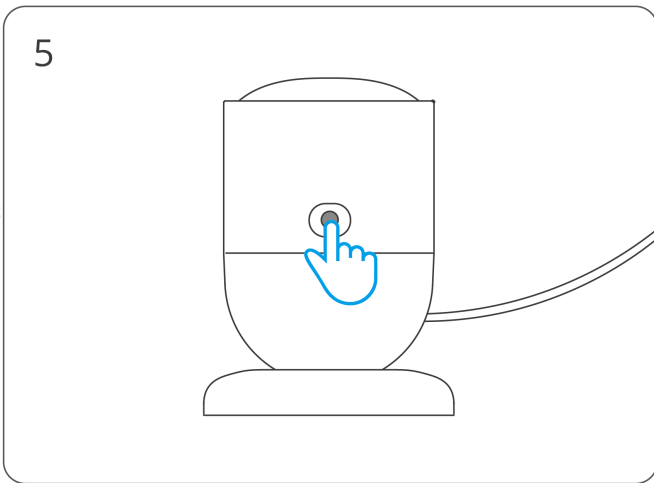
Enter "Scan"



Scan the QR code on the device

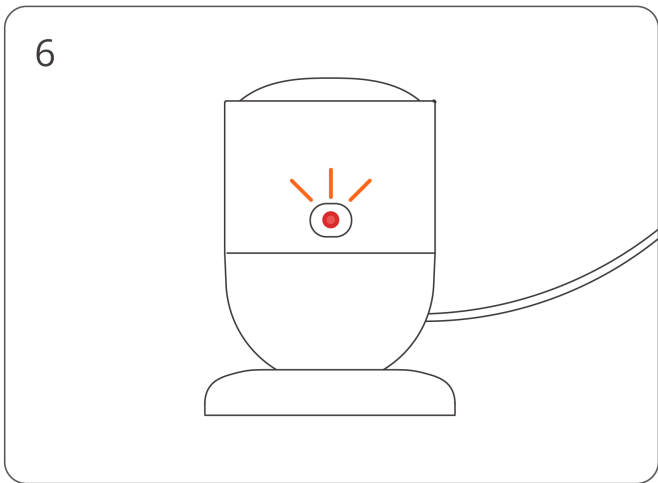


Select "Add Device"

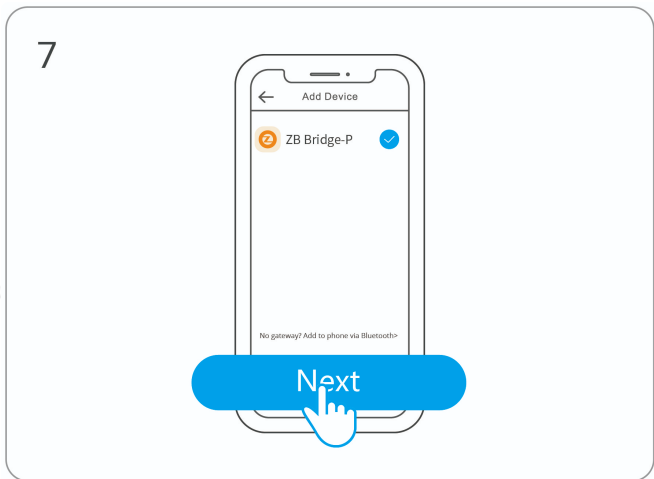


(If the device exits pairing mode)

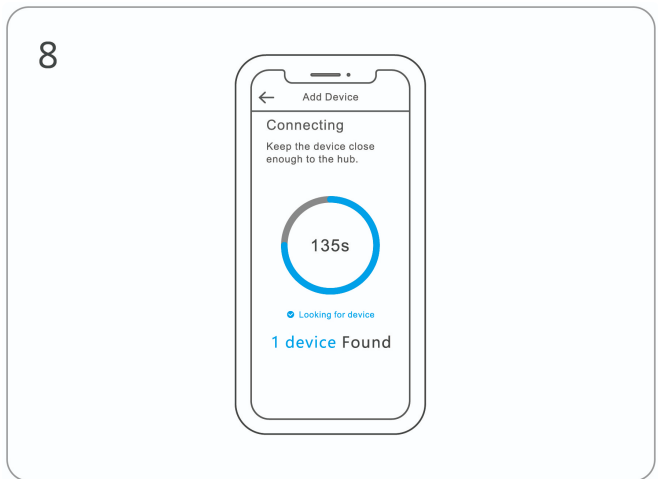
Long press the button for 5 seconds



LED Indicator flashes slowly for 180s



Select a Zigbee gateway



Wait until the device is added

# Compatible Zigbee Gateways

Compatible Gateways	
Recommended SONOFF Gateways	ZBBridge-P, ZBBridge-U, NSPanel Pro, iHost
Other Compatible SONOFF Gateways	ZBDongle-P, ZBDongle-E, Dongle-M, Dongle-PMG24, Dongle-LMG21
Compatible Third-party Gateways	Echo Plus 2nd, Echo 4th Gen, Echo Show 2nd, Aeotec Smart Home Hub V3

- ① On some gateways, the device may be displayed as a motion sensor.
- ② On some gateways, certain device settings (such as Detection Area Setting and Detection Calibration) may be unavailable. Please download the eWeLink App, scan the QR code on the device, and select Bluetooth connection to configure the device.

## Effective Communication Range Verification

Short press the device button at the desired location for installation after adding the device. If the sensor is within the effective communication range of the hub or router on the same Zigbee network, the LED indicator will flash twice.

## Detection Range

Radial detection distance: approximately 4m.

Detection angle: 120°

*\*Note: In narrow indoor environments, microwave reflections may be stronger, which can result in a wider effective detection angle.*

## Installation

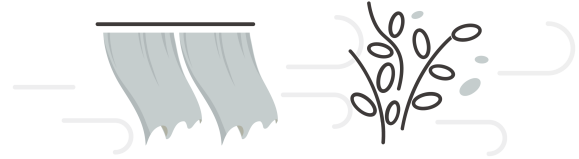
## ① Step One: Choose a Suitable Installation Location

### Common Interference Sources:

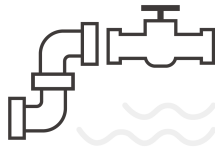
1. **Moving objects:** operating fans, air conditioners, washing machines, swaying curtains or plants, drainage pipes, etc.
2. **Metal objects:** large metal surfaces, mirrors with metallic coatings etc.



running appliances  
(fans, AC units, washing machines)



moving curtains/plants



drainage pipes



large-area metal products  
mirrors (with metallic coatings)

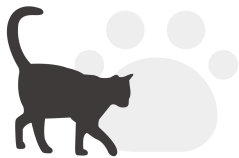
Before finalizing the installation location, **adjust the position of the sensor or the interference sources if necessary.**

The farther an interference source is from the sensor, the less impact it has on detection.

Whenever possible, **keep interference sources outside the detection area.**

For interference sources that remain within the detection area, the device can reduce false detection through Detection Area Setting (②) and Detection Calibration (④).

*\*Note: Interference sources with non-fixed positions, such as pets and robot vacuums, cannot be excluded.*



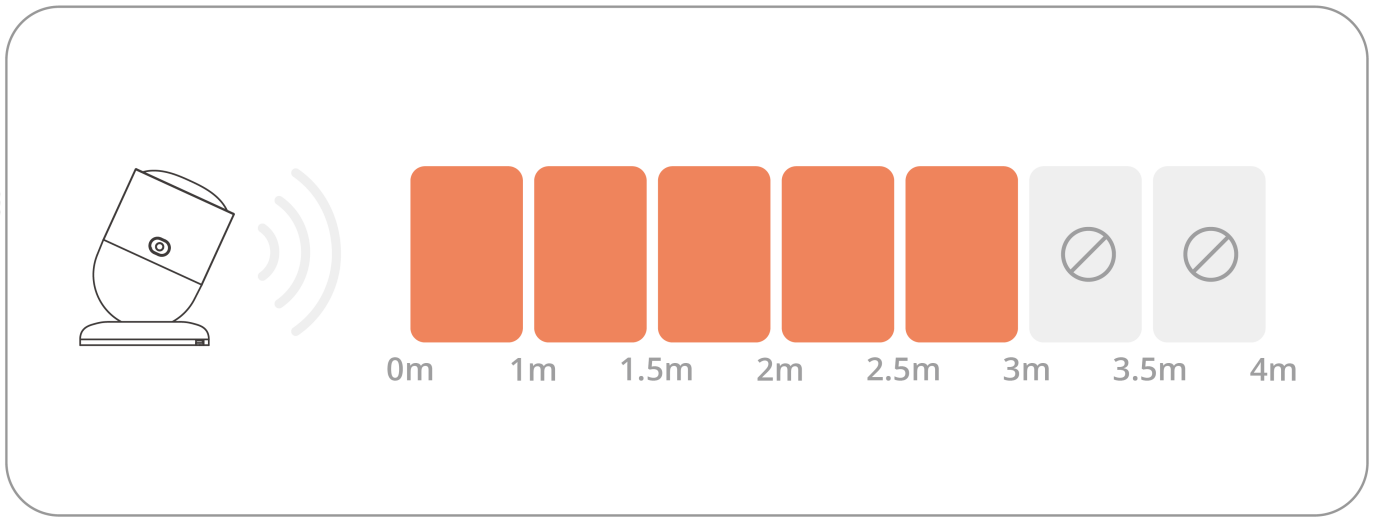
pets



robot vacuums

## ② Step Two: Block Interference Zones

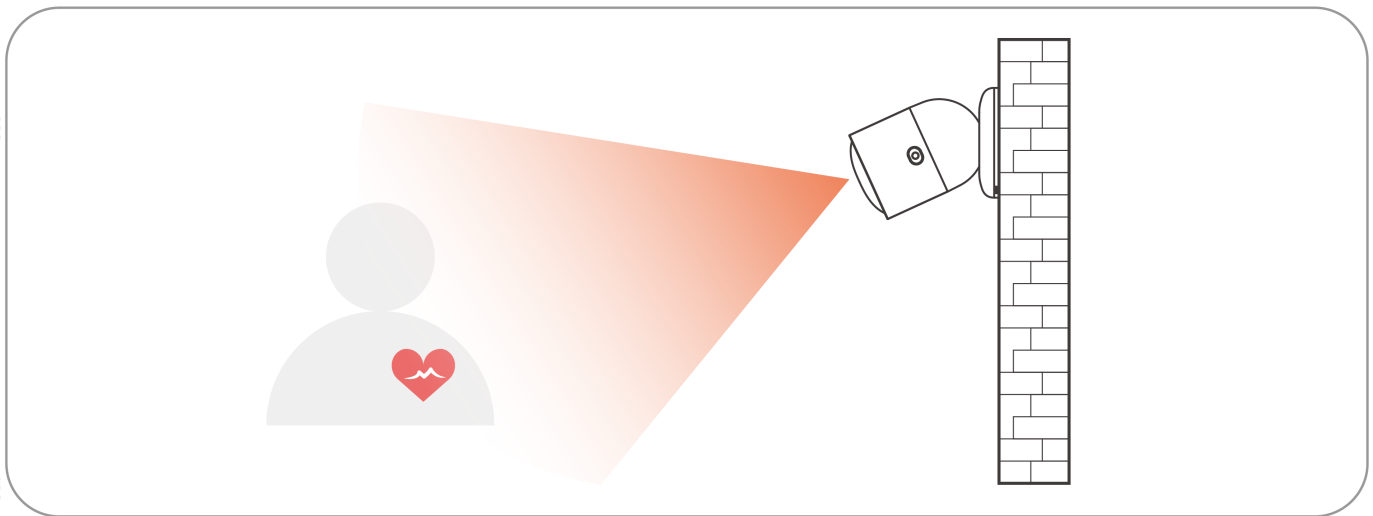
On the device settings page, use **Detection Area Setting** feature to block detection zones that contain interference sources. **Each zone can be enabled or disabled individually.**



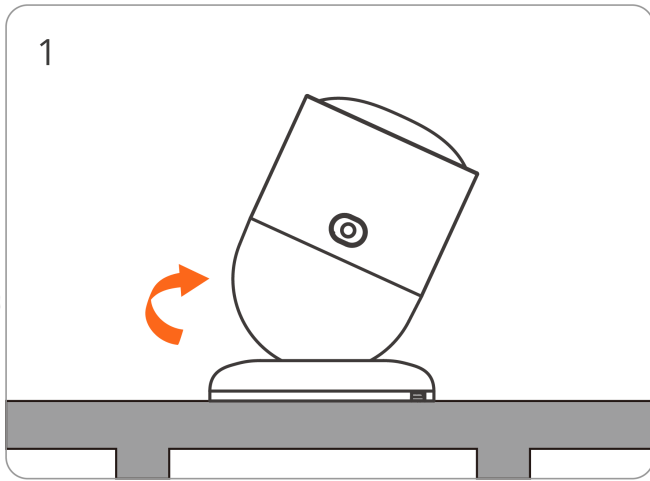
## ③ Step Three: Mount the Device

Install the device at a height of 1–2 meters.

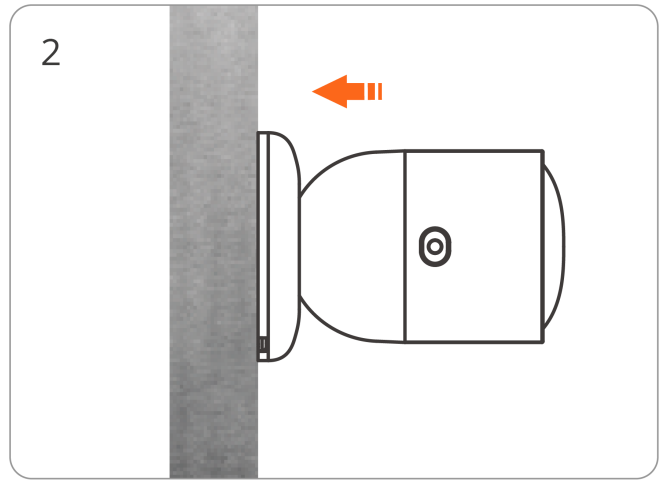
For optimal performance, aim the sensor directly **toward the human chest area.**



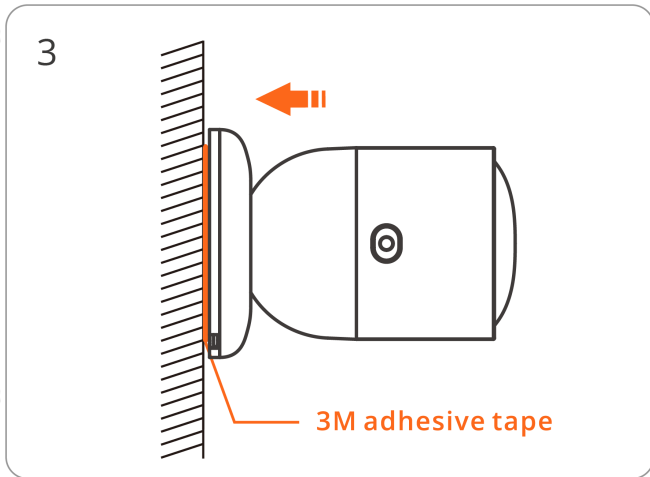
Installation Methods:



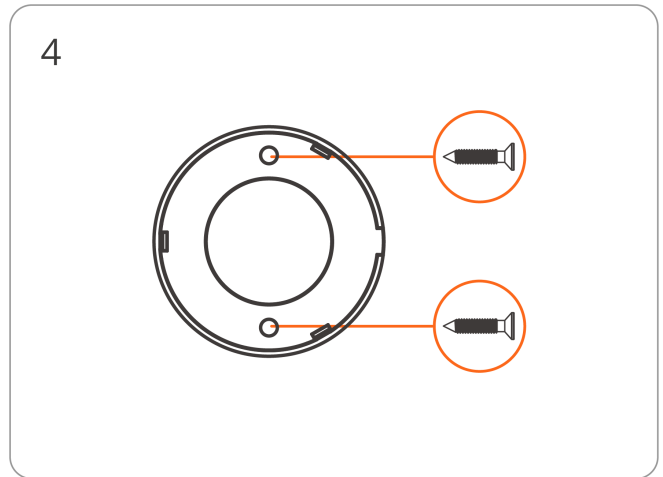
① Desktop placement.



② Attach the base magnetically to a metal surface.

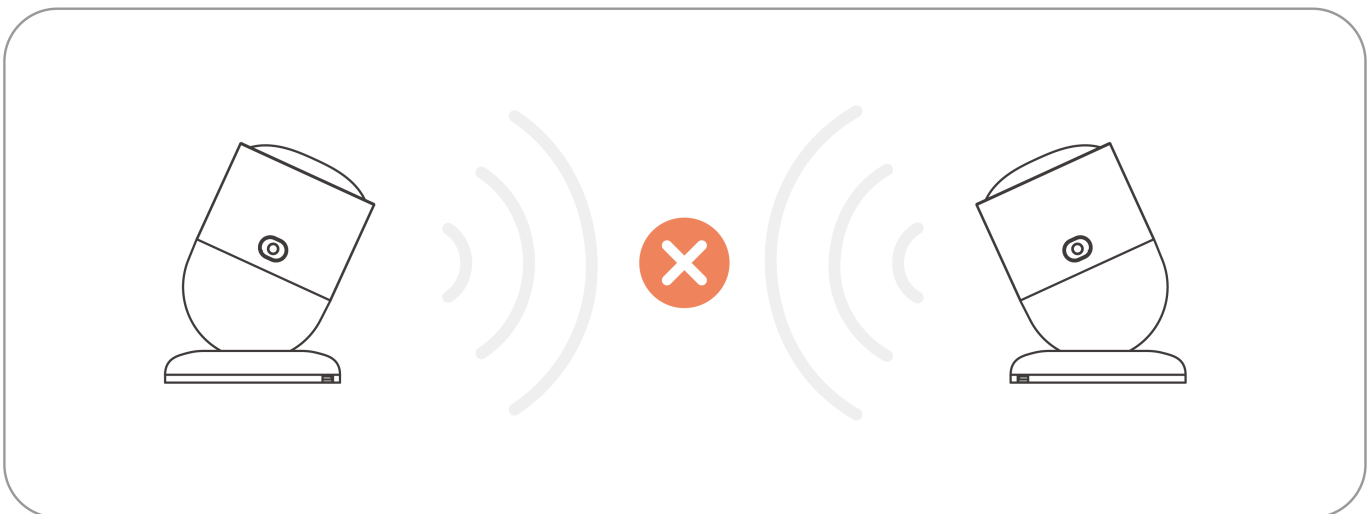


③ Attach the base using 3M adhesive.

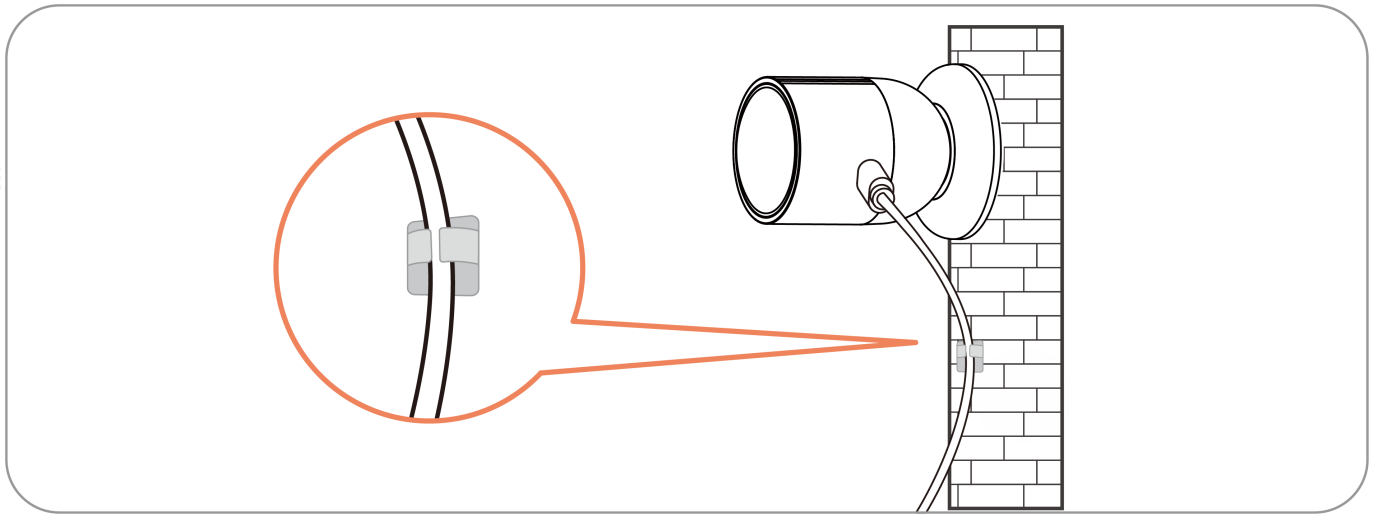


④ Secure the base with screws.

*\*Note: Keep multiple sensors apart and avoid facing them toward each other.*



*\*Note: After mounting the sensor, use the included cable clips to secure the power cable and prevent it from moving.*

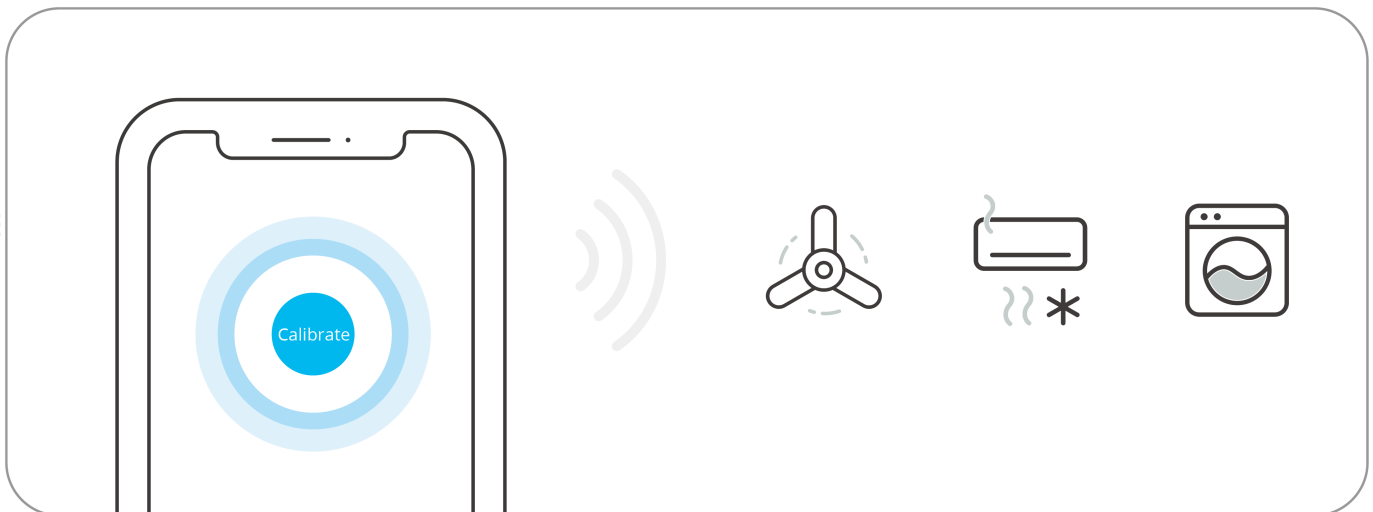


#### ④ Step Four: Eliminate Interference in Unblocked Zones

This feature is mainly used to **reduce interference from appliances that operate continuously in a fixed location**, such as fans, air conditioners, or washing machines.

Leave the detection area and make sure the appliance you want to exclude remains powered on and operating.

Enable **Detection Calibration** feature on the device setting page. The device will automatically self-learn the movement pattern of the interference source and exclude it from detection.



#### Notes for installation:

① If the sensor position or the position of any interference source changes, please reconfigure *Detection Area Setting* and *Detection Calibration* as required.

② Some settings (*Detection Area Setting* and *Detection Calibration*) may not be available on certain third-party Zigbee gateways. For third-party users, please download the eWeLink App, scan the QR code on the device, and follow the in-app instructions to connect and configure.

③ Interference sources with non-fixed positions, such as pets or robot vacuum cleaners, cannot be blocked or excluded.

## Factory Reset

Long press the device button for 10 seconds until the LED indicator quick flashing 5 times. The device will be restored to factory settings.

---

## EU Declaration of Conformity

Hereby, Shenzhen Sonoff Technologies Co., Ltd declares that the radio equipment type SNZB-06P24 is in compliance with Directive 2014/53/EU. The full text of the EU declaration of conformity is available at the following internet address:

<https://sonoff.tech/compliance/>

## For CE frequency

### EU Operating Frequency Range

Zigbee : 2405–2480 MHz

BLE: 2402–2480 MHz

FMCW: 24–24.5GHz

### EU Output Power

Zigbee : ≤10dBm

BLE ≤10dBm

FMCW ≤13.97dBm

Under normal use of condition, this equipment should be kept a separation distance of at least 20 cm between the antenna and the body of the user.

Scatola	Manuale	Borsa	Borsa
PAP 21	PAP 22	CPE 7	LDPE 4
Carta	Carta	Plastica	Plastica
RACCOLTA DIFFERENZIATA			
Verifica le disposizioni del tuo Comune.			
Separa le componenti e conferiscile in modo corretto.			

## WEEE Disposal and Recycling Information



All products bearing this symbol are waste electrical and electronic equipment (WEEE as in directive 2012/19/EU) which should not be mixed with unsorted household waste. Instead, you should protect human health and the environment by handing over your waste equipment to a designated collection point for the recycling of waste electrical and electronic equipment, appointed by the government or local authorities. Correct disposal and recycling will help prevent potential negative consequences to the environment and human health. Please contact the installer or local authorities for more information about the location as well as terms and conditions of such collection points.



### WARNING

1. This product is not a toy and not intended for use by children. For adult use only.
2. The appliance is suitable for moderate climates only.
3. The ventilation must not be impaired by covering the appliance with items such as newspapers, table cloths, curtains, etc.
4. Naked flame sources, such as candles, must not be placed on the appliance.

# FCC compliance statement

Responsible Party Name: SONOFF TECHNOLOGY LLC

Address: 14777 NE 40th St, Suite 201 Bellevue, WA 98007

Email Address: usres@itead.cc

FCC ID: 2APN5-SNZB06P24

1.This device complies with part 15 of the FCC Rules. Operation is subject to the following two conditions:

- (1) This device may not cause harmful interference, and
- (2) This device must accept any interference received, including interference that may cause undesired operation.

2.Changes or modifications not expressly approved by the party responsible for compliance could void the user's authority to operate the equipment.

Note: This equipment has been tested and found to comply with the limits for a Class B digital device, pursuant to part 15 of the FCC Rules. These limits are designed to provide reasonable protection against harmful interference in a residential installation. This equipment generates, uses and can radiate radio frequency energy and, if not installed and used in accordance with the instructions, may cause harmful interference to radio communications. However, there is no guarantee that interference will not occur in a particular installation. If this equipment does cause harmful interference to radio or television reception, which can be determined by turning the equipment off and on, the user is encouraged to try to correct the interference by one or more of the following measures:

- Reorient or relocate the receiving antenna.
- Increase the separation between the equipment and receiver.
- Connect the equipment into an outlet on a circuit different from that to which the receiver is connected.
- Consult the dealer or an experienced radio/TV technician for help.

FCC Radiation Exposure statement:

This equipment complies with FCC radiation exposure limits set forth for an uncontrolled environment.

This equipment should be installed and operated with minimum distance of 20 cm between the radiator and your body.

This transmitter must not be co-located or operating in conjunction with any other antenna or transmitter.

# SONOFF

**Manufacturer: Shenzhen Sonoff Technologies Co., Ltd.**

Address: 3F & 6F, Bldg A, No. 663, Bulong Rd, Shenzhen, Guangdong, 518000, China

Service email: support@itead.cc      Website: sonoff.tech

Made in China



Points de collecte sur [www.quefairedemesdechets.fr](http://www.quefairedemesdechets.fr)  
Privilégiez la réparation ou le don de votre appareil !



