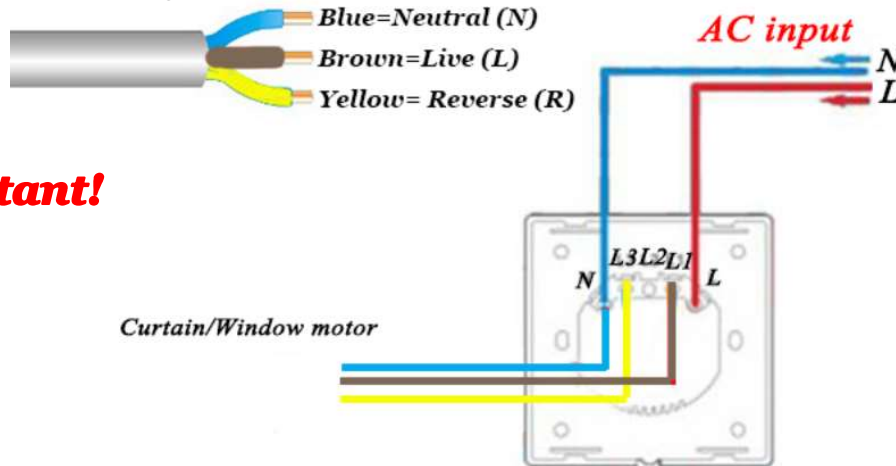


# User manual for motorized window opener

## 1. Product parameters:

Model number	Power voltage	Current(A)	Push/Pull force	Working speed
GM-220V	220V	0.3	400N	9mm/s

## 2. Working mode and Wire diagram:



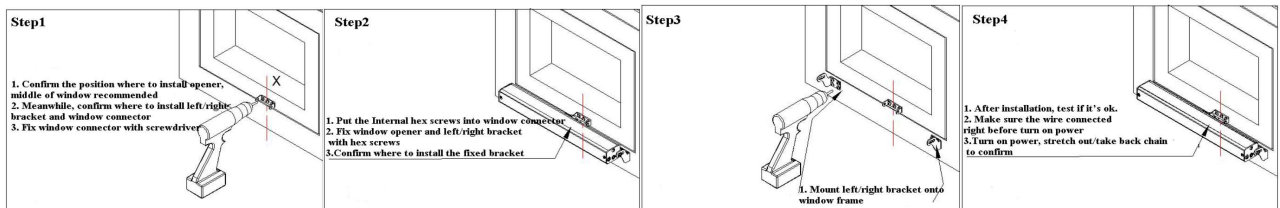
**Important!**

**Note: The motor blue wire is Neutral line. Motor blue wire to Switch N port always. Brown for L1 and Yellow for L3, or connect Brown to L3 and Yellow to L1 to change open direction.**

## Package include:

1-Window opener, 2 -2\*Six angle screws, 3-Bracket, 4-Cap nut, 5- window connector,6-Internal hex screws,7-8\*screws

## 1. How to install it



- Bracket Installation: Measure the width of the window frame and install the window opener in the middle of the window frame. Confirm where to install the left/right bracket and window connector.
- Install the left/right bracket and make sure it's ok.
- Motor's chain face down, put the motor into the bracket. Motor rotates 90 degree as the arrow diagram. Make motor's chain face the window. Motor installation finish.
- Measure the width of the window sash and install the window connector in the middle of window sash. Fix the connector on the window.

## Attention:

- The maximum push strength is 400N. Don't install it with overweight window.
- Please install this window opener inside of room, better prevent from being directly exposed to rain or sunshine.
- Make sure the opener is parallelized with window.
- Make sure the chain is completely taken back when the window is closed.

## How to connect switch to Tuya or Smart Life APP

- Connect motor to switch same as wire diagram shown above. Then turn on the switch, make sure motor works properly first. If you have any question, contact seller first!
- Download Tuya smart or Smart life APP, register an account. Then click add devices, then choose Electrical-Switch (Wi-Fi). Connect phone to 2.4G wifi. If your wifi is 2.4G and 5G mixed, separate it first. Then click next.
- Press and hold the up button for 20s, release it until the indicator starts flashing quickly.
- Then click confirm button in APP page. Wait until it says connected successfully.
- After connection, you can control window on APP, you can change open angle by setting the trip time in APP page.

**Any other question, feel free to contact seller. Best Regards.**